



Vehicle

System

Repair Group

Previous Topic

Next Topic

Technical  
Bulletins

Wiring Diagrams

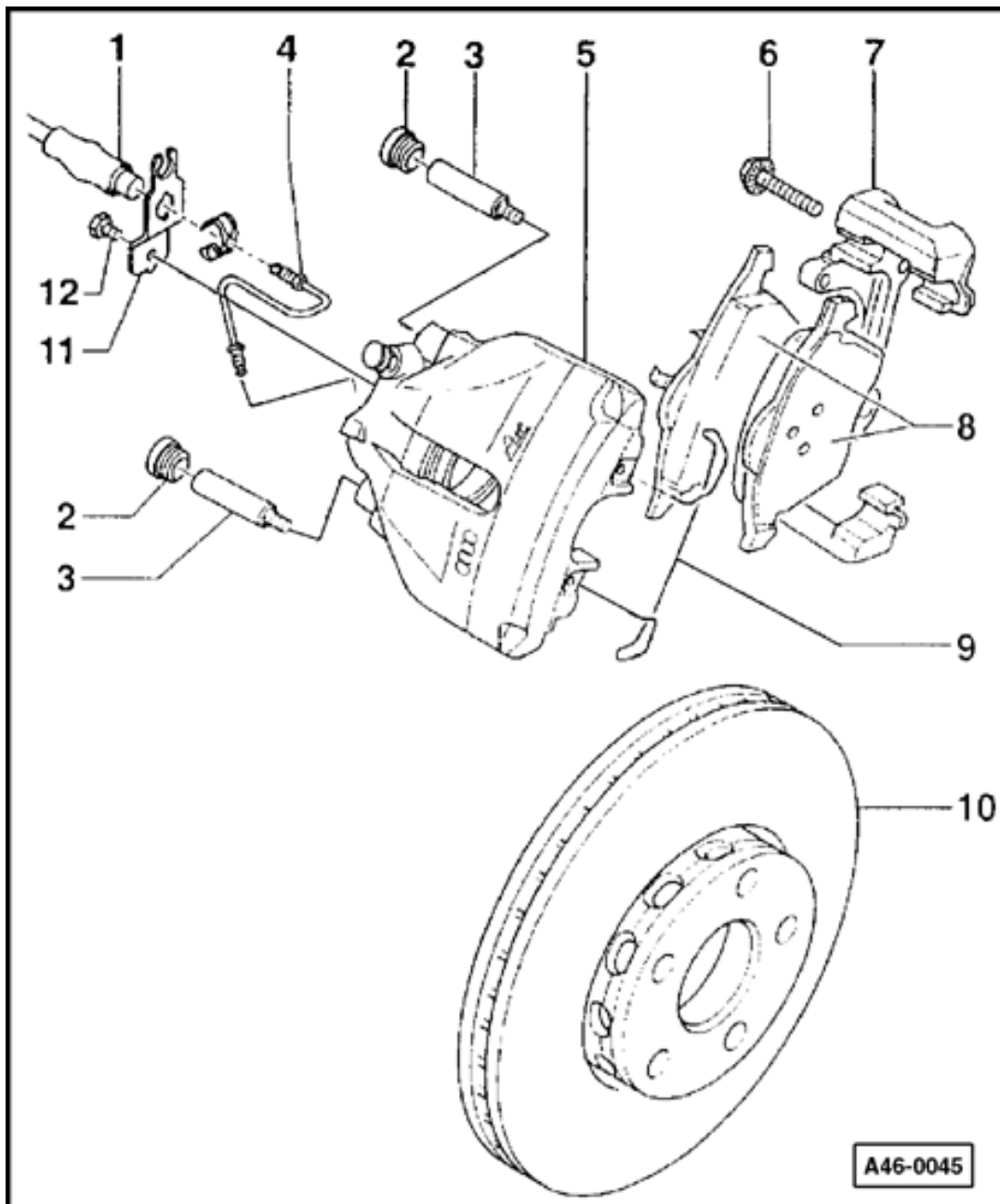
Warnings &  
Cautions

Print

Search

Advanced  
Search

eBahn®  
Version: 2.5r01sp0003

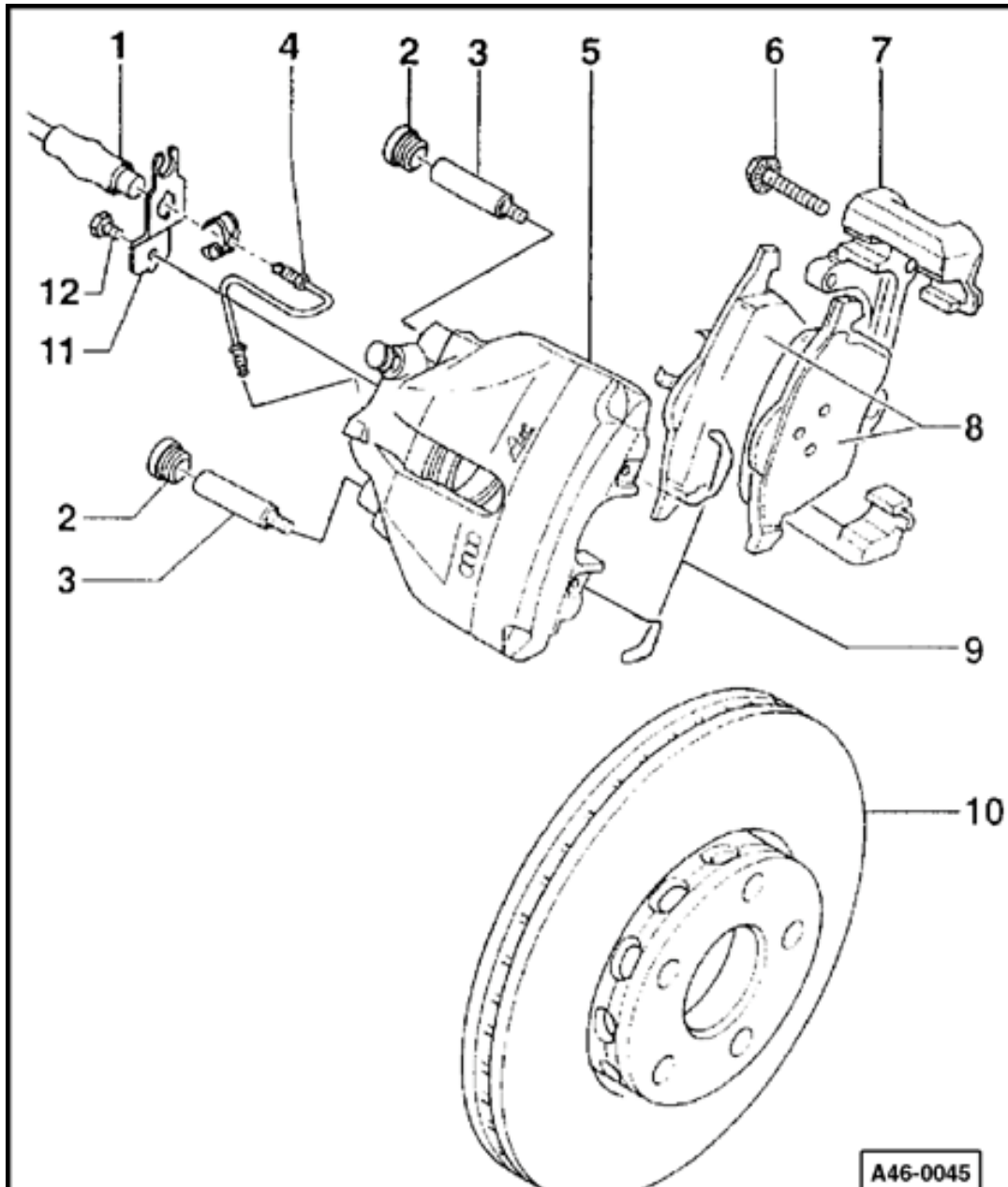


## Front brakes (FN-3), servicing

### Front brakes, servicing

#### Note:

- ◆ *Install complete repair kit.*
- ◆ *After replacing brake pads and before moving vehicle, depress brake pedal several times firmly to properly seat brake pads in their normal operating position.*
- ◆ *When siphoning brake fluid, always use a bleeder bottle that is used exclusively for brake fluid. Brake fluid is poisonous. NEVER siphon brake fluid with your mouth!*
- ◆ *Wheel bolt tightening torque: 120 Nm*
- ◆ *Check brake caliper for freedom of movement by sliding to side.*



**1 - Brake hose**

- ◆ Do not disconnect when removing brake pads

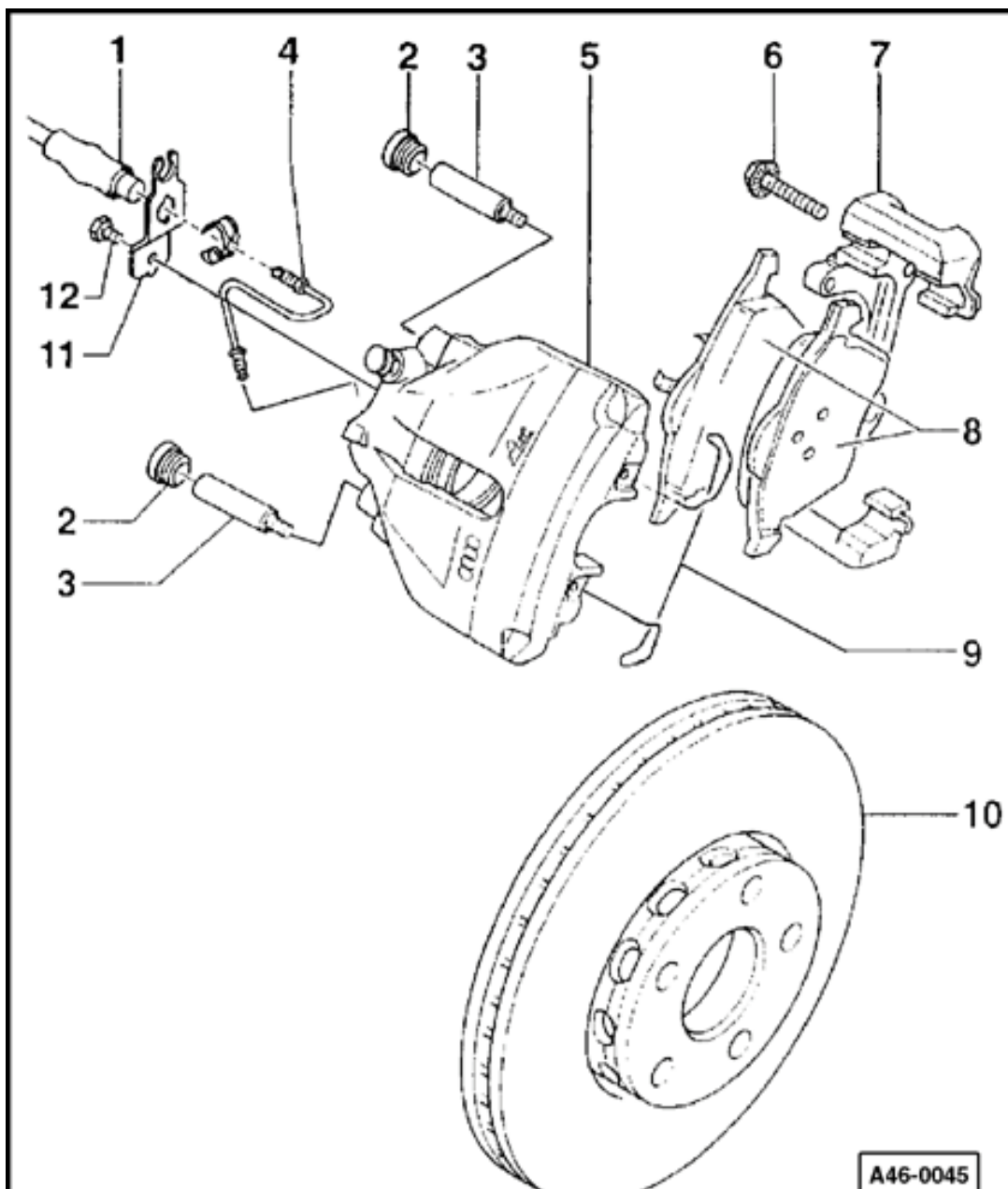
**2 - Protective cap**

- ◆ Remove

**3 - Guide pins, 25 Nm**

**4 - Brake line, 15 Nm**

- ◆ Install in brake caliper housing
- ◆ Attach to brake hose, counter hold on brake hose hex when attaching
- ◆ Make sure tabs are properly seated in retainer grooves



### 5 - Brake caliper housing

- Check that the brake calipers moves freely by moving it from side to side

### 6 - Ribbed bolt, tightening torques

#### **CAUTION!**

**Observe different tightening torques.**

- ◆ M12 x 1.5 x 35, 130 Nm
- ◆ M14 x 1.5 x 35, 200 Nm
- ◆ Clean ribs if reusing

### 7 - Brake carrier

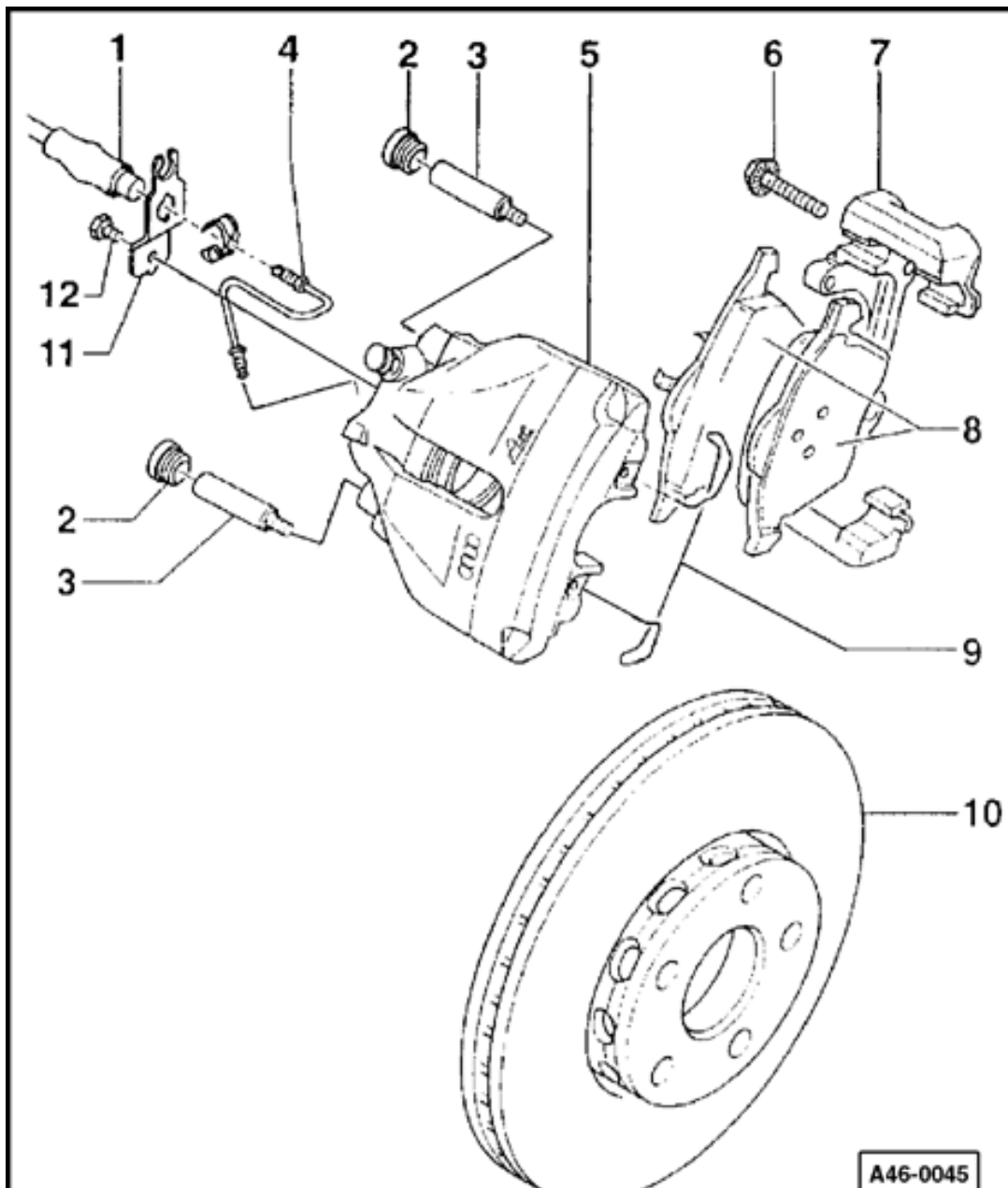
- ◆ Bolt to wheel bearing housing



- ◆ Always replace on both sides of the car

⇒ [Repair Manual, Brake System, Repair Group 00; Technical data](#)

- ◆ Removing and installing ⇒ [Page 46-7](#)



## 8 - Brake pads

### **Note:**

*Inner pad (with spring) is marked with an arrow. The arrow must point in the direction of forward rotation of the brake disc when installed. Noise may result from incorrect installation.*

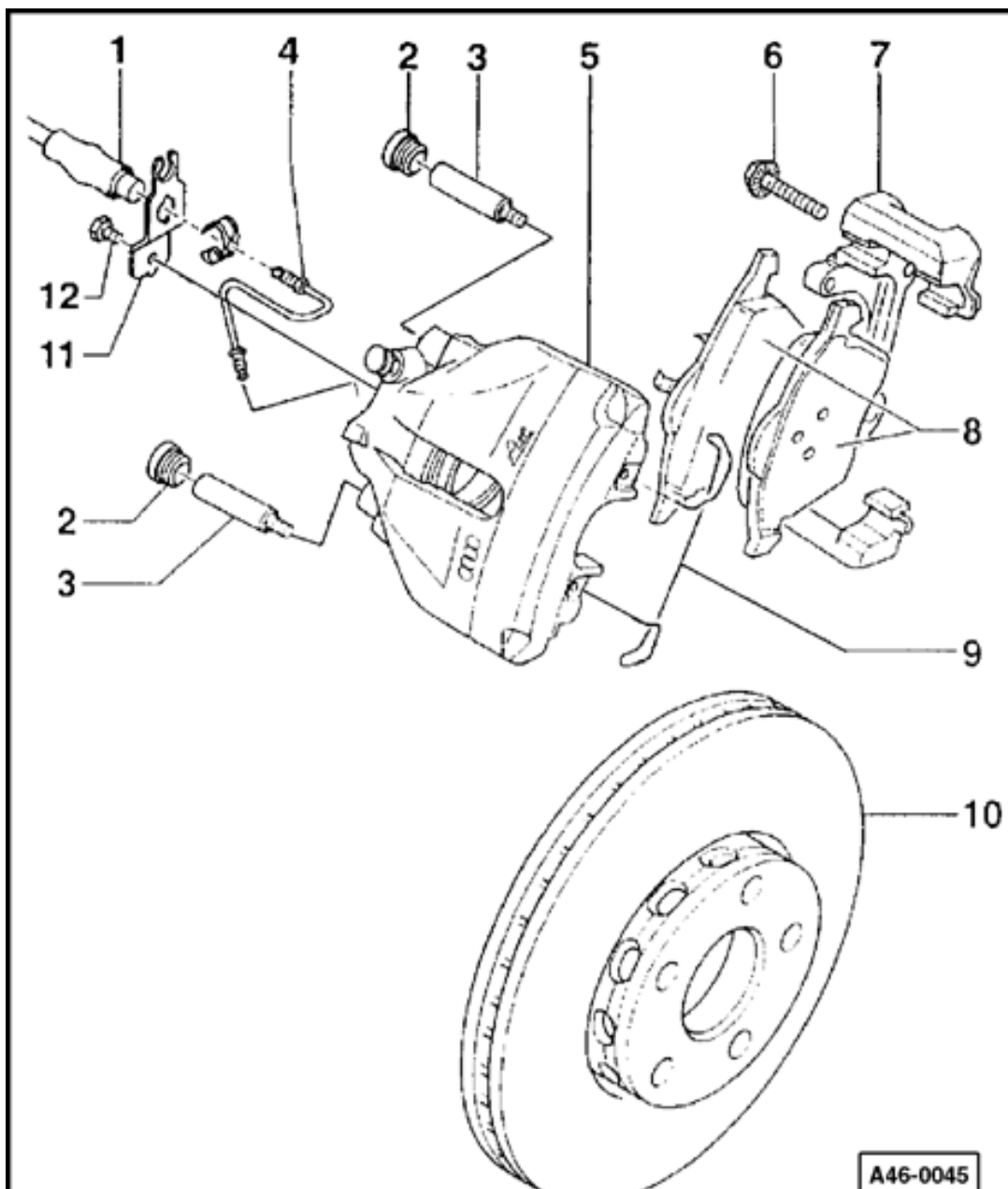
- ◆ Remove adhesive foil from backing plates on outer brake pads before installing
- ◆ Both pairs of brake pads on front axle must always be replaced together

### **Note:**

*Always clean brake caliper thoroughly before installing new brake pads (must be free of grease). Be especially*



*careful to remove any residual adhesive foil on the surface of the outer brake pads.*

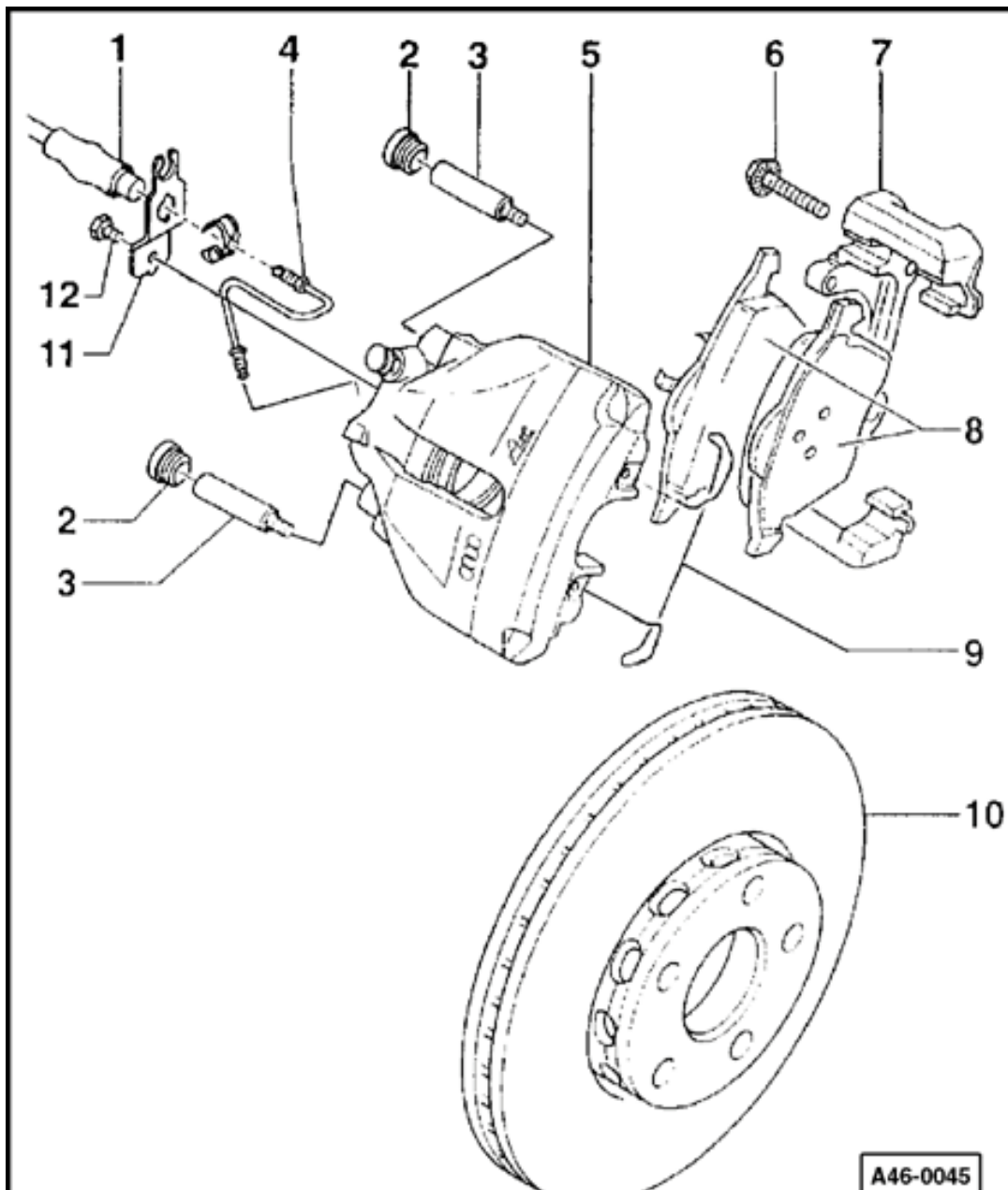


### 9 - Retaining spring

- ◆ Insert in both holes of brake caliper housing

#### **Note:**

*Retaining spring must be pressed under brake carrier after it is inserted in both holes. If the spring is improperly installed, the brake caliper cannot adjust to compensate for wear on the outer brake pad. This will cause the brake pedal travel to increase.*



### 10 - Brake disc

- ◆ Pads on both sides of axle must always be replaced together
- ◆ Remove brake caliper before removing

⇒ [Repair Manual, Brake System, Repair Group 00; Technical data](#)

- ◆ Pads on both sides of axle must always be replaced together
- ◆ Brake pads are different; inner pad has retaining spring

### 11 - Bracket

- ◆ Bolt to brake caliper housing

### 12 - Hex bolt, 10 Nm



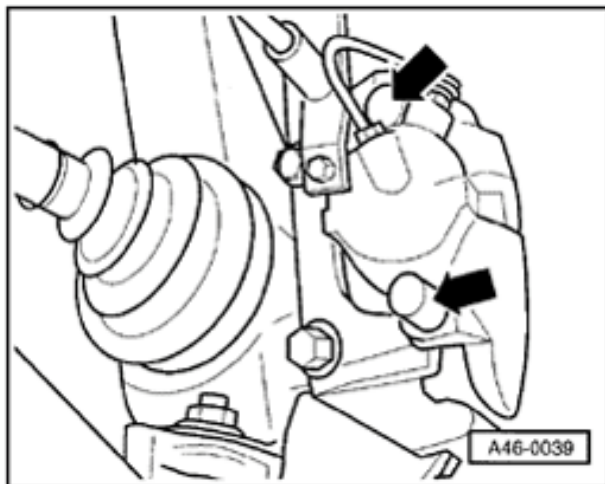


## Brake pads, removing and installing

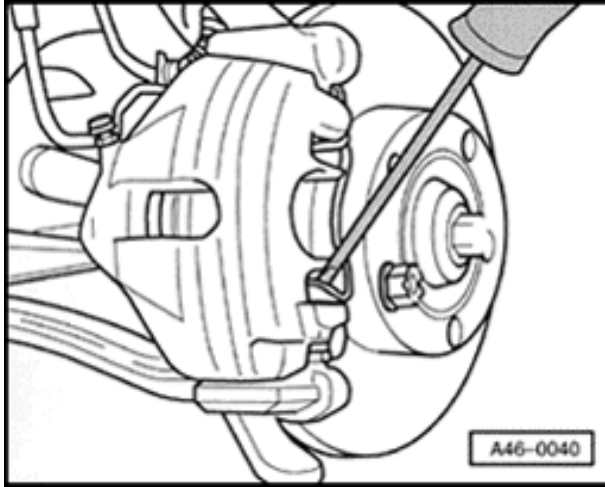
### Removing

#### **Note:**

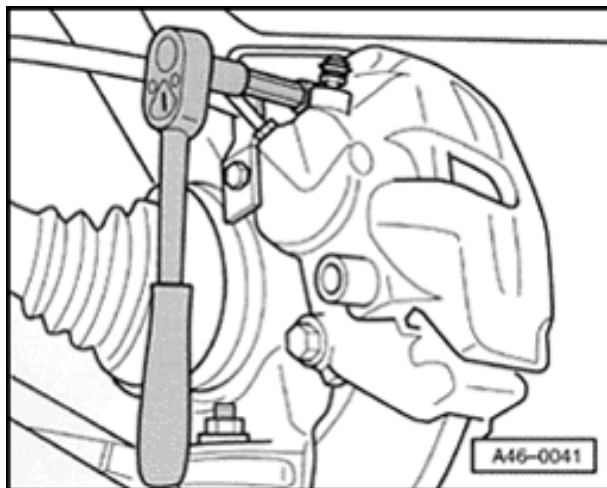
*If re-using brake pads, mark them so they can be installed in their original positions to prevent uneven braking.*



- Remove protective caps.



- ✦ - Using screwdriver, pry off brake pad retaining spring from brake caliper housing and remove.

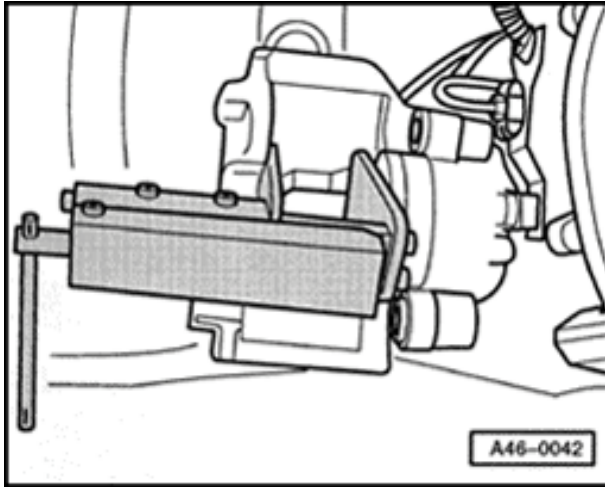


- Remove both guide pins from brake caliper.
- Remove brake caliper housing and support so that the weight of the brake caliper does not burden or damage the brake hose.
- Remove brake pads from brake caliper housing or from brake carrier.

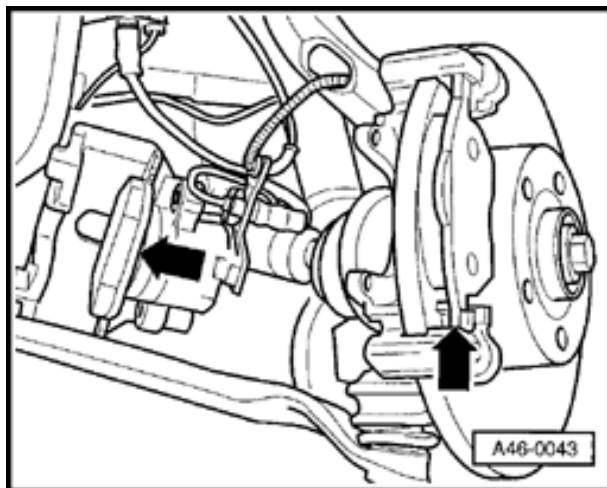
### Installing

#### **Note:**

*Press piston back into caliper housing using resetting tool before inserting new brake pads. Before pushing back the piston, draw off brake fluid out of the brake fluid reservoir with a bleeder bottle. Otherwise, especially if reservoir has been topped off, fluid will overflow and cause damage.*



- ▲ - Press piston back.



- Insert brake pad with retaining spring in brake caliper housing.

**Note:**

*Inner pad (with spring) is marked with an arrow. The arrow must point in the direction of forward rotation of the brake disc when installed. Noise may result from incorrect installation.*

- Remove protective foil on backing plate of outer brake pad.
- Install outer brake pad on brake carrier.
- Install brake caliper housing in brake carrier using both guide pins (25 Nm).
- Install both protective caps.
- Install retaining spring in brake caliper housing.

**Note:**

*After installing brake pads and before moving vehicle, depress brake pedal several times firmly to properly seat brake pads in their normal operating position.*

- Install wheels

Tightening torque 120 Nm

- Check brake fluid level and top off, if necessary.



Vehicle

System

Repair Group

Previous Topic

Next Topic

Technical  
Bulletins

Wiring Diagrams

Warnings &  
Cautions

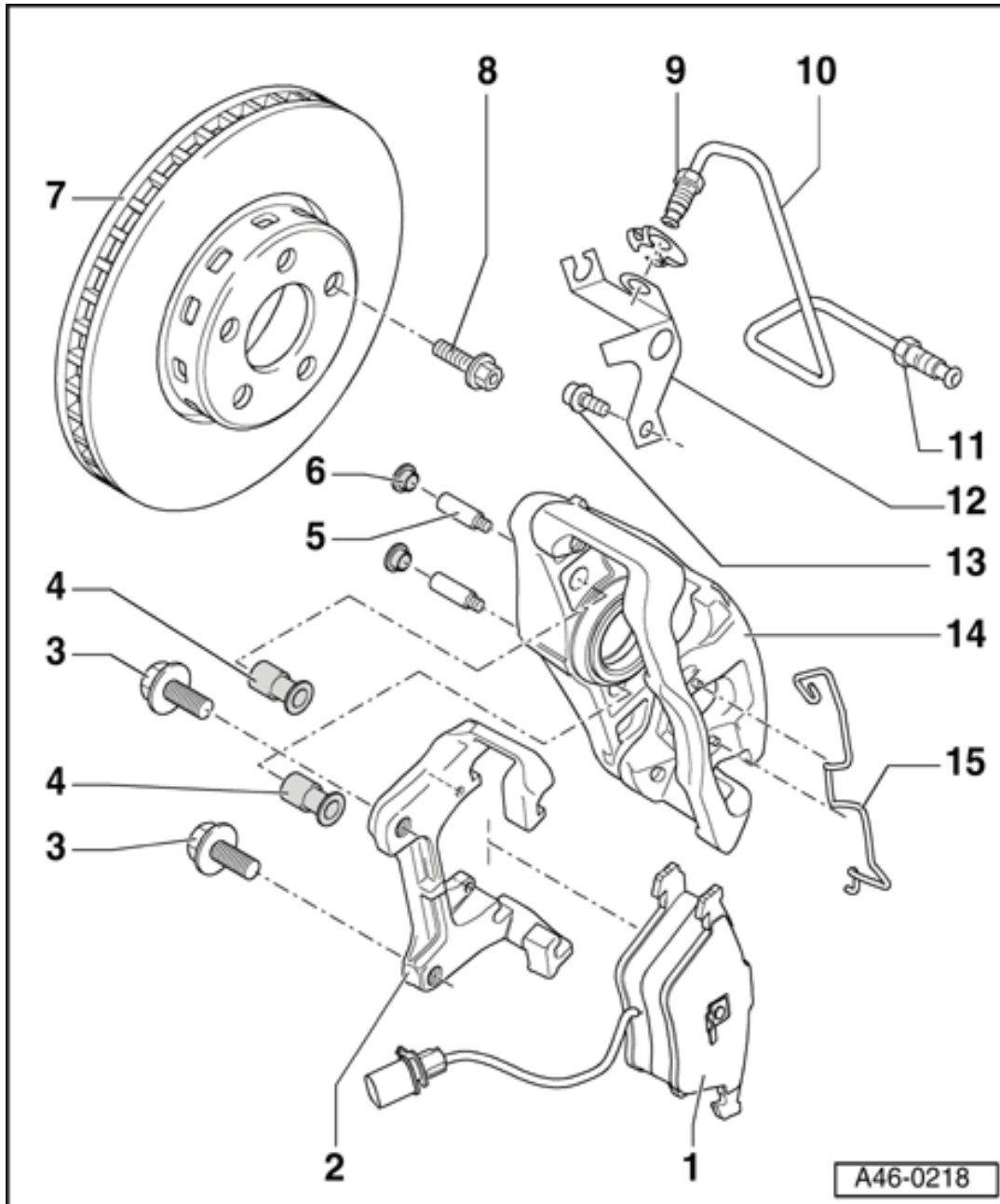
Print



Search

Advanced  
Search

eBahn®  
Version: 2.5r01sp0003

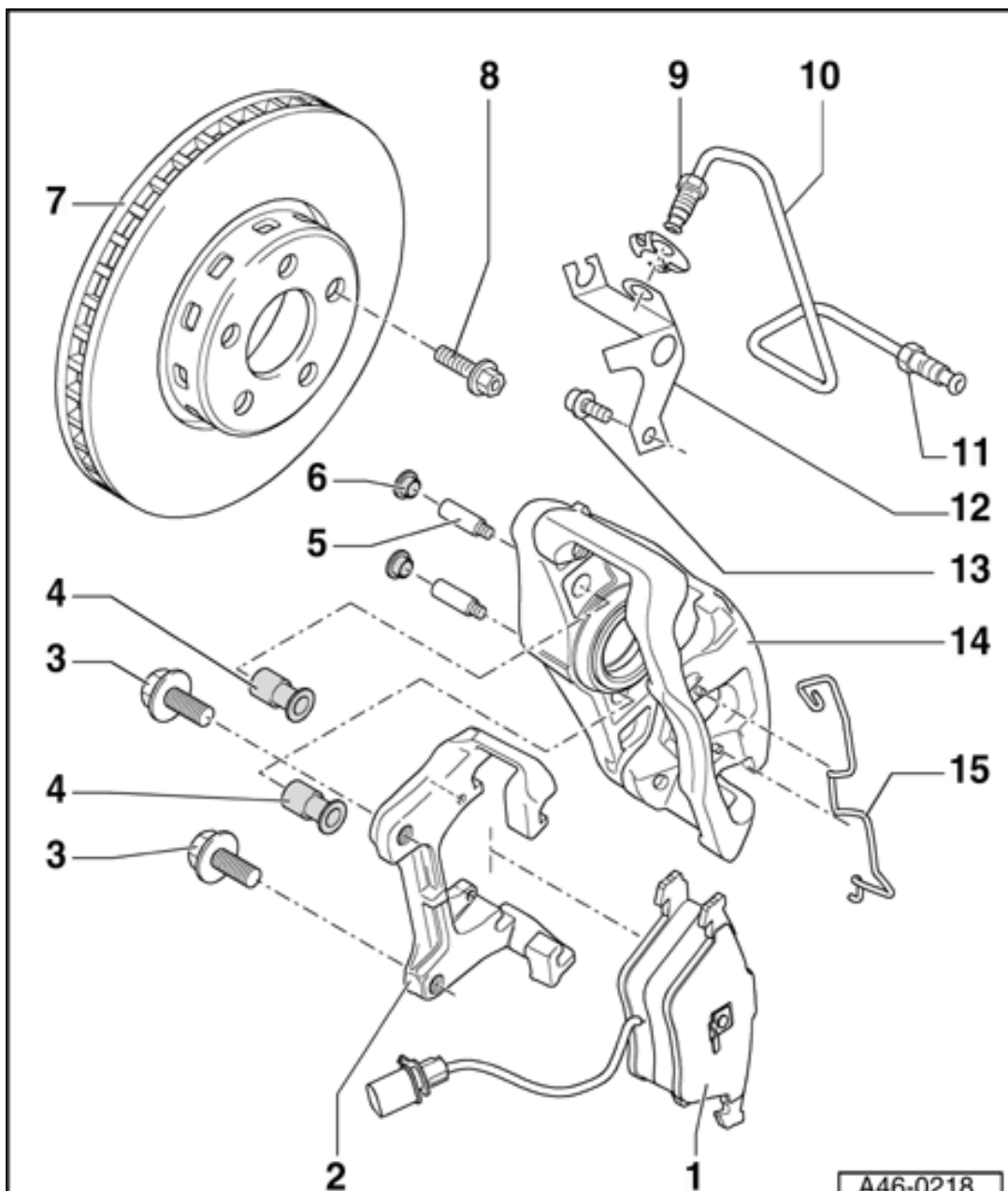


## Front brakes FNR-G60

### Front brakes, servicing

#### Note:

- ◆ Always install the complete repair kit.
- ◆ After replacing brake pads and before moving vehicle, depress brake pedal several times firmly to properly seat brake pads in their normal operating position.
- ◆ When siphoning brake fluid, always use a bleeder bottle that is used exclusively for brake fluid. Brake fluid is poisonous. NEVER siphon brake fluid with your mouth!



◆ The tightening torque of the brake lines is 15 Nm.

◆ Check that the brake caliper moves freely by moving it from side to side.

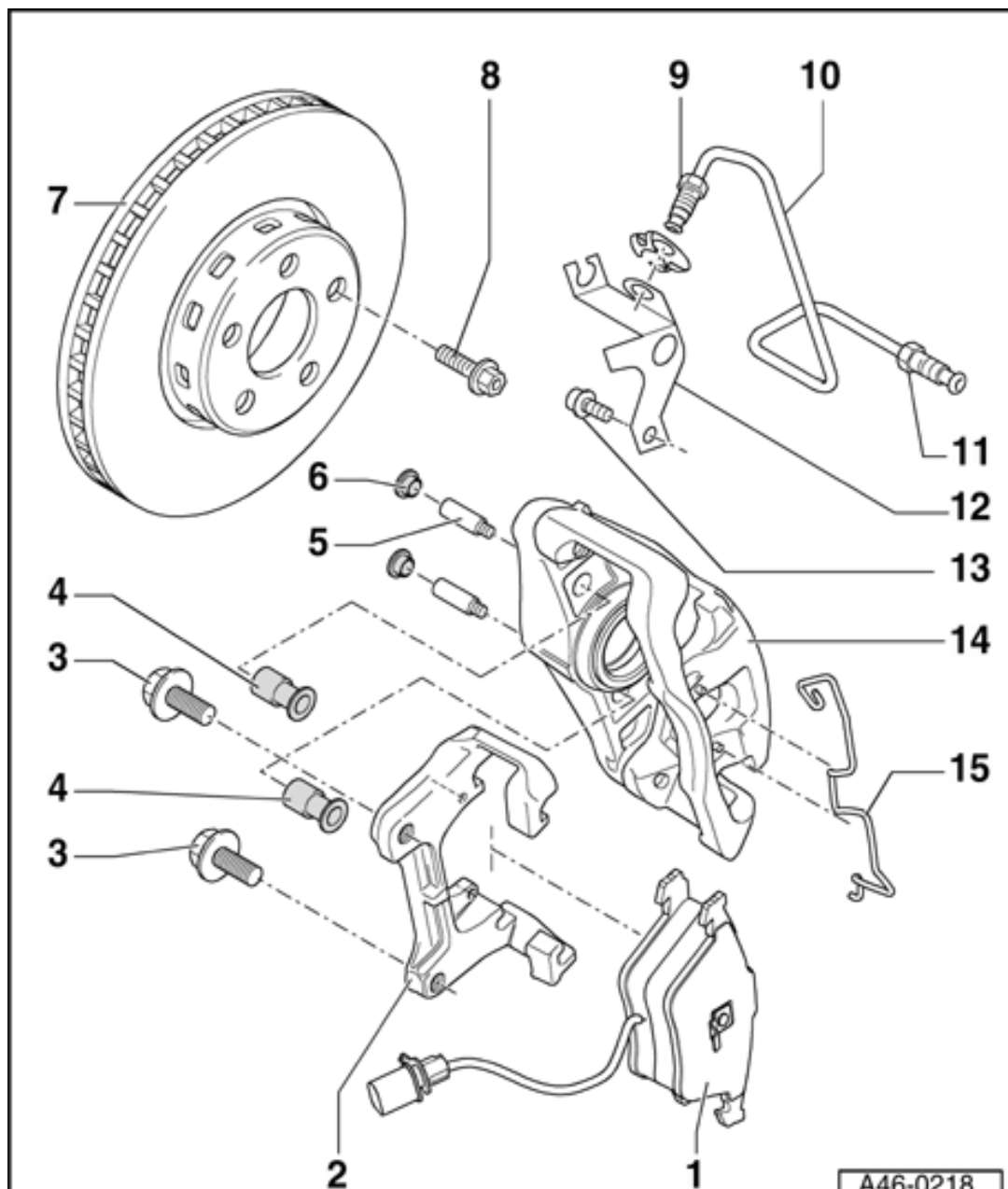
### 1 - Brake pads

#### Note:

*The inner pad (with spring) has a cable for wear indicator.*

◆ The outer brake pads are provided with an adhesive sheet on the backing plate of pad. Remove the protective sheet before inserting pads.





◆ Different versions see  
Parts Catalog

◆ If worn, always replace  
on both sides of the car

◆ Removing and installing  
⇒ [Page 46-7](#)

**Note:**

*Always clean brake caliper  
thoroughly before installing  
new brake pads (must be free  
of grease). Be especially  
careful to remove any  
residual adhesive foil on the  
surface of the outer brake  
pads.*

**2 - Brake carrier**

◆ Bolt to wheel  
bearing housing

**3 - Ribbed bolt, 200 Nm**

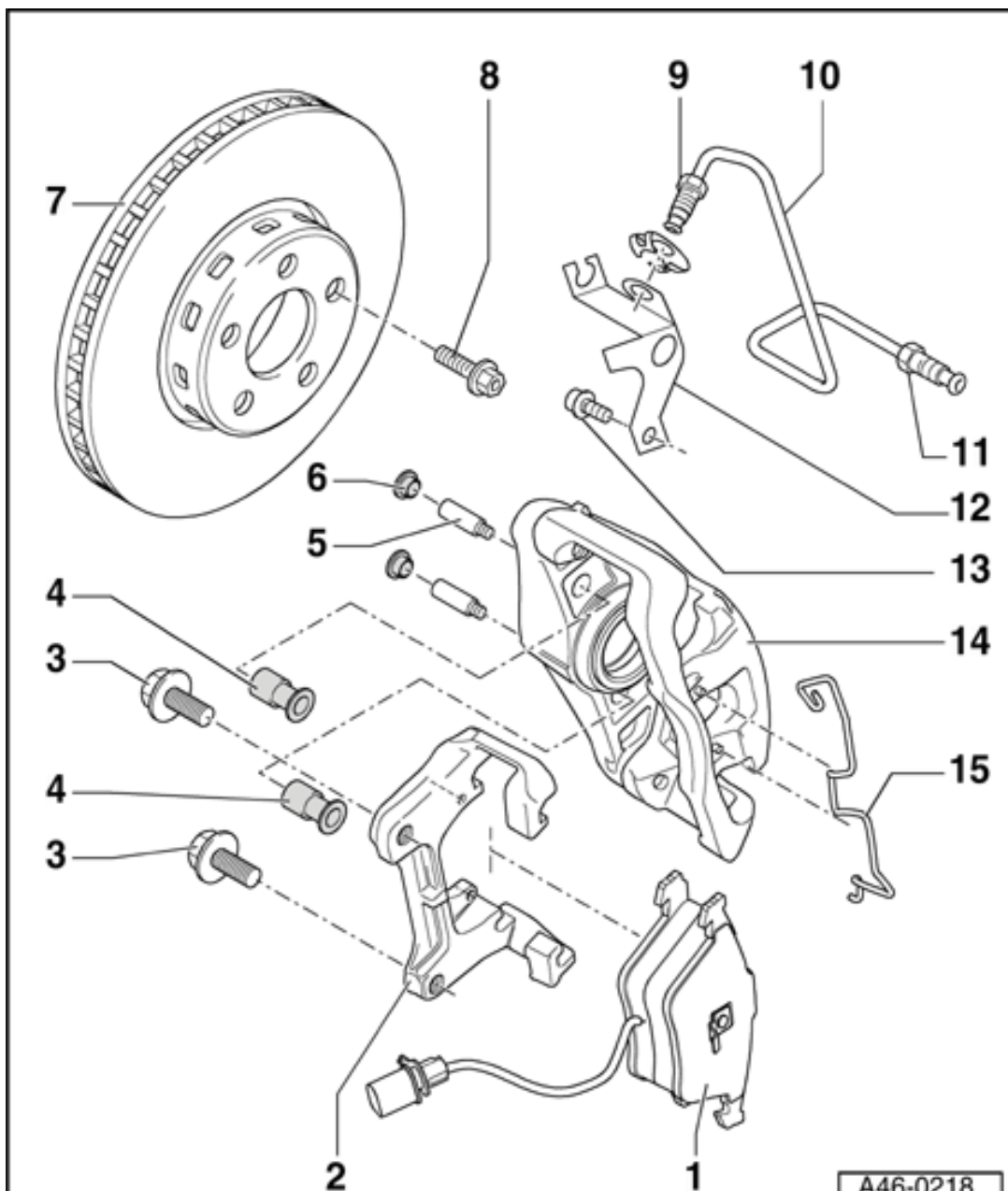
◆ Clean ribbing if  
reusing

2

1

A46-0218

◆ M14 x 1.5 x  
38



#### 4 - Bushing

- ◆ Insert into brake caliper housing

#### 5 - Guide pin, 30 Nm

#### 6 - Trim cap

- ◆ Remove
- ◆ Attach cable for wear indicator

#### 7 - Brake disc

- ◆ If worn, always replace on both sides of the car
- ◆ Remove brake caliper prior to removing
- ◆ Lubricate contact surfaces between brake disc and wheel hub with polyurea grease G 052 142 A2.

⇒ [Repair Manual, Brake System, Repair Group 00; Technical data](#)

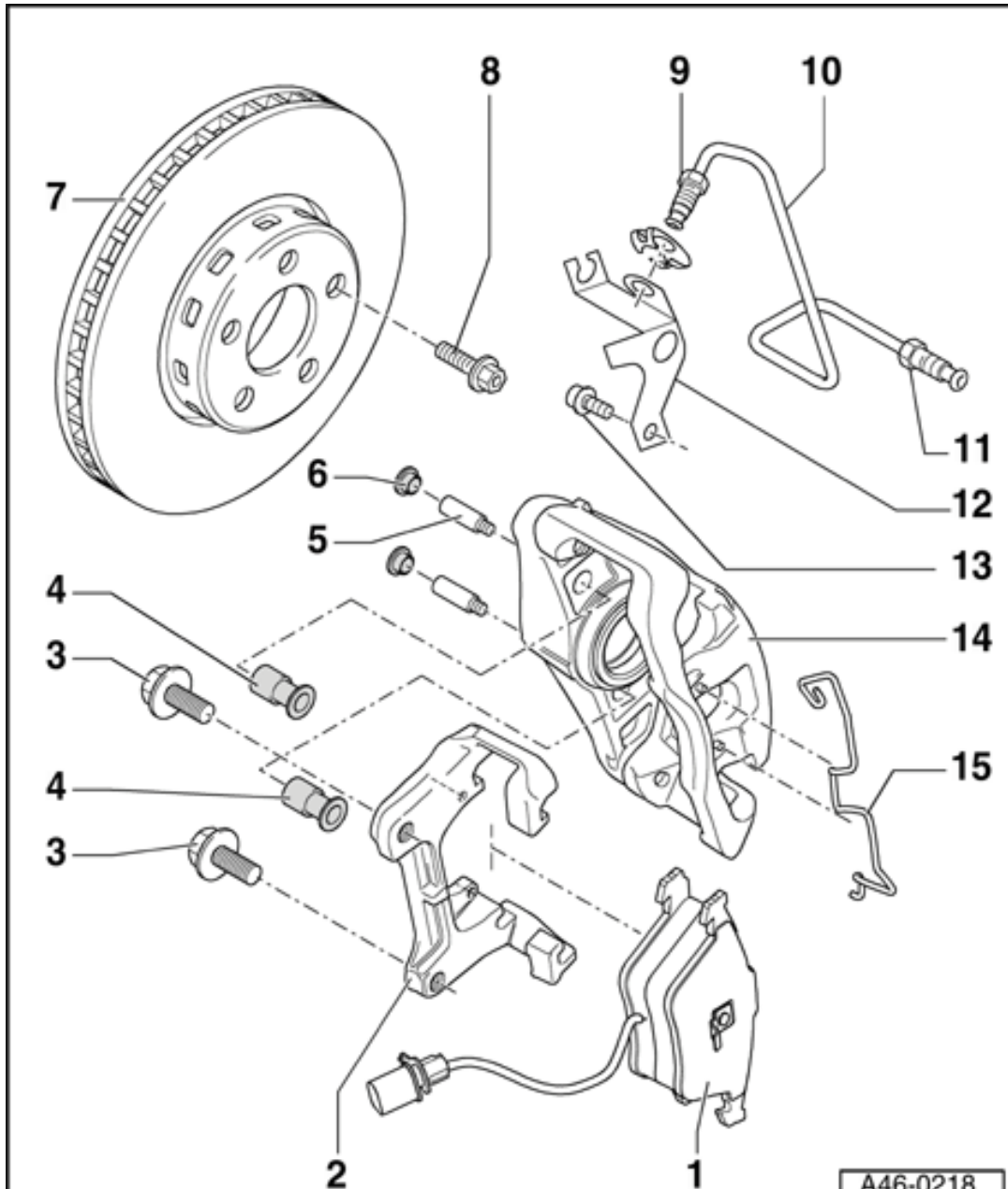
2

1

A46-0218

## 8 - Wheel bolts

- ◆ Tightening torque  
120 Nm



**9 - Brake line connection to brake hose, 15 Nm**

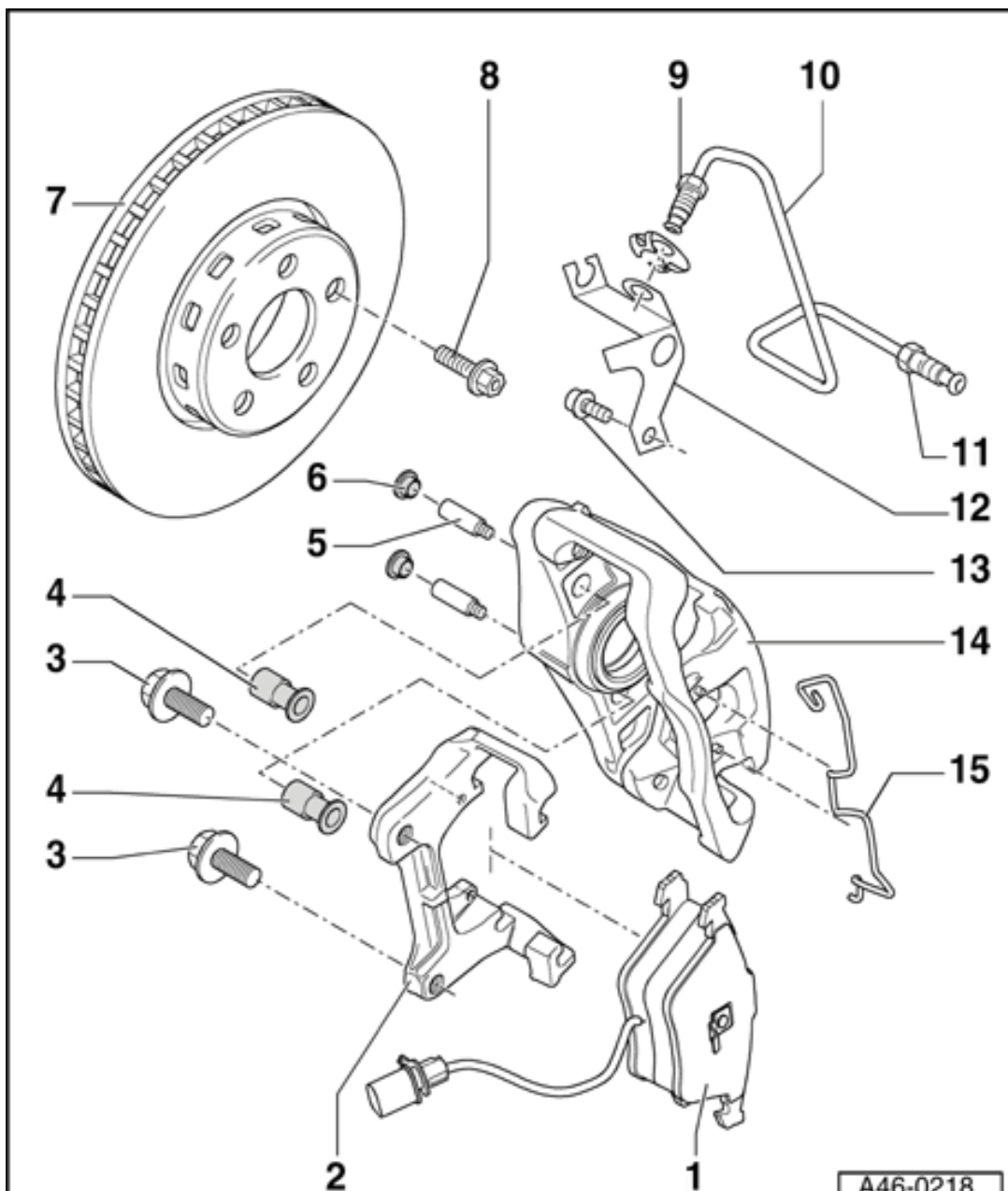
**10 - Brake line**

- ◆ Install in brake caliper housing
- ◆ Attach to brake hose, counter hold on brake hose hex when attaching
- ◆ Hose must be attached without twisting
- ◆ Make sure tabs are properly seated in retainer grooves

**11 - Brake line connection to brake caliper, 17 Nm**

**12 - Bracket**

- ◆ Bolt to brake caliper housing
- ◆ Attach brake line



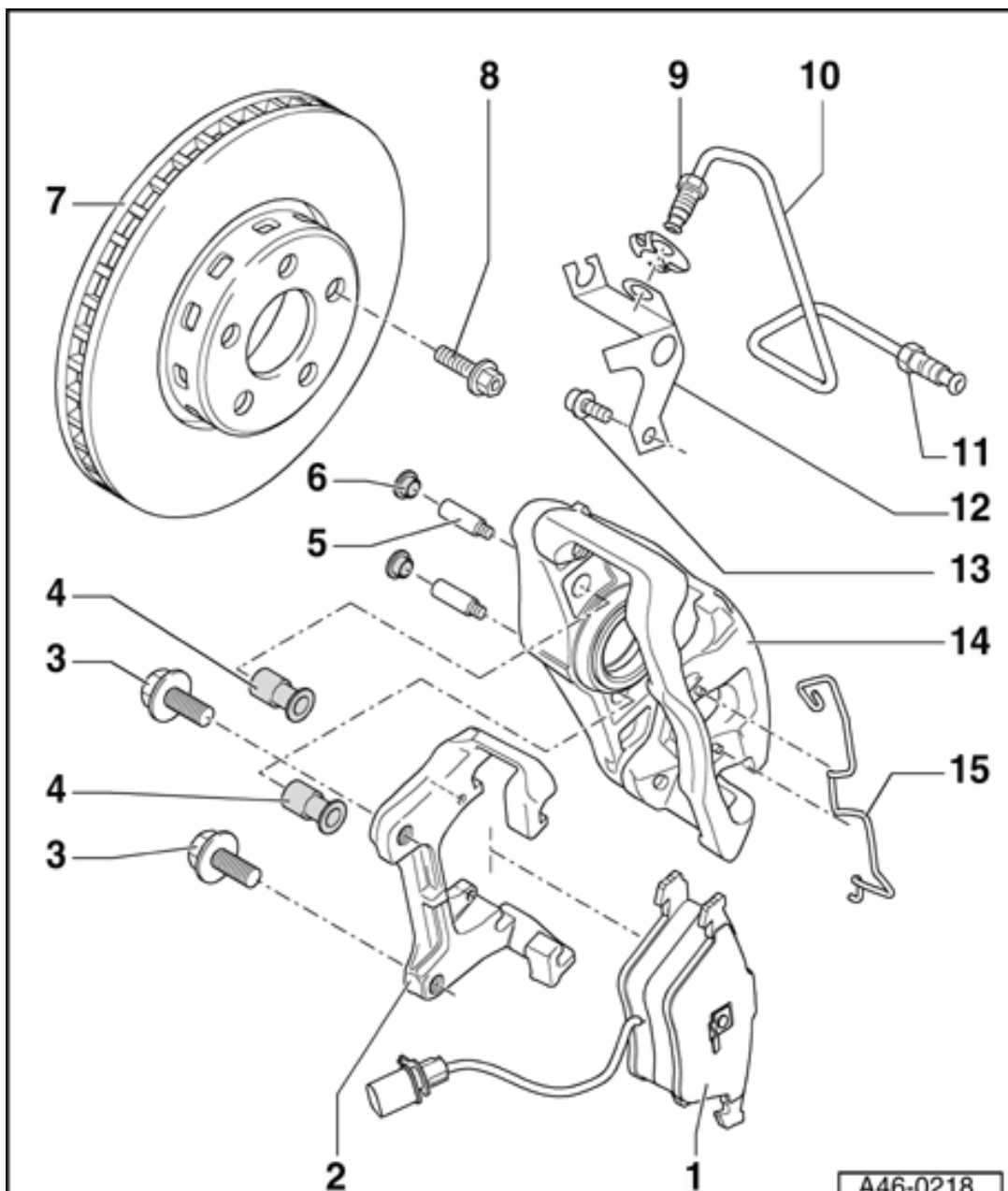
**13 - Hex bolt M8 x 16**

- ◆ Tightening torque  
25 Nm

**14 - Brake caliper housing**

- ◆ If repair work is necessary, do not hang by brake hose. Secure to vehicle using wire
- ◆ Aside from "Replacing brake pads" ⇒ [Page 46-17](#) and "Front brake caliper, servicing" ⇒ [Page 46-24](#), no other repairs may be performed to the brake caliper
- ◆ Hose must be attached without twisting

⇒ [Repair Manual, Brake System, Repair Group 00; Technical data](#)



### 15 - Retaining spring

- ◆ Pay attention to correct installation position.
- ◆ Engage retaining spring on both studs of brake caliper housing and on the outer pad.

#### **Note:**

*Retaining spring must be pressed under brake carrier after it is inserted in both holes. If the spring is improperly installed, the brake caliper cannot adjust to compensate for wear on the outer brake pad. This will cause the brake pedal travel to increase.*



## Brake pads, removing and installing

### Removing

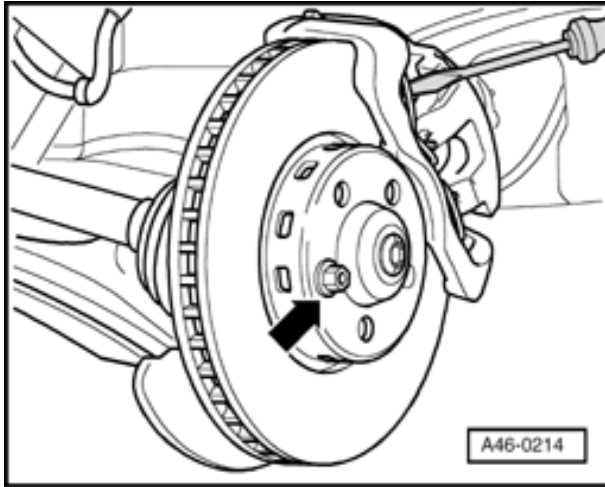
**Note:**

*Mark brake pads to be reused on removal. Reinstall in their original position to prevent uneven braking!*

*Note direction of rotation -arrow on brake disc- and installation location -left or right- when installing brake discs.*

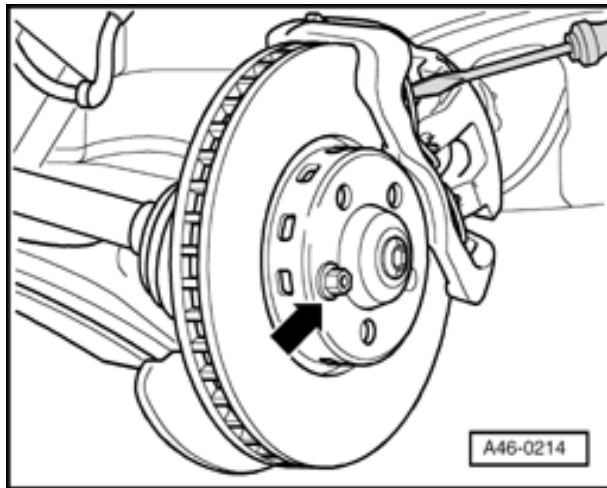
- Raise vehicle.
- Remove wheels.





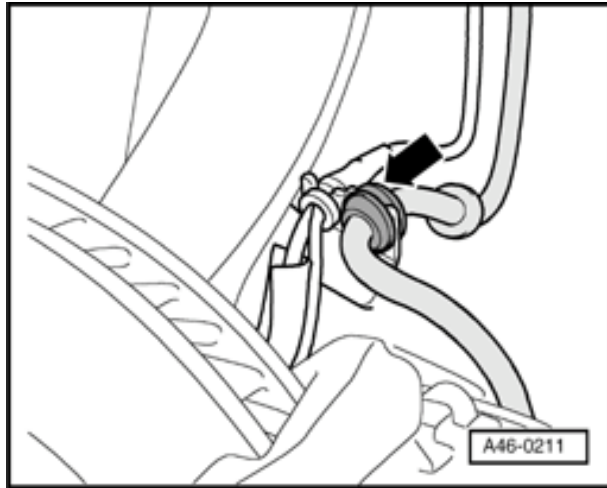
- Secure brake disc with a wheel bolt, see (arrow).

46-18

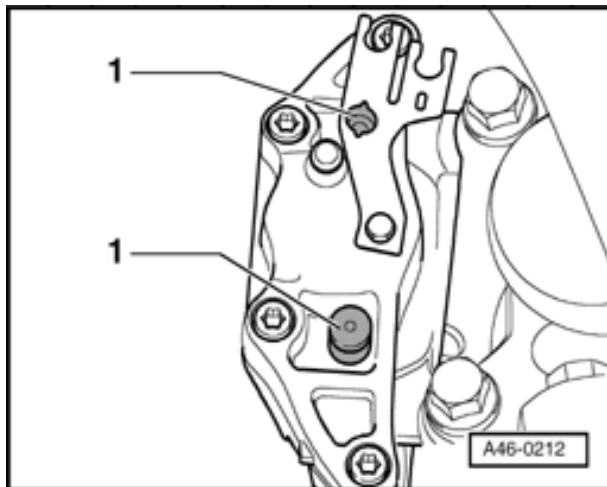


- Using screwdriver, pry off brake pad retaining spring from brake caliper housing and remove.
- Disconnect brake wear indicator connector
- Using a screwdriver, release connector from holder turning connector by 90° at same time.
- Detach connector out upward and unhook wire.

46-19

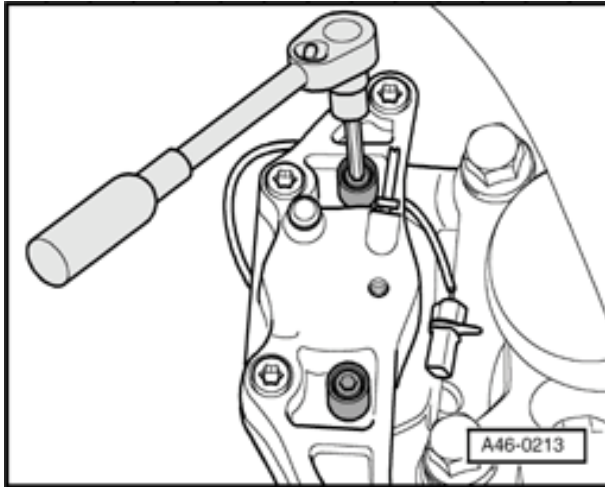


- ◀ - Detach brake line from bracket



- ◀ - Remove trim caps - 1-

46-20

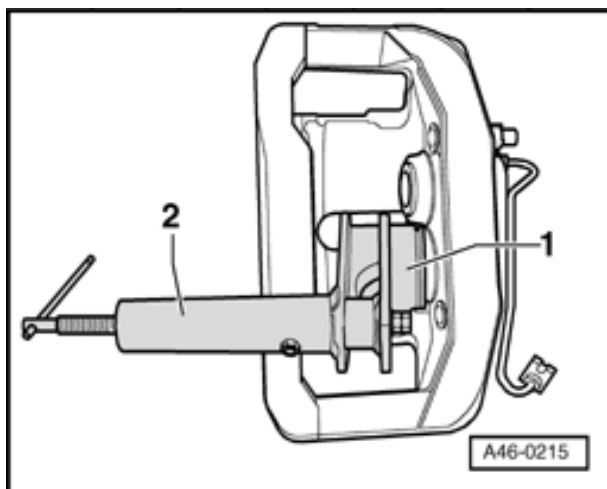


- Unscrew both guide pins and remove from brake caliper.
- Remove brake caliper housing and lay to one side so that the weight of the brake caliper does not stress or damage the brake hose.
- Take brake pads out of brake caliper housing or from brake carrier.

**Use only methylated spirits to clean brake caliper housing.**



## Installing



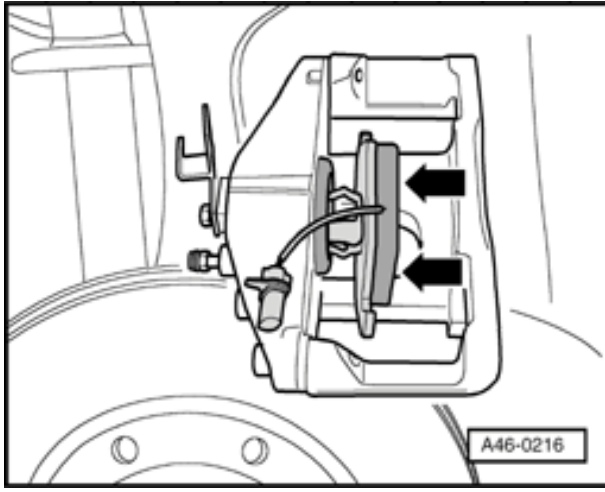
- ◀ - Press back piston.

### **Note:**

*Press piston back into caliper housing using resetting tool before inserting new brake pads. Before pushing back the piston, draw off brake fluid out of the brake fluid reservoir with a bleeder bottle. Otherwise, especially if reservoir has been topped off, fluid will overflow and cause damage.*

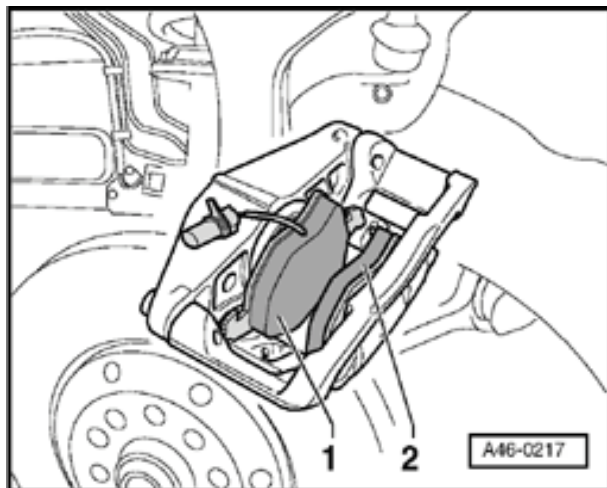
### **WARNING!**

***Brake fluid is poisonous and must not be siphoned by mouth through a hose.***



- Insert brake pad with retaining spring and wear indicator into brake caliper housing.

46-22



- ◀ - Install outer brake pad -2- onto brake caliper.

**Note:**

*Insert pads in brake carrier and install together on brake caliper and brake disc.*

- Secure brake carrier to brake caliper housing with both guide pins to 25 Nm.
- Make sure brake hose is installed without twisting.

46-23



- Install both protective caps.
  
- Insert retaining spring into brake caliper housing.
  
- Attach brake line
  
- Plug in connector for wear indicator and engage line in dust cap and trim cap.
  
- Install wheels

Tightening torque 120  
Nm

**Note:**



- ◆ *Retaining spring must be pressed under brake carrier after it is inserted in both holes. If the spring is improperly installed, the brake caliper cannot adjust to compensate for wear on the outer brake pad. This will cause the brake pedal travel to increase.*
  
  - ◆ *After installing brake pads and before moving vehicle, depress brake pedal several times firmly to properly seat brake pads in their normal operating position.*
- Check brake fluid level and top off, if necessary.



Vehicle

System

Repair Group

Previous Topic

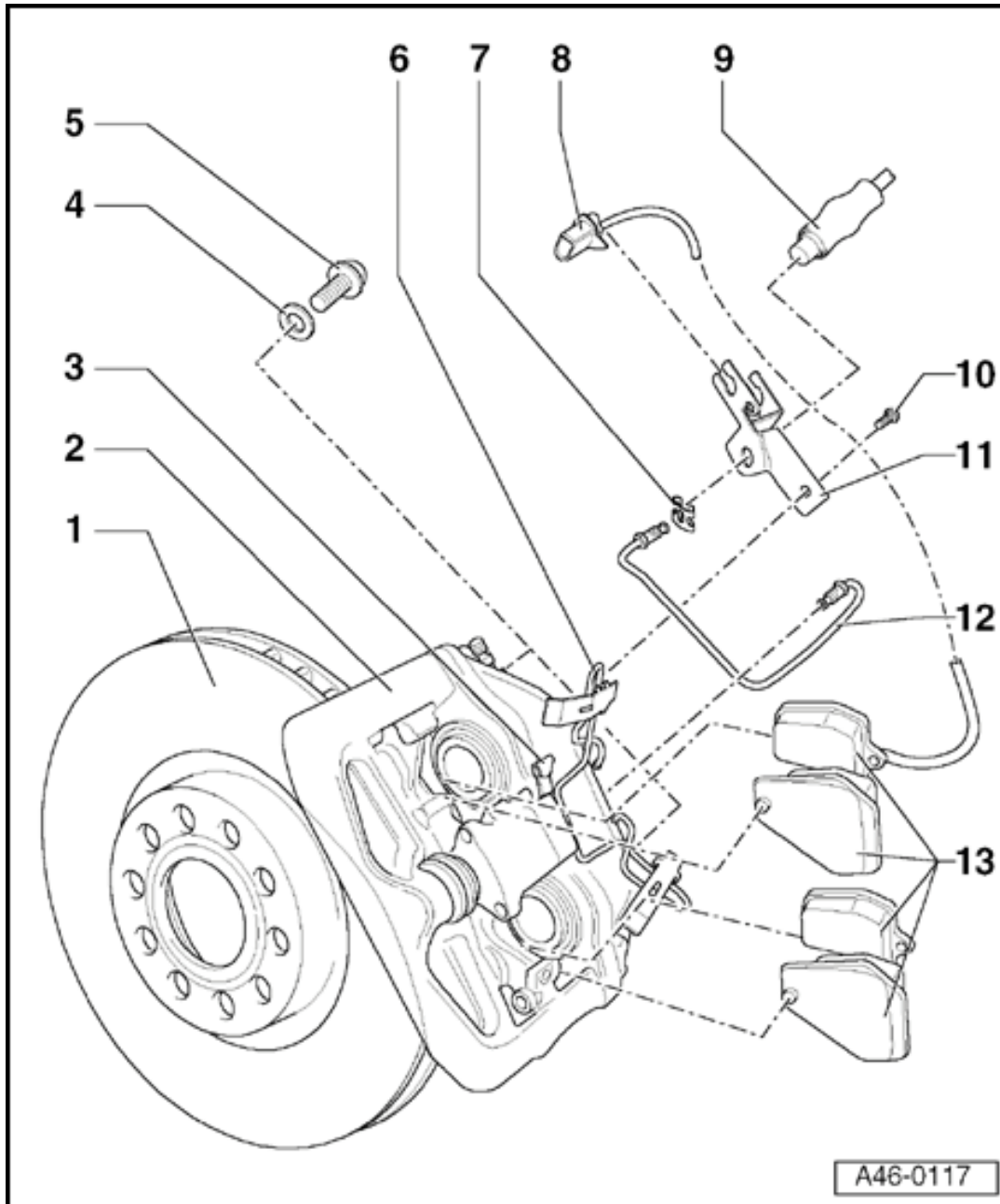
Next Topic

Technical Bulletins

Wiring Diagrams

Warnings & Cautions

Print

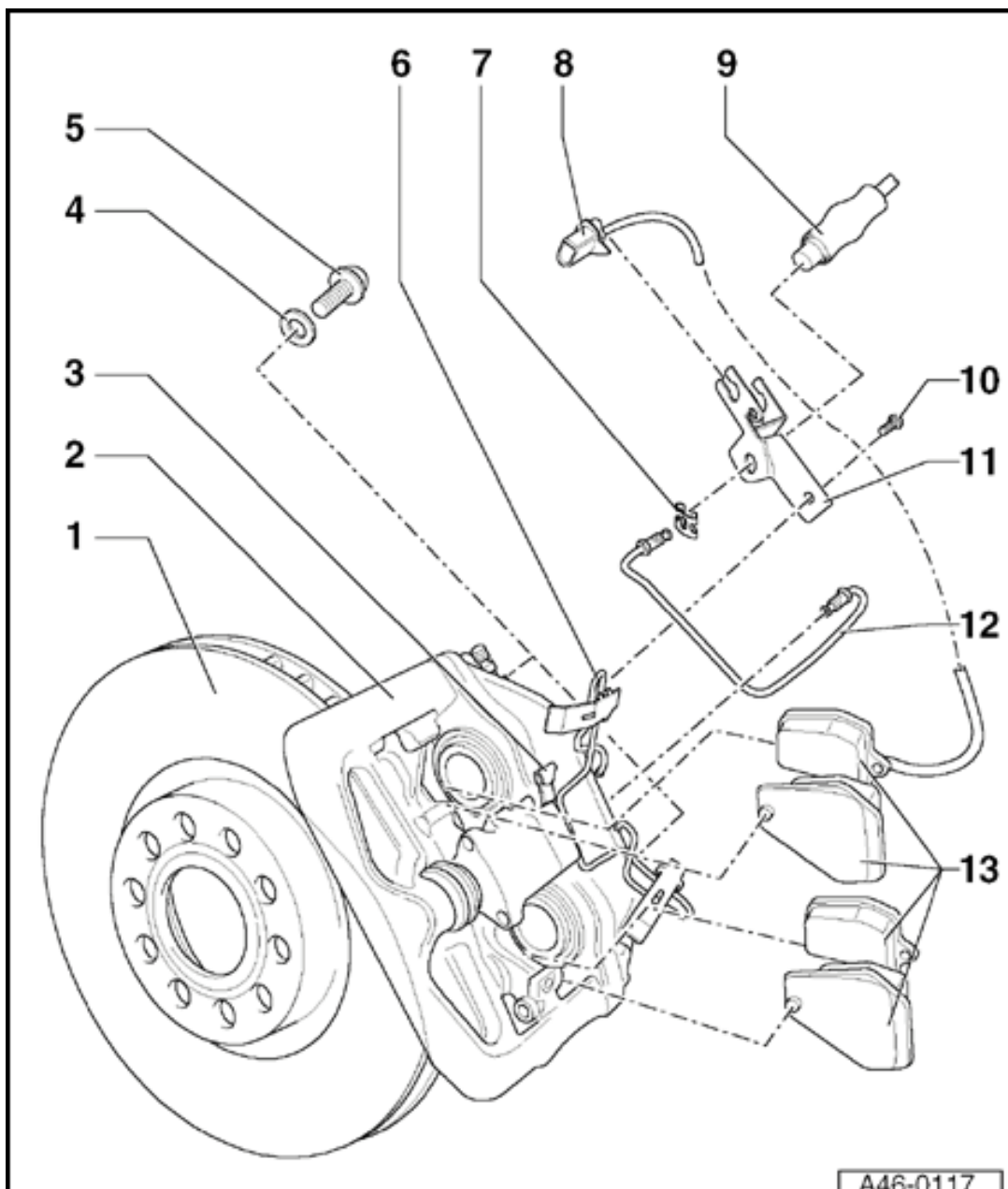


## Front brakes (HP-2) brake caliper/ aluminum

### Front brake caliper, servicing

#### Note:

- ◆ Always install complete repair kit.
- ◆ After replacing brake pads and before moving vehicle, depress brake pedal several times firmly to properly seat brake pads in their normal operating position.
- ◆ When siphoning brake fluid, always use a bleeder bottle that is used exclusively for brake fluid. Brake fluid is poisonous. NEVER siphon brake fluid with your mouth!
- ◆ Brake line tightening torque: 15 Nm.



### 1 - Brake disc

- ◆ Both sets of brake pads on front axle must always be replaced together
- ◆ Check for sufficient wear limit
- ◆ Remove brake caliper before removing

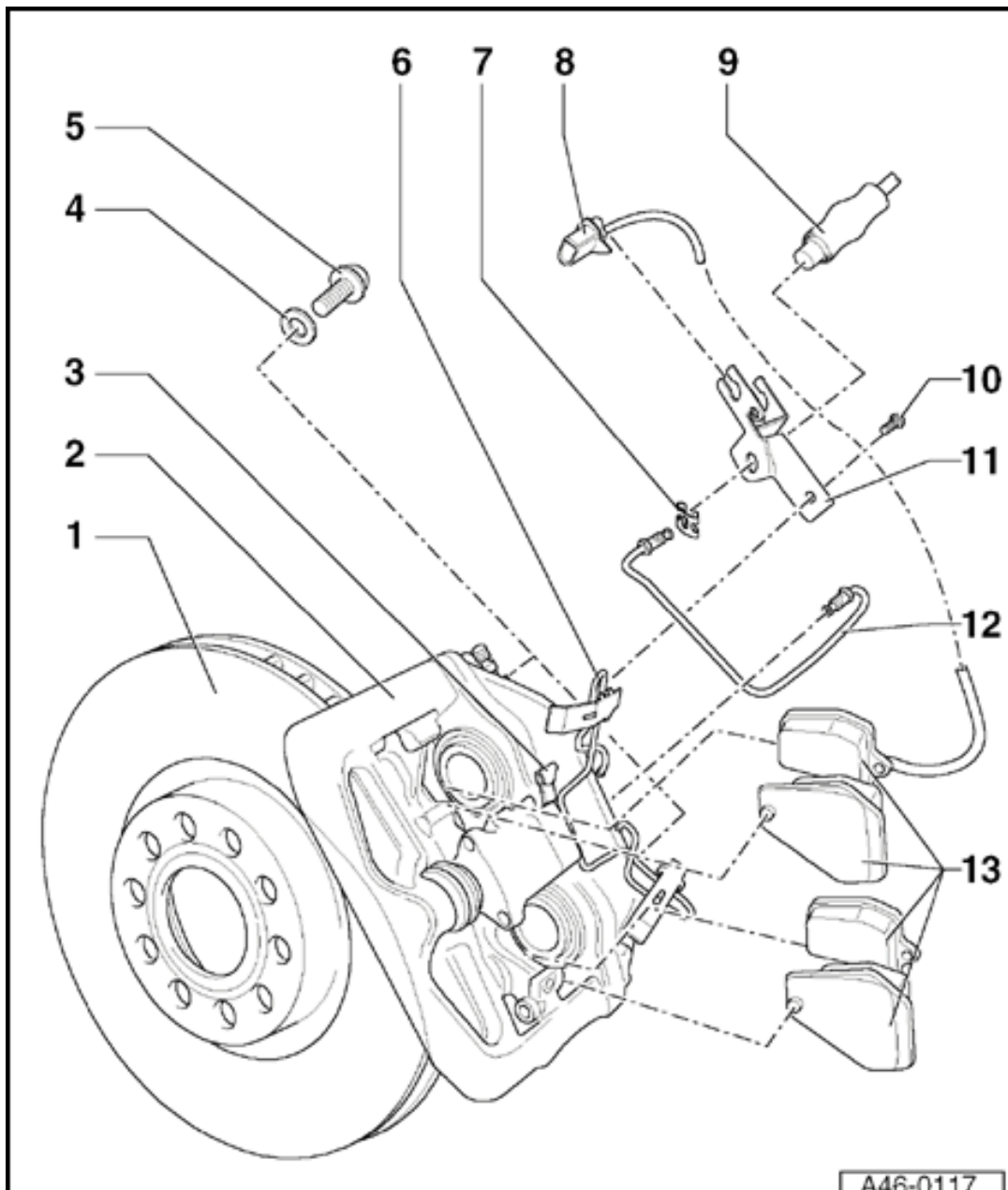
⇒ [Repair Manual, Brake System, Repair Group 00; Technical data](#)

### 2 - Brake caliper

- ◆ If repair work is necessary, do not hang by brake hose. Secure to vehicle using wire

A46-0117

- ◆ Aside from "Replacing brake pads" ⇒ [Page 46-29](#) and "Front brake caliper, servicing" ⇒ [Page 47-16](#) , no other repairs may be performed to brake caliper



**3 - Line retainer for wear indicator**

- ◆ Insert line for brake pad wear indicator in line retainer

**4 - Ribbed washer**

**5 - Ribbed bolt, 190 Nm**

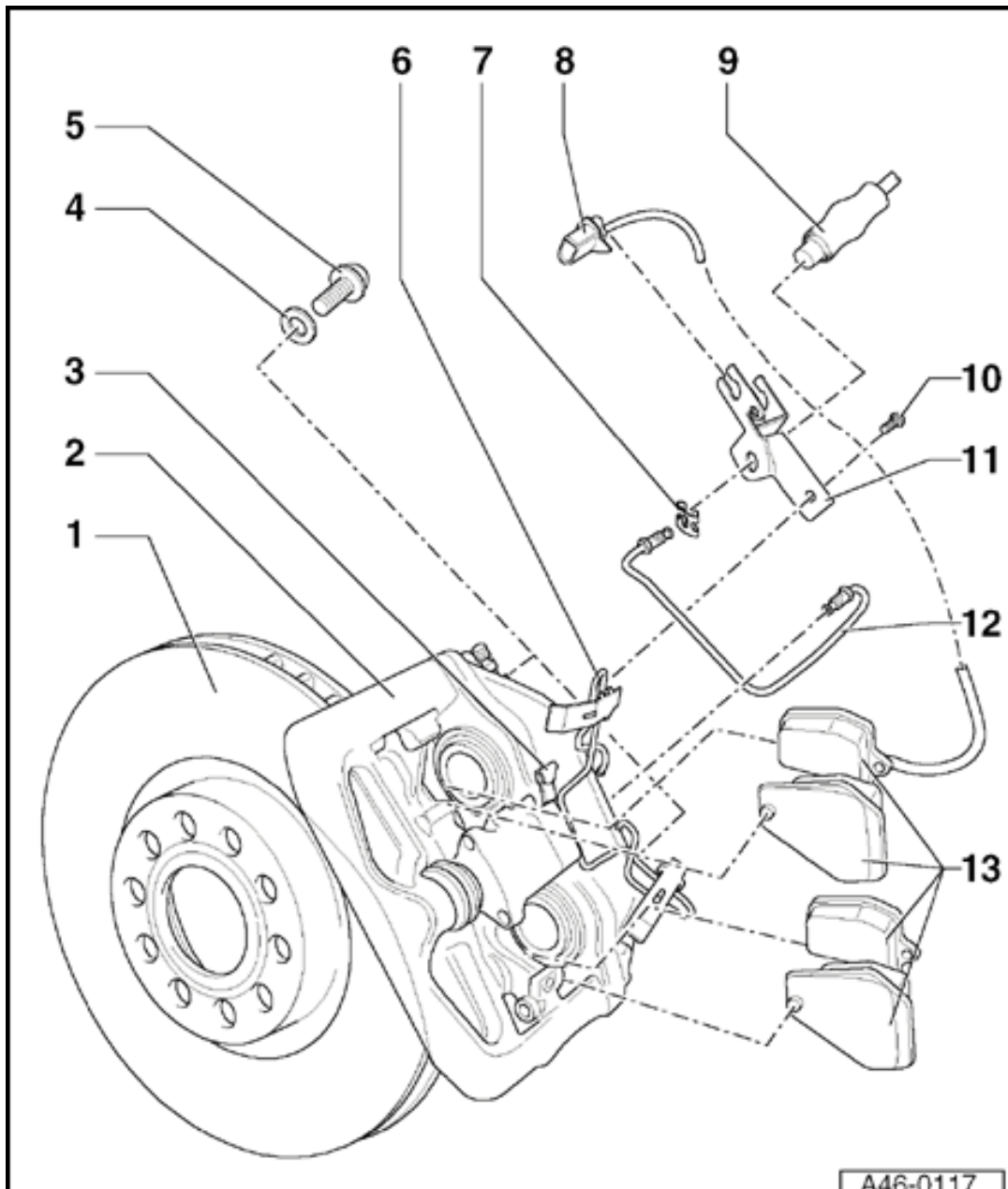
- ◆ Clean ribs if re-using

**6 - Tensioning spring**

- ◆ Slide to side
- ◆ Not removable

**7 - Retaining spring**

A46-0117



**8 - Harness connector**

- ◆ Only on vehicles with wear indicator

**9 - Brake hose**

- ◆ Do not disconnect when removing brake pads

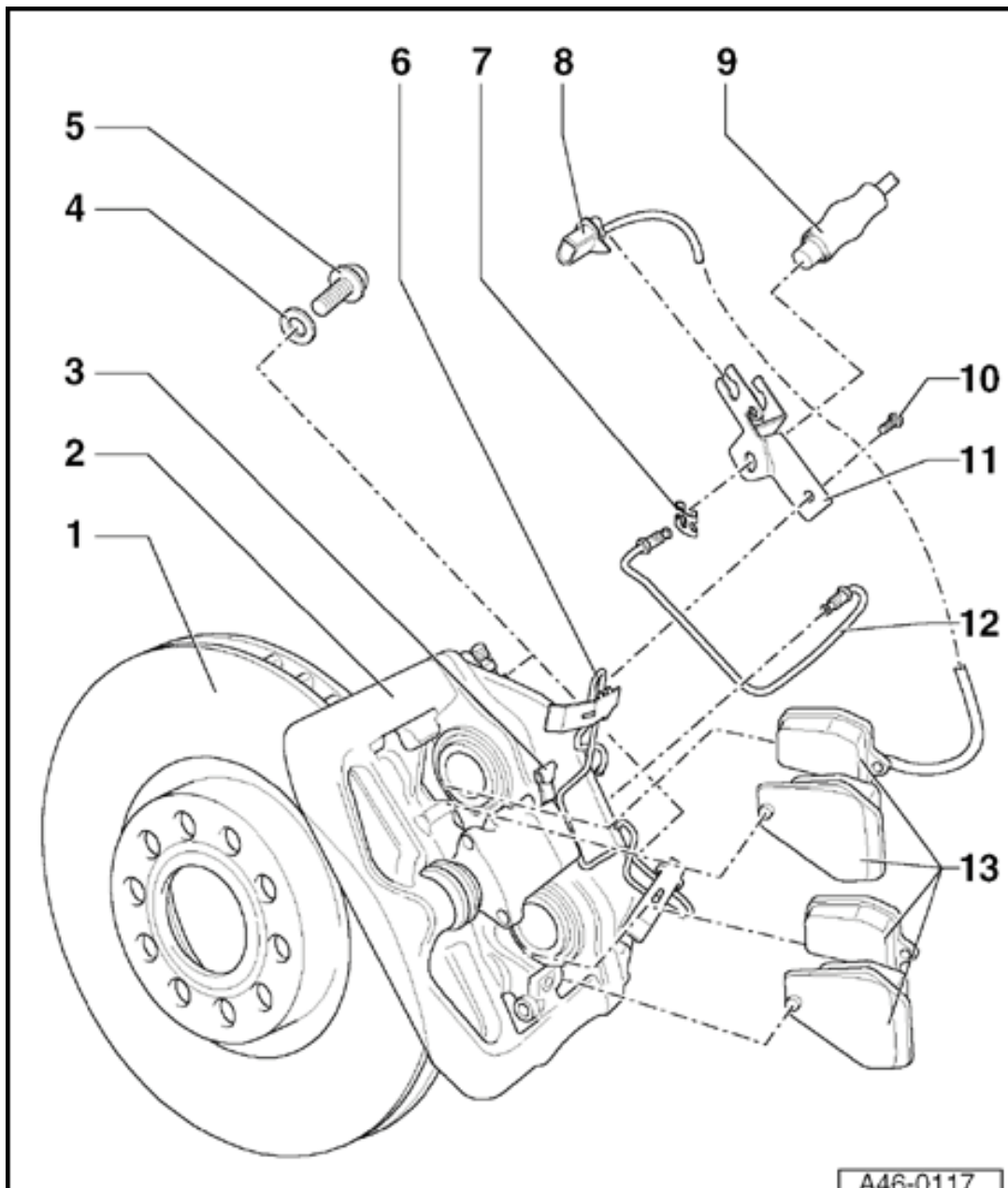
**10 - Hex bolt, 25 Nm**

**11 - Bracket**

- ◆ Bolt to brake caliper housing
- ◆ Insert harness connector for brake pad wear indicator

A46-0117





A46-0117

**12 - Brake line, 15 Nm**

**13 - Brake pads**

- ◆ Both sets of brake pads on front axle must always be replaced together
- ◆ Different on left and right sides
- ◆ Removing and installing ⇒ [Page 46-29](#)
- ◆ With wear indicator
  - Once wear limit is reached (limit: 3 mm), warning light in instrument cluster comes on.
- ◆ Remove adhesive foil from backing plates on outer brake pads before installing

⇒ [Repair Manual, Brake System, Repair Group 00;](#)

A46-0117

[Technical data](#)



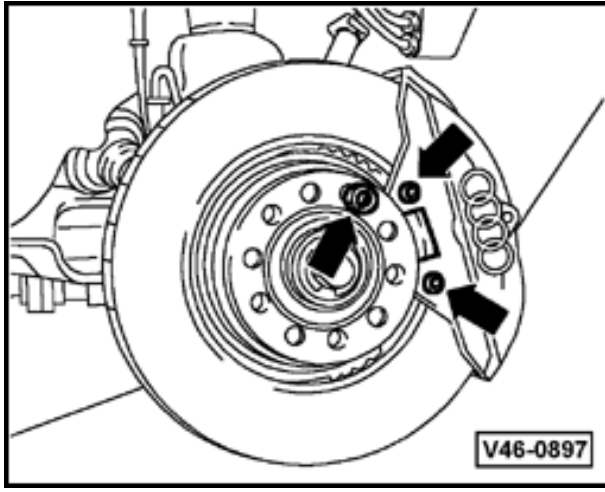
## Brake pads, removing and installing

### Removing

**Note:**

*If re-using brake pads, mark them so that they can be installed in their original positions to prevent uneven braking.*

- Raise vehicle.
- Remove wheels.

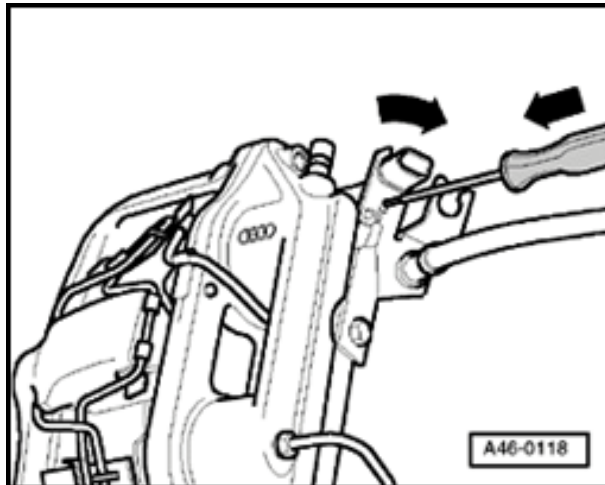


- ▲ - Secure brake disc using a wheel bolt.

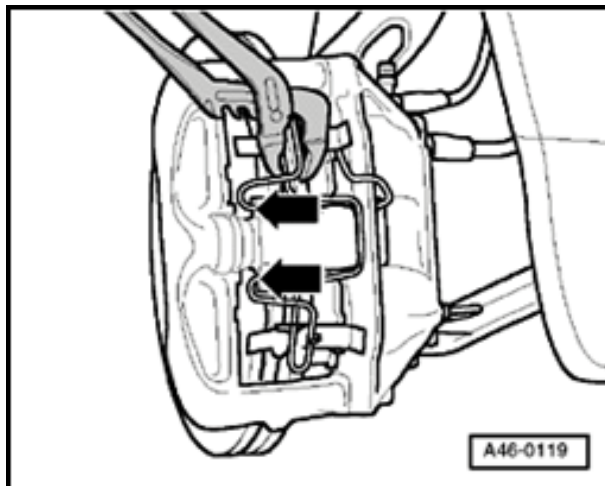
46-30



- Disconnect connector for brake pad wear indicator.



- Disengage connector from bracket using a screwdriver and simultaneously turn connector 90° .
- Lift connector up and out and disengage wire.



- Press upper and lower spring tensioner out of locking mechanism using pliers (arrows).
- Slide spring to side.

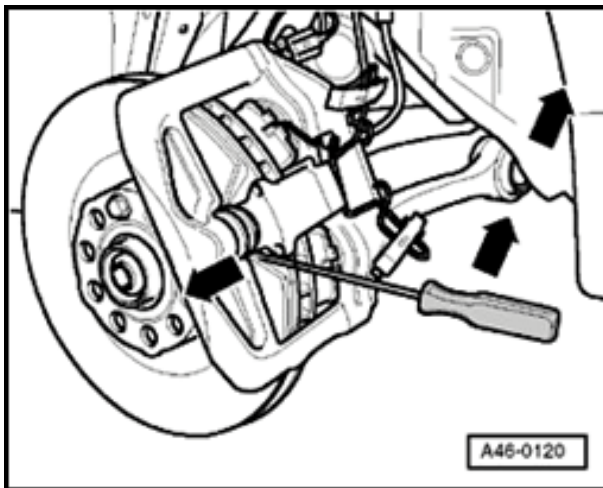


**Note:**

*Before pushing back piston, siphon some of the brake fluid out of the brake fluid reservoir. Otherwise, especially if reservoir has been topped off, fluid will overflow and cause damage.*

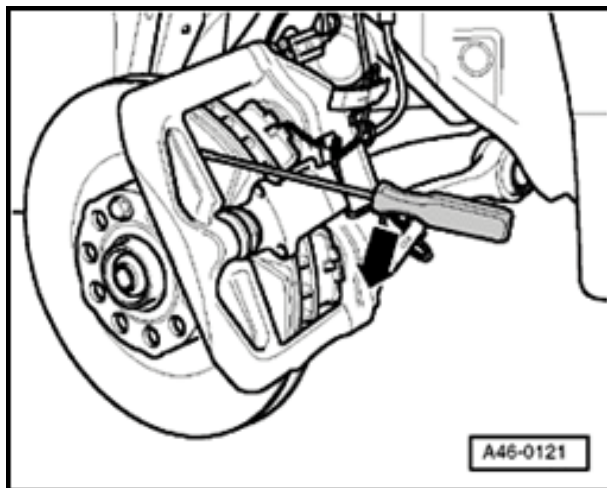
**WARNING!**

***Brake fluid is poisonous. NEVER siphon brake fluid with your mouth.***

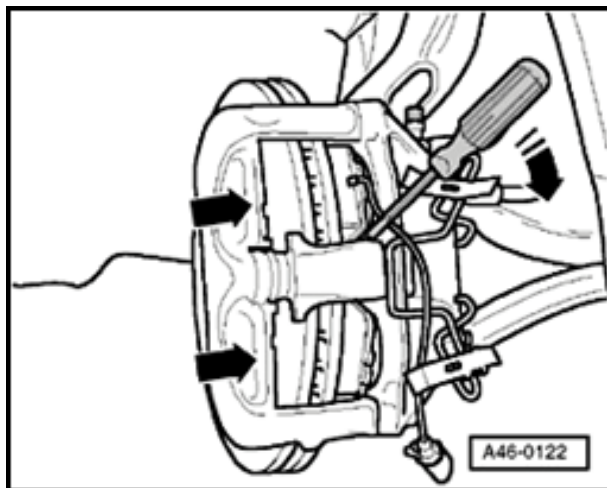


- Press piston back into brake caliper housing.
- To do this, insert floating frame using a screwdriver as shown and press powerfully outward.

46-32



- ▲ - First use screwdriver to press outer brake pads off brake caliper.

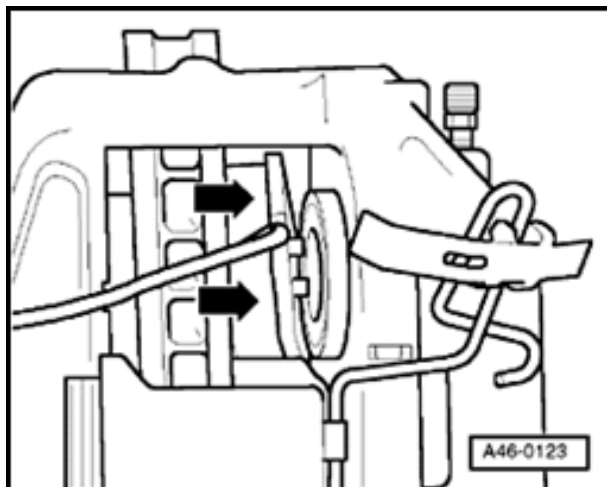


- ⚠ - Press floating frame firmly in direction of (arrow) until stop.
- Pry brake pads carefully out of piston and remove brake caliper housing.

**Note:**

- ◆ Clean brake caliper housing thoroughly before installing new brake pads.
- ◆ Be especially careful to remove any residual adhesive foil on outer brake pads.

**Installing**



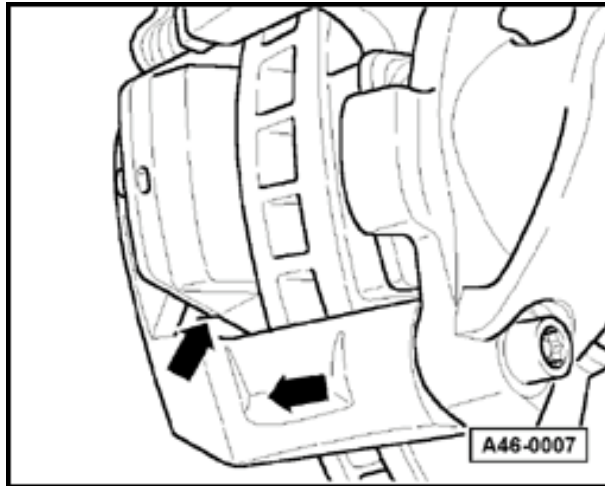
- ⚠ - Insert lower and upper brake pads in piston.

**Note:**

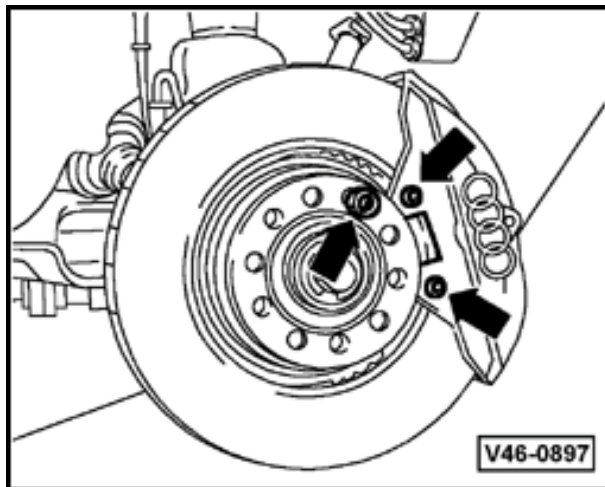
- ◆ Make sure protrusions on backing plates are securely fitted in brake piston.
- ◆ Do not damage protective caps when installing brake pads.



46-34



- ▲ - Press floating frame outward until stop.
- Remove protective foil on backing plates of outer brake pads.



- ▲ - Make sure protrusions on backing plate are securely fitted in floating frame.

**Note:**

*After replacing brake pads and before moving vehicle, always depress brake pedal several times firmly to properly seat brake pads in their normal operating position.*

46-35



- Remove wheel bolt from wheel hub.

**Note:**

*When installing wheels, make sure rim flange does not rest on brake caliper. This could push brake pads out of position.*

- Install wheels

Tightening torque 120  
Nm

- Check brake fluid level and top off, if necessary.



Vehicle

System

Repair Group

Previous Topic

Next Topic

Technical  
Bulletins

Wiring Diagrams

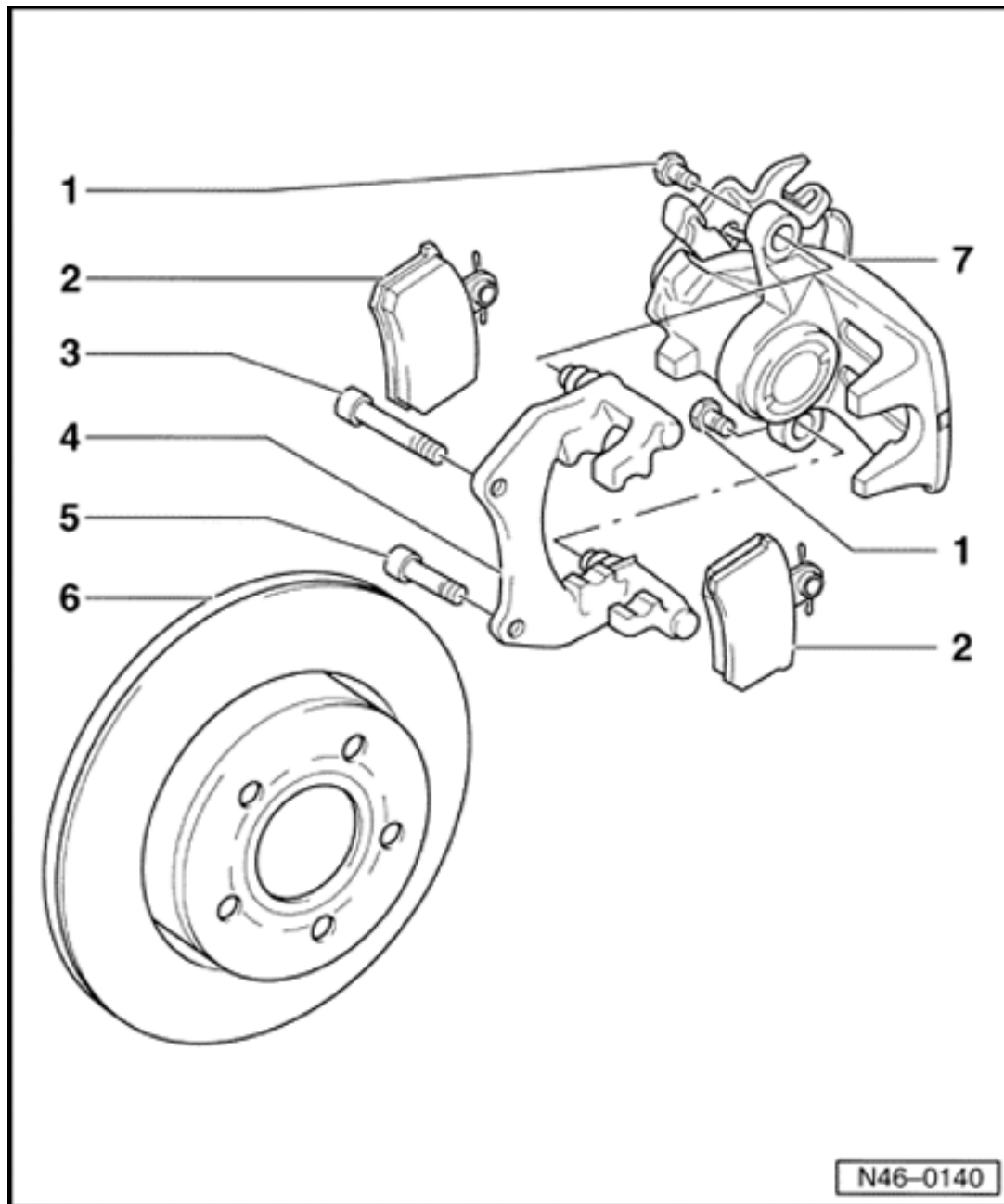
Warnings &  
Cautions

Print

Search

Advanced  
Search

eBahn®  
Version: 2.5r01sp0003



## Rear brakes C38

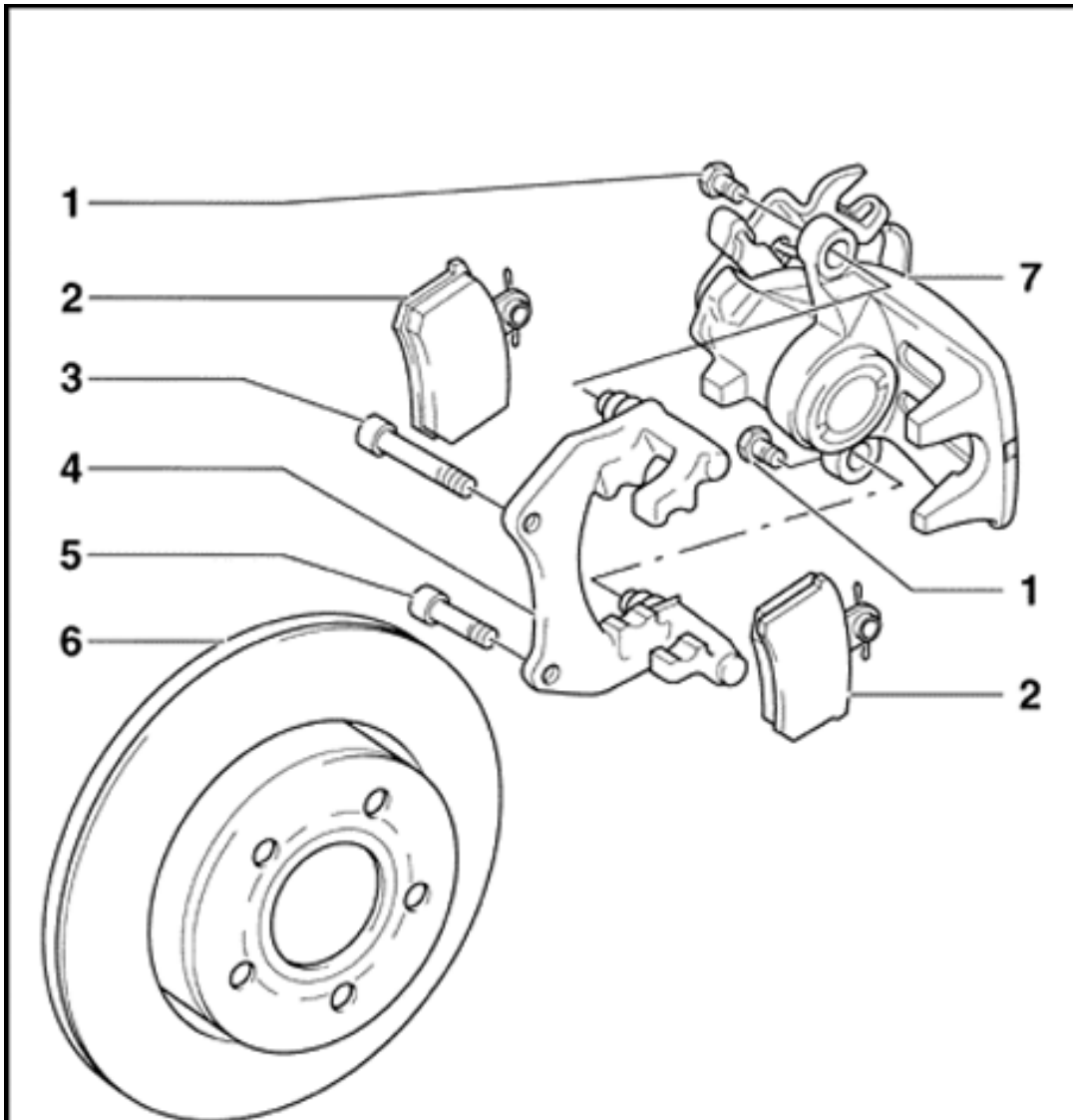
### Brake calipers, servicing

#### Rear brakes with automatic adjustment

**Note:**

- ◆ *Always install the complete repair kit.*
- ◆ *After replacing brake pads and before moving vehicle, depress brake pedal several times firmly to properly seat brake pads in their normal operating position.*
- ◆ *When siphoning brake fluid, always use a bleeder bottle that is used exclusively for brake fluid. Brake fluid is poisonous. NEVER siphon brake fluid with your mouth!*

- ◆ *Brakes can be tested on all normal commercial test equipment, provided the two brake test rollers are not driven faster than 5.5 km/h.*



### 1 - Self-locking bolts, 35 Nm

- ◆ Always replace
- ◆ When loosening and tightening counter-hold on guide pin

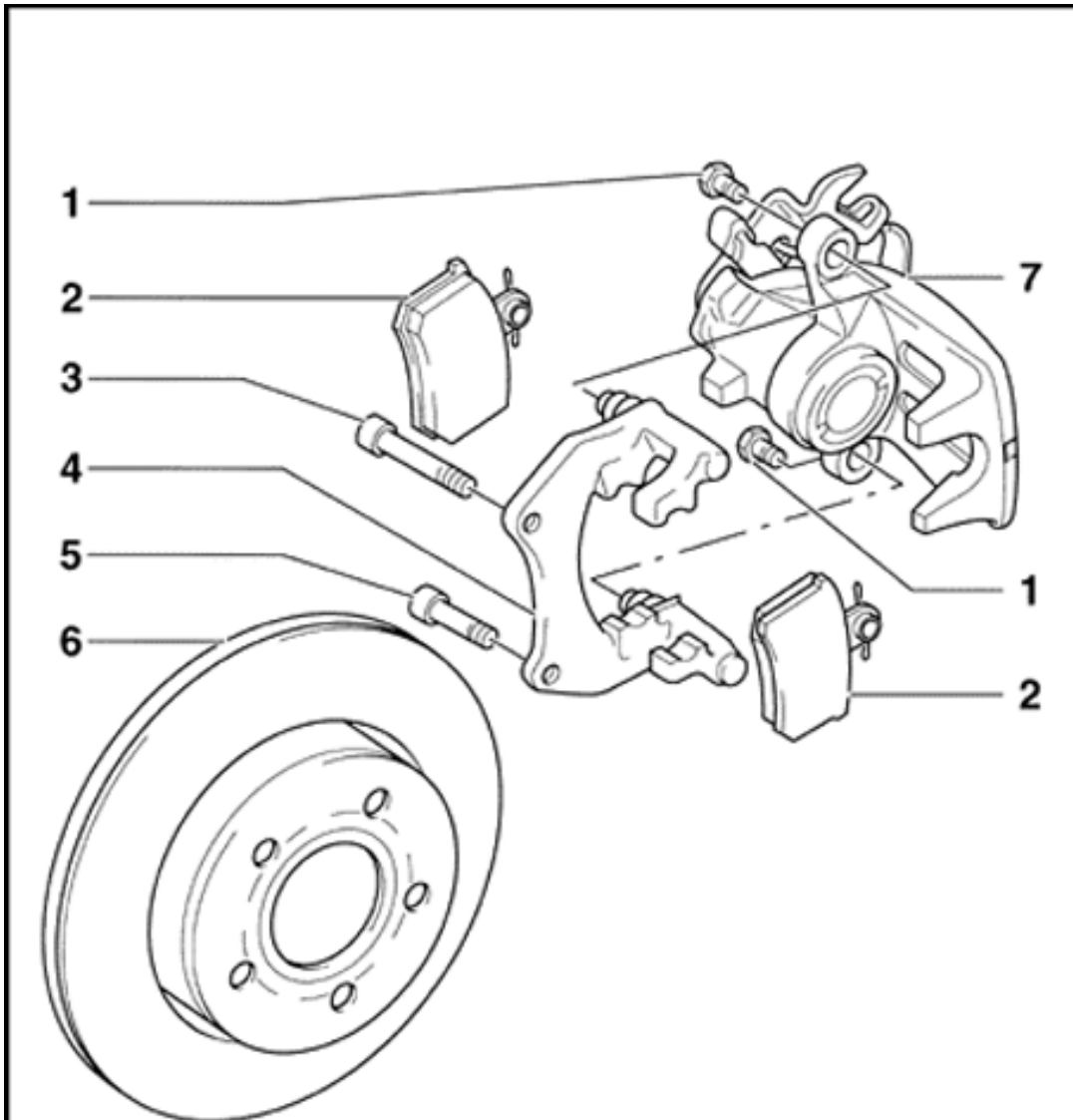
### 2 - Brake pads

- ◆ Brake pad sets on both sides of axle must always be replaced together
- ◆ Removing and installing ⇒ [Page 46-52](#)
- ◆ Checking thickness

⇒ [Repair Manual, Maintenance](#) ⇒ [Repair Manual, Brake System, Repair Group 00; Technical data](#)

### 3 - Ribbed bolt, 95 Nm

46-50

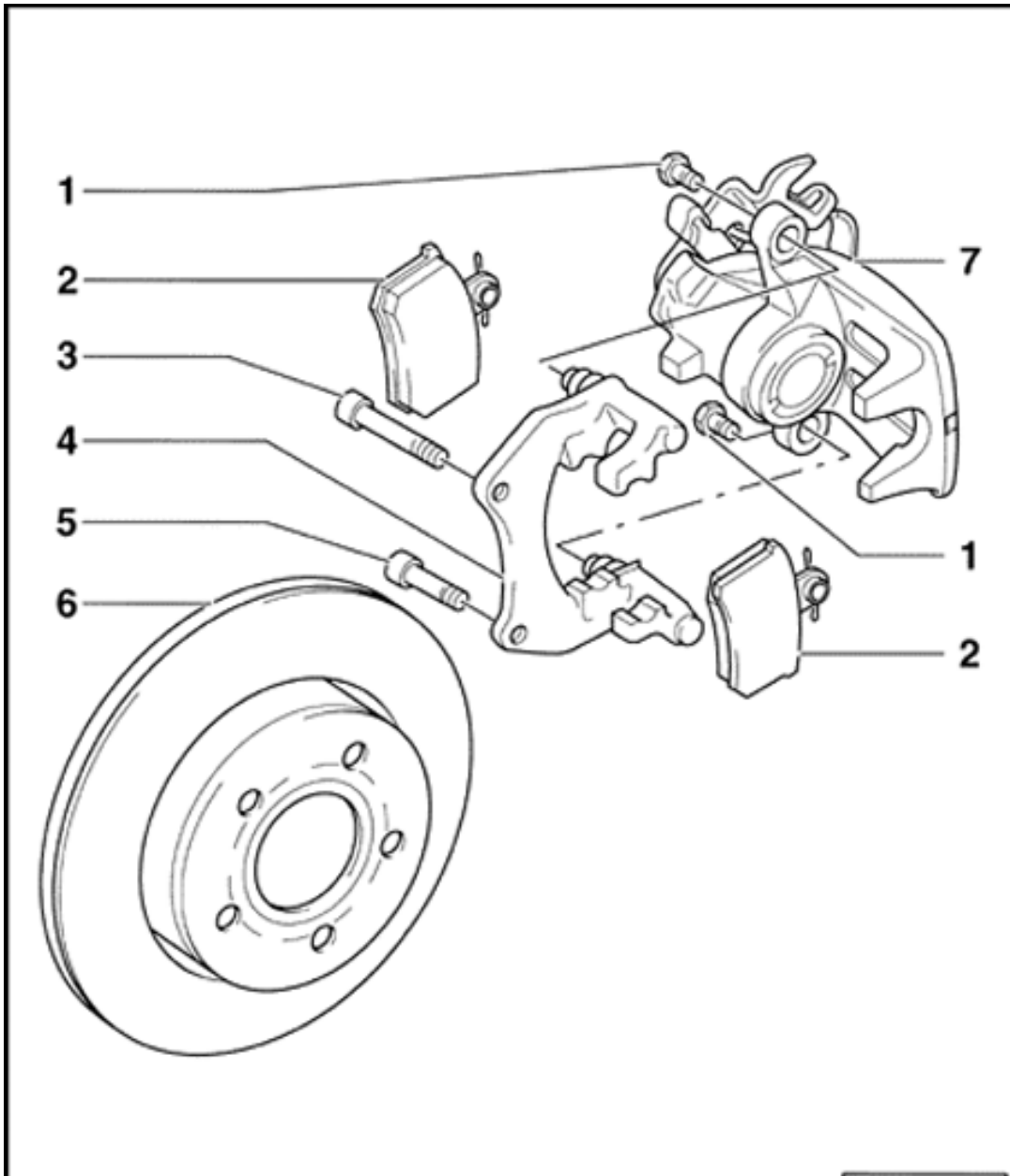


**4 - Brake carrier with guide pins and protective cap**

- ◆ Supplied as pre-assembled replacement part with sufficient grease on guide pins
- ◆ If protective caps or guide pins are damaged, install repair kit. Use grease packet supplied to lubricate guide pins

**5 - Ribbed bolt, 95 Nm**

46-51



## 6 - Brake disc

- ◆ Brake pad sets on both sides of axle must always be replaced together
- ◆ Remove brake caliper before removing

⇒ [Repair Manual, Brake System, Repair Group 00; Technical data](#)

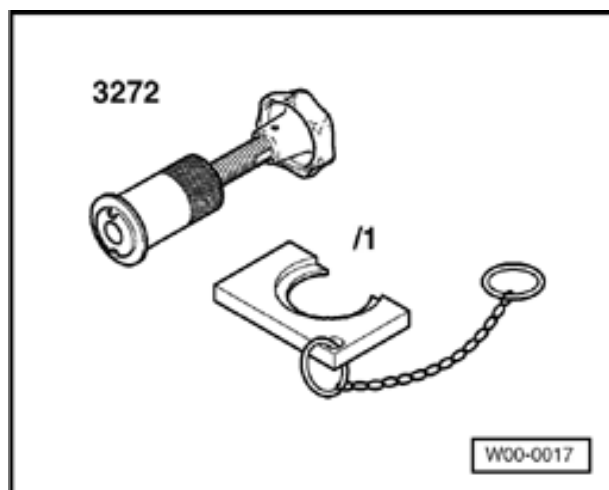
## 7 - Brake caliper housing

- ◆ Do not disconnect brake hose when changing brake pads
- ◆ Tighten brake hose to brake caliper housing to 45 Nm
- ◆ Hose must be installed twist-free
- ◆ Servicing brake caliper ⇒ [Page 46-24](#)



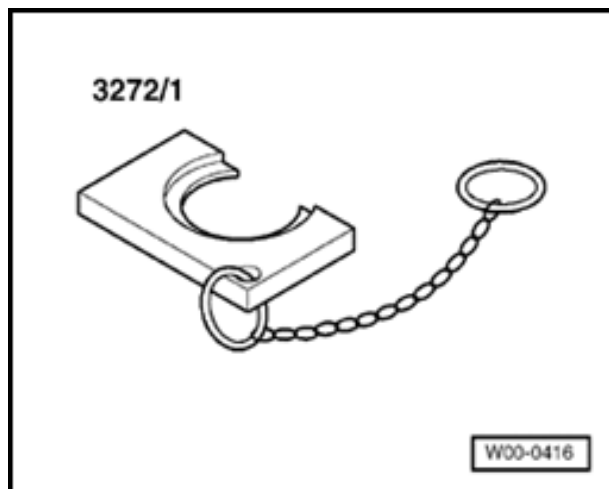
## Brake pads, removing and installing

### Special tools and equipment



- ◆ 3272 reset tool





◆ 3272/1 support plate

46-53

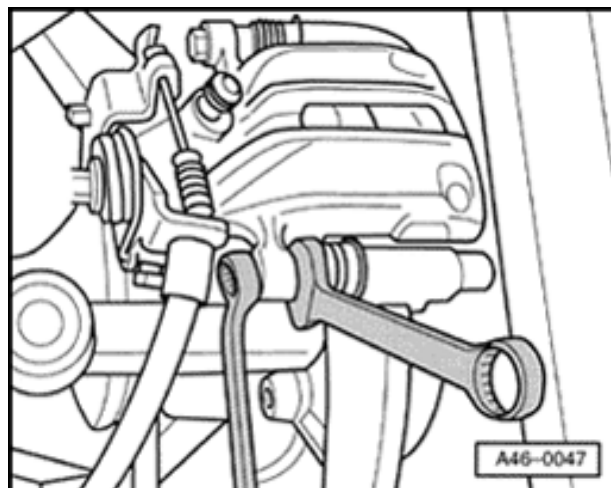


## Removing

### **Note:**

*If re-using brake pads, mark them so that they can be installed in their original positions to prevent uneven braking.*

- Remove wheels.



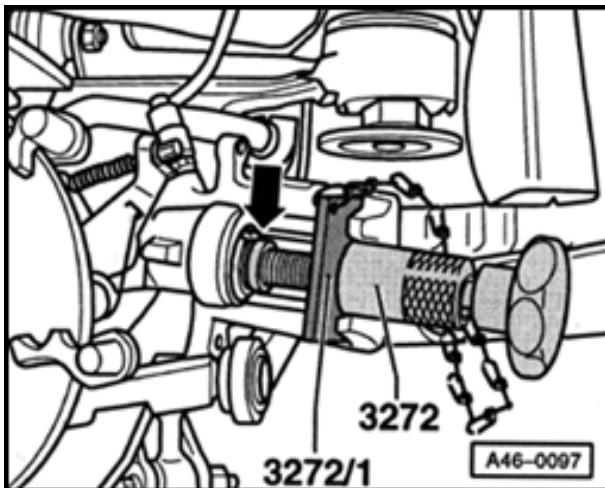
- Counter-hold guide pins and remove self-locking bolts from brake caliper housing.
- Remove brake pads.



## Installing

### Note:

*Before pushing back the piston, siphon some of the brake fluid out of the brake fluid reservoir. When siphoning brake fluid, always use a bleeder bottle that is used exclusively for brake fluid. Brake fluid is poisonous. NEVER siphon brake fluid with your mouth!*

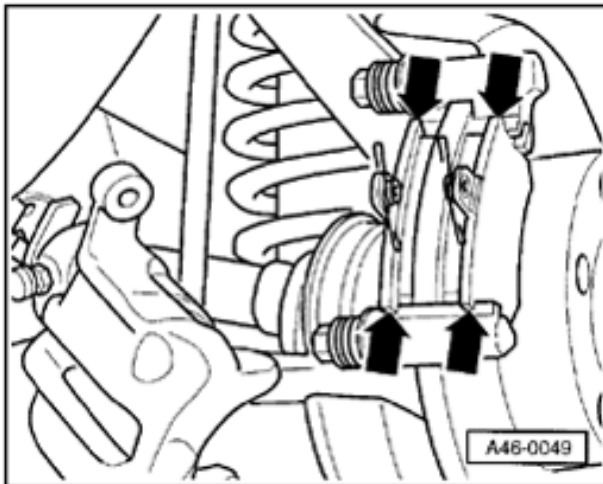


- Screw piston inward as far as it will go by turning threaded spindle clockwise and knurled section counterclockwise.

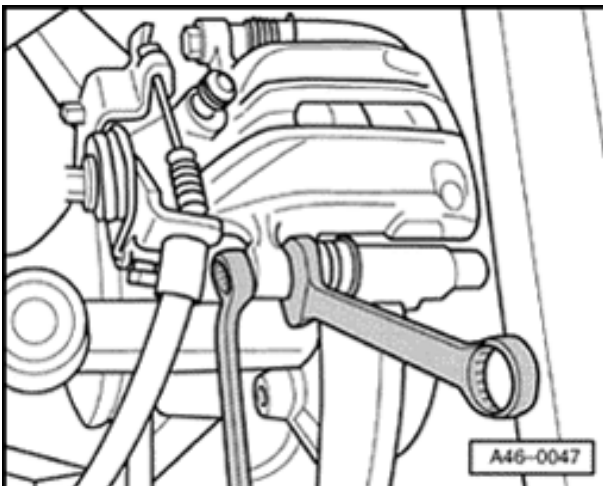
46-55



- Remove protective foil on brake pad backing plates.



- A - Insert brake pads.



- A - Secure brake caliper housing using new self-locking bolts.
- Tighten bolts on brake caliper housing to 35 Nm.

**Note:**

- ◆ *Repair kit includes four self-locking hex-bolts which must always be installed.*

- ◆ *After replacing brake pads and before moving vehicle, always depress brake pedal several times firmly to properly seat brake pads in their normal operating position.*
- When installing, tighten wheels to 120 Nm.
- Check brake fluid level and top off, if necessary.



Vehicle

System

Repair Group

Previous Topic

Next Topic

Technical  
Bulletins

Wiring Diagrams

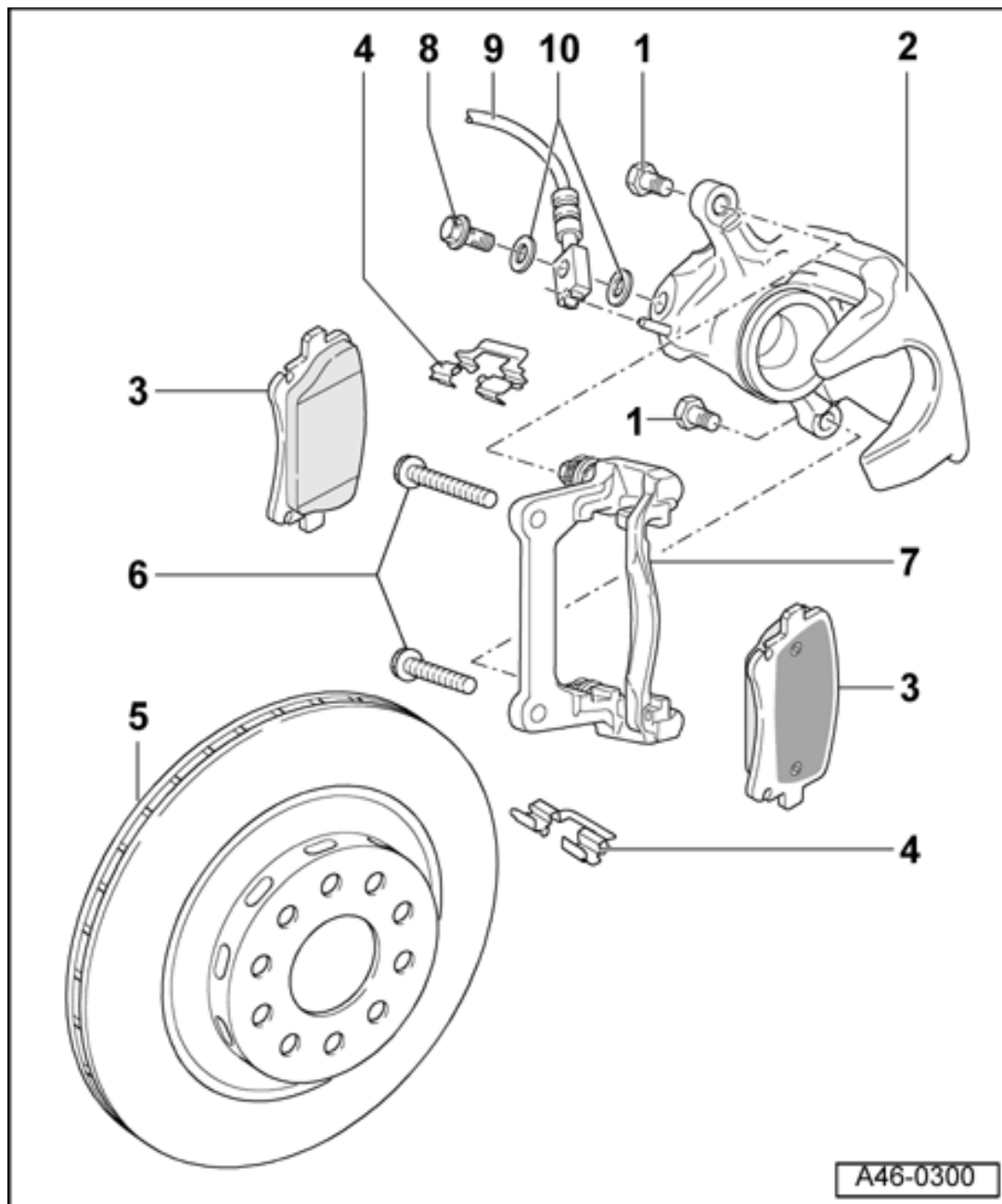
Warnings &  
Cautions

Print

Search

Advanced  
Search

eBahn®  
Version: 2.5r01sp0003



A46-0300

## Rear brakes C43

### Brake caliper, servicing

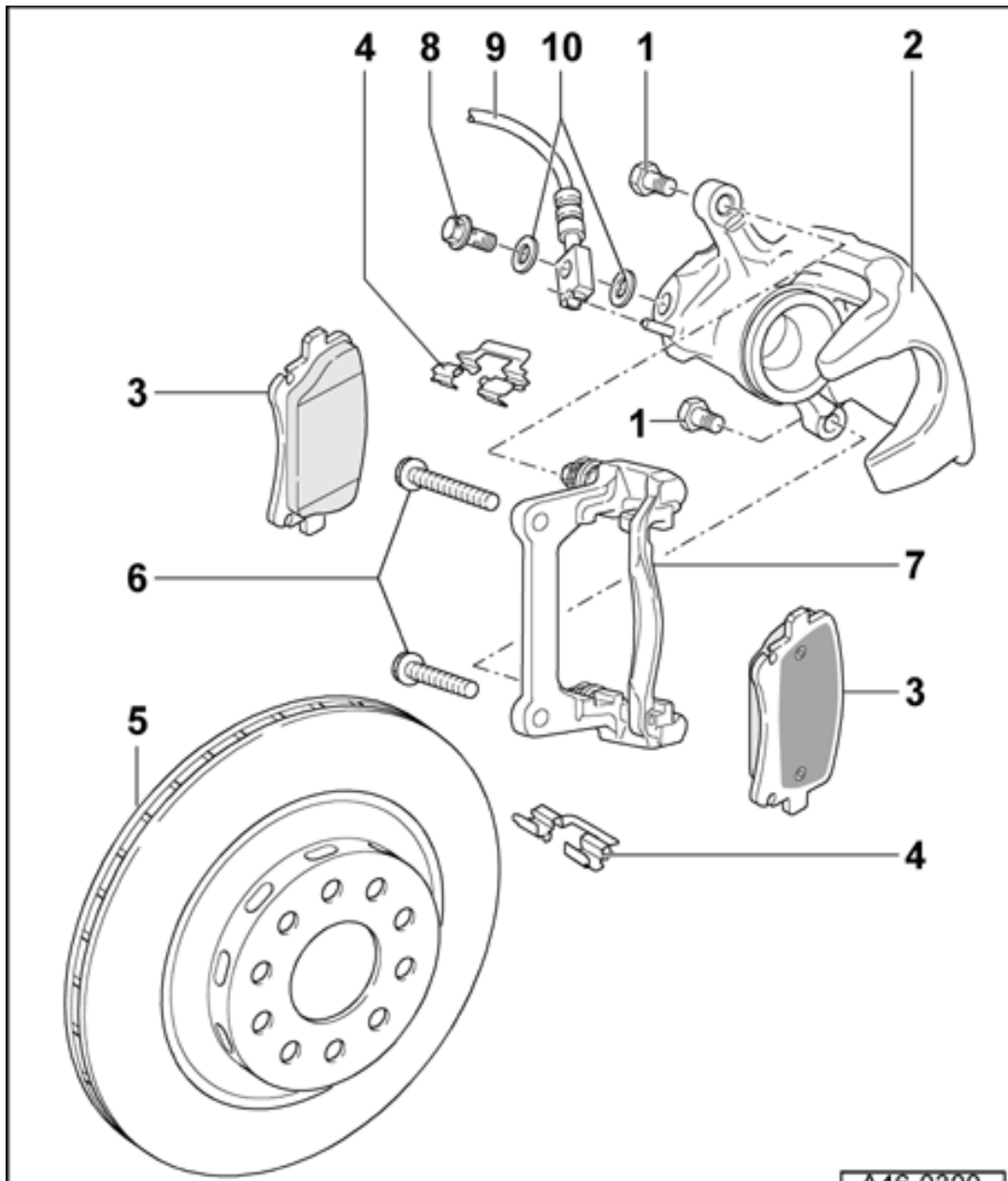
#### Rear brakes with automatic adjustment

**Note:**

- ◆ Always install the complete repair kit.
- ◆ After replacing brake pads and before moving vehicle, depress brake pedal several times firmly to properly seat brake pads in their normal operating position.
- ◆ When siphoning brake fluid, always use a bleeder bottle that is used exclusively for brake fluid. Brake fluid is poisonous. NEVER siphon brake fluid with your mouth!

- ◆ *Brakes can be tested on all normal commercial test equipment, provided the two brake test rollers are not driven faster than 5.5 km/h.*

46-57



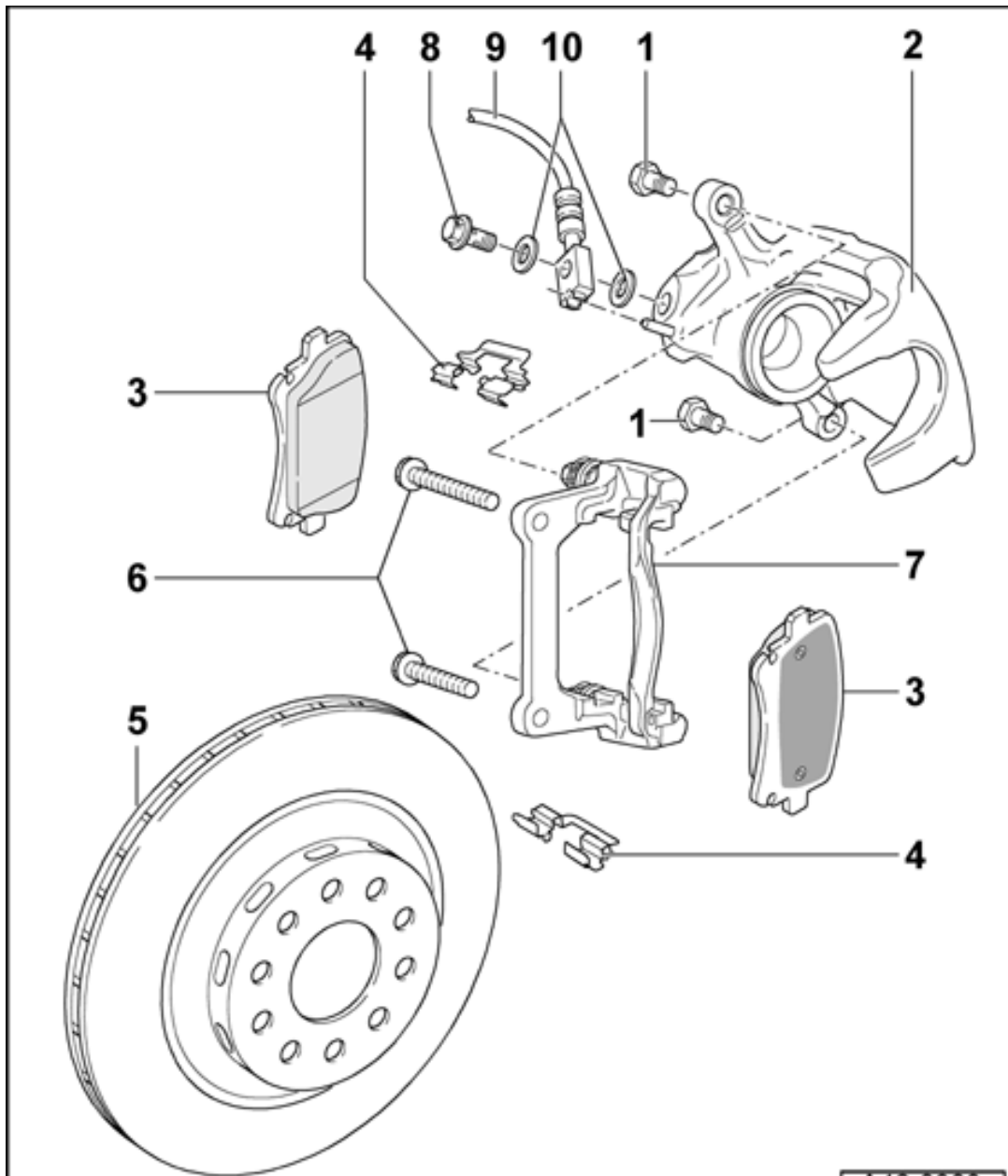
**1 - Hex bolt, self-locking, 35 Nm**

- ◆ Always replace
- ◆ When loosening and tightening counter hold on guide pin

**2 - Brake caliper housing**

- ◆ Unbolt caliper housing when changing brake pads
- ◆ Hose must not be twisted when installed
- ◆ Do not disconnect brake hose when changing brake pads
- ◆ Servicing brake caliper ⇒ [Page 47-30](#)





### 3 - Brake pads

- ◆ If required, always renew both sides together
- ◆ Do not disconnect brake hose when changing brake pads
- ◆ Removing and installing ⇒ [Page 46-61](#)
- ◆ Checking thickness:

⇒ [Maintenance Manual](#)

### 4 - Pad retaining spring

- ◆ Always replace when changing pads

### 5 - Brake disc

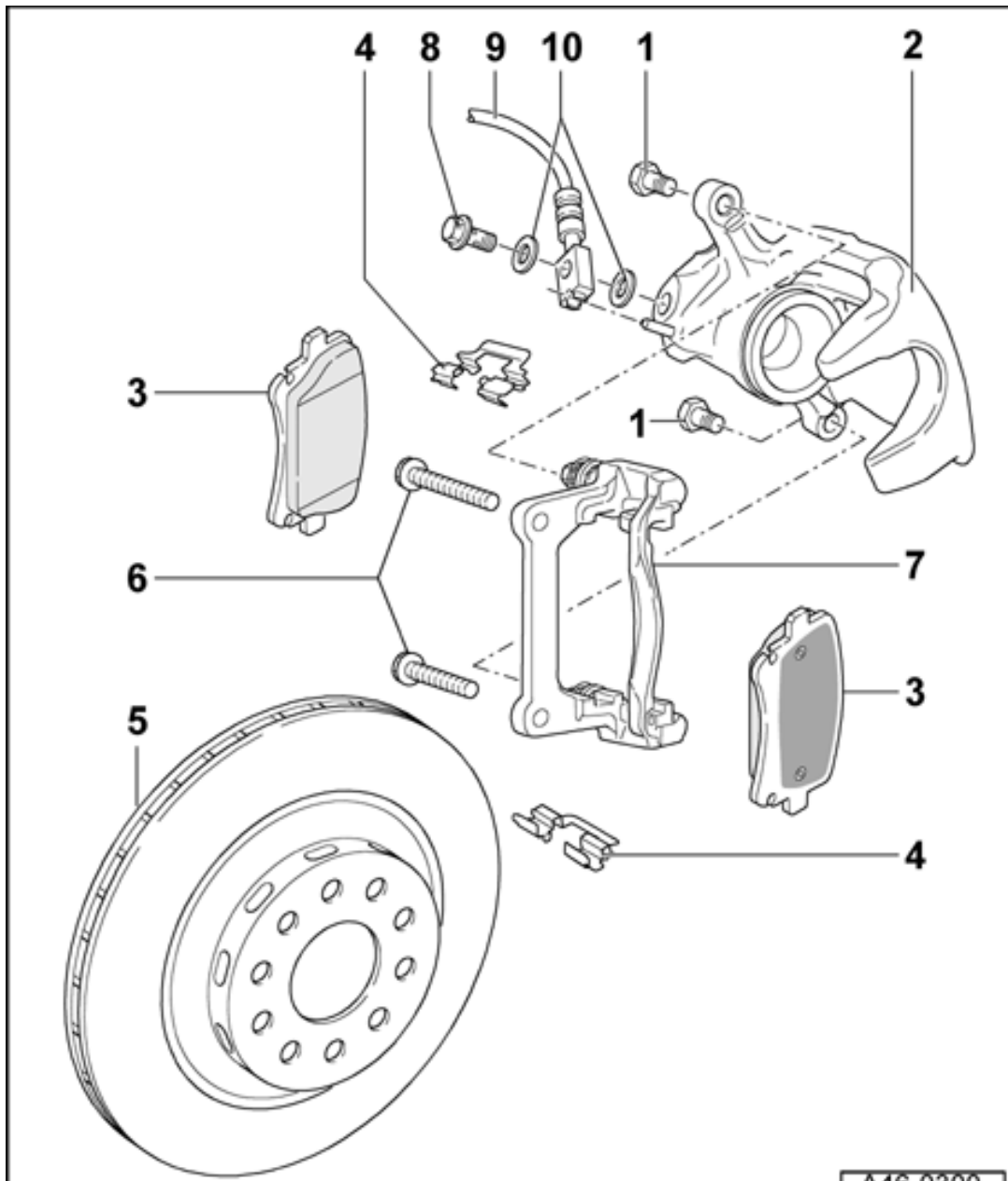
- ◆ If required, always replace both sides together

A46-0300

- ◆ Remove brake caliper prior to removing
- ◆ Lightly coat contact surfaces between brake disc and wheel hub with polycarbamide grease G 052 142 A2
- ◆ Check degree of wear (wear limit)

⇒ [Repair Manual, Brake System, Repair Group 00; Technical data](#)

46-59



### 6 - Hexagon socket head bolts

- ◆ M10 x 60
- ◆ Always renew
- ◆ M10 x 1.25 x 50


Tightening torque: 70 Nm plus an additional 90° 1/4 turn

- ◆ M10 x 1.0 x 20

Tightening torque: 95 Nm

### 7 - Brake carrier with guide pin and protective cap

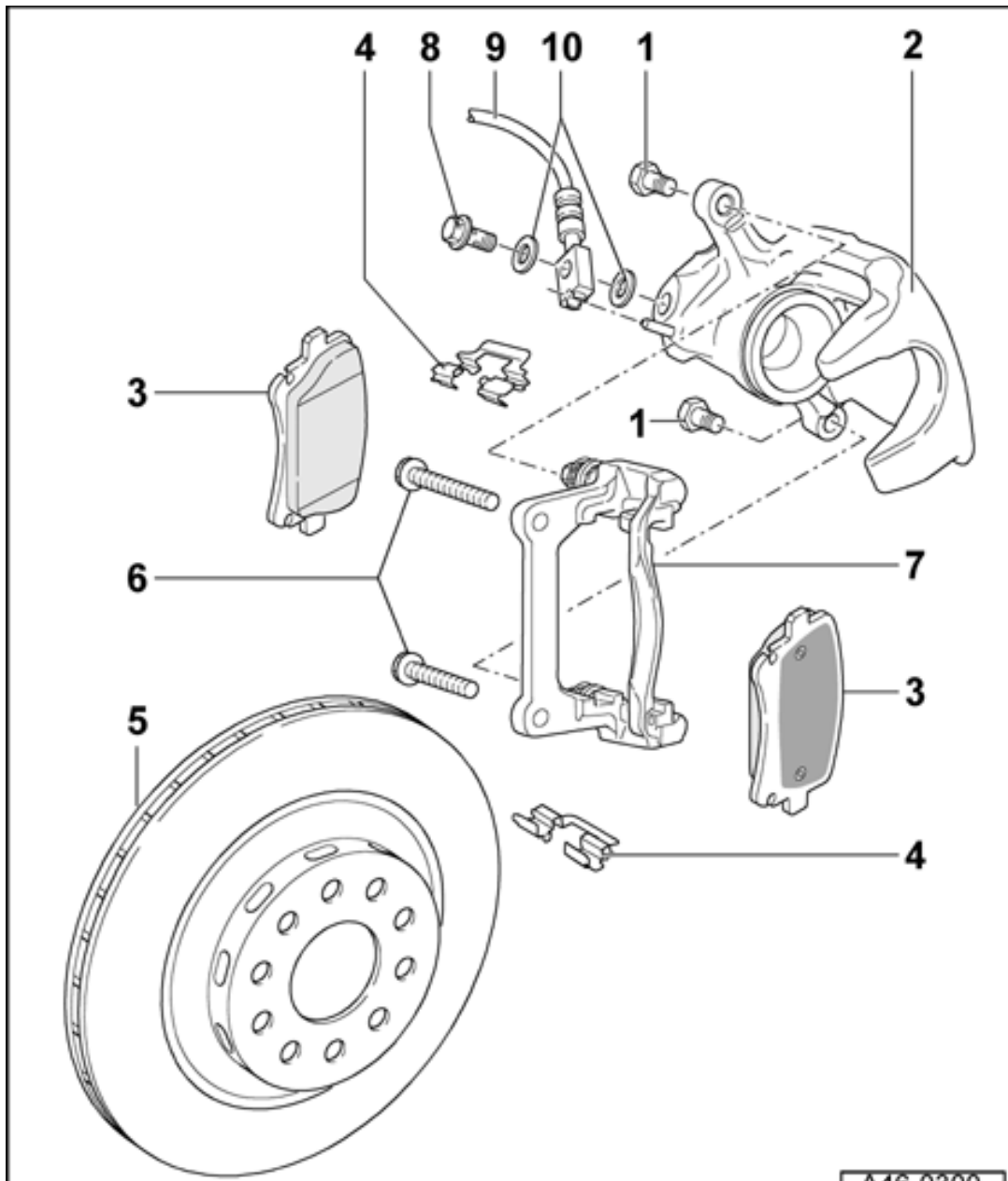
- ◆ Supplied as replacement part assembled with sufficient quantities of grease on guide pins



A46-0300

- ◆ If protective caps or guide pins are damaged, install repair kit. Use grease packet supplied to lubricate guide pins.

**8 - Banjo bolt, 40 Nm**



### 9 - Brake line with banjo union

- ◆ Hose must not be twisted when installed
- ◆ Unbolt from brake carrier when changing pads
- ◆ Do not disconnect brake hose when changing brake pads
- ◆ Servicing brake caliper ⇒ [Page 47-30](#)

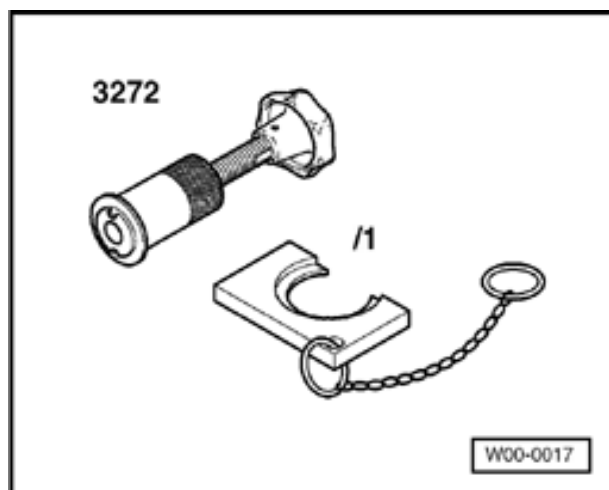
### 10 - Seals

46-61

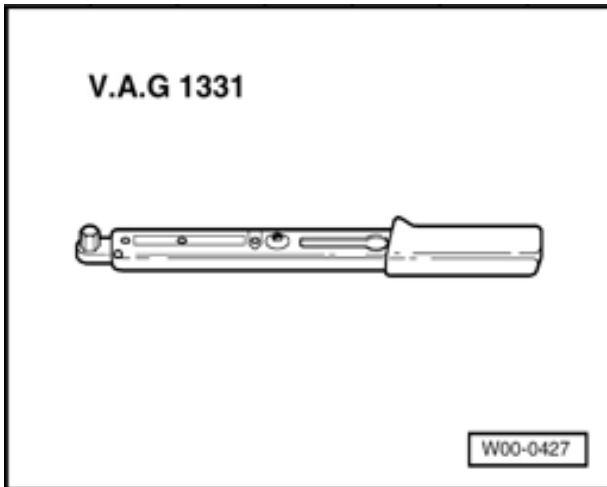


## Brake pads, removing and installing

### Special tools and equipment



- ◆ 3272 Resetting and removing tool



◆ V.A.G 1331 Torque wrench

46-62

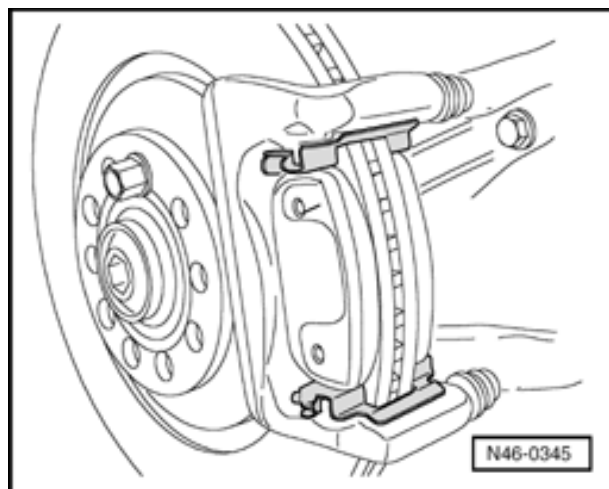


## Removing

### **Note:**

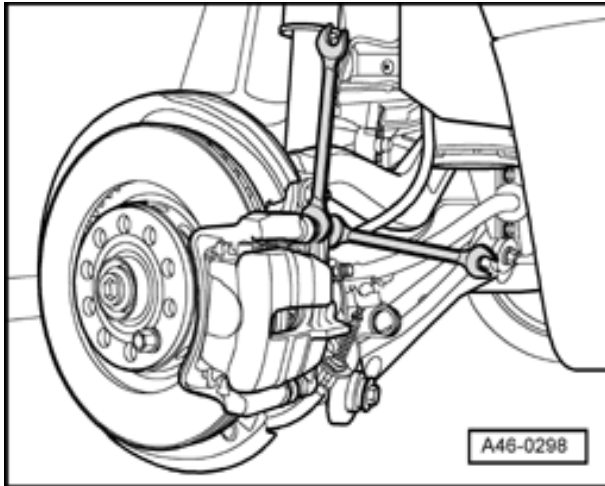
*If re-using brake pads, mark them so that they can be installed in their original positions to prevent uneven braking.*

- Lift vehicle.
- Remove wheels.
- ◀ - Secure brake disc with one wheel bolt.





46-63

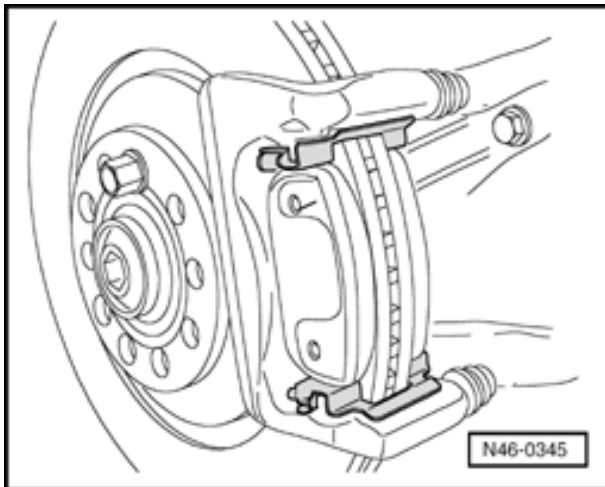


- - Remove bolts from brake caliper housing, counter-holding on guide pins.

**Note:**

*Detach brake cable in order to replace bottom caliper bolt.*

- Take off brake caliper housing, and lay aside so the weight of caliper does not strain or damage brake hose.



- - Remove brake pads.
- Take out retaining springs.
- Clean caliper housing (especially seating surface for pad).

**Note:**

*Brake carrier must be removed in order to replace disc.*

46-64



**Use only methylated spirits for cleaning caliper housing.**

**Note:**

*Press piston back into caliper housing using resetting tool before inserting new brake pads. Before pushing back the piston, draw off brake fluid out of the brake fluid reservoir with a bleeder bottle. Otherwise, especially if reservoir has been topped off, fluid will overflow and cause damage.*

**WARNING!**

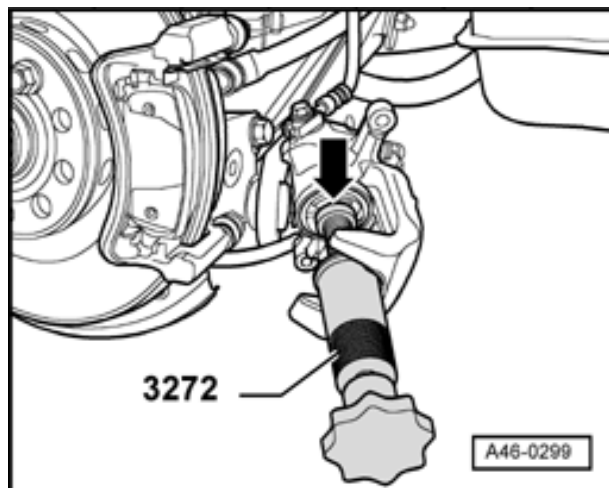
***Brake fluid is poisonous and must on no account be siphoned off by mouth through a hose.***

46-65



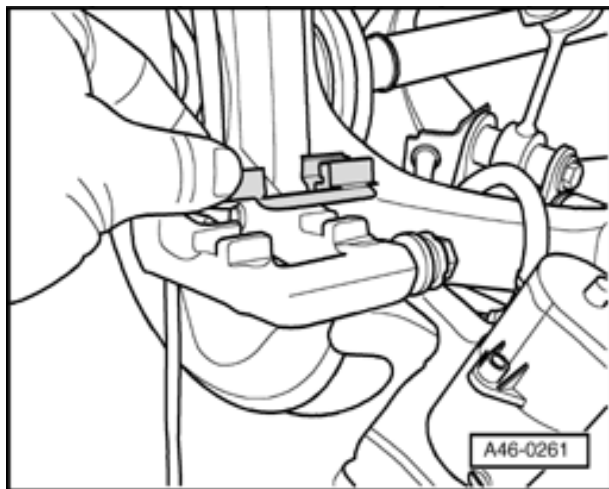
## Installing

**Use only methylated spirits for cleaning caliper housing.**

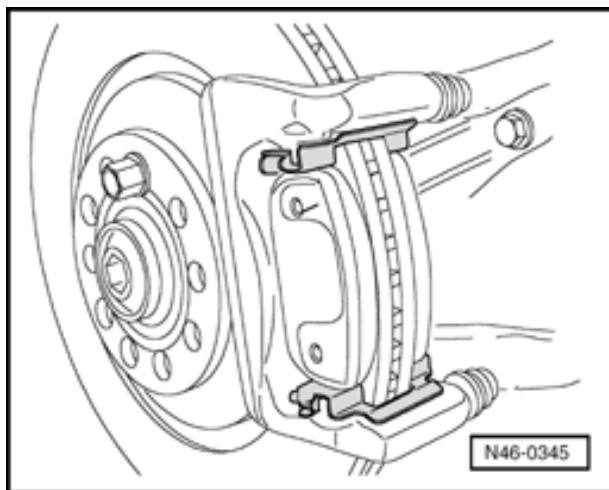


- Screw in piston by turning special tool -3272- clockwise.

46-66

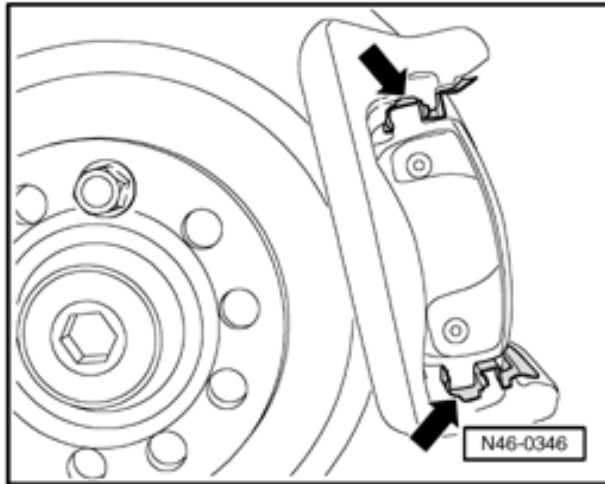


- Install pad retaining springs.



- Install pads.

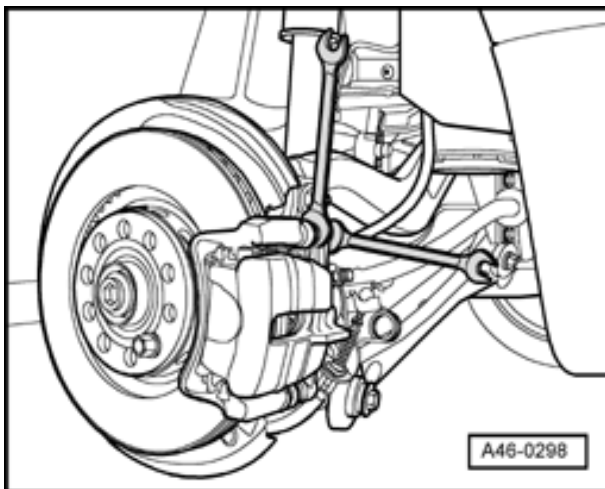
46-67



- ▲ - Ensure pads are located in pad retaining springs (arrows).

**Note:**

- ◆ *The repair kit includes four self-locking hex bolts which must be installed.*



- ▲ - Secure caliper housing with new self-locking bolts.
- Make sure brake hose is not twisted when installed.
- Tightening torque for securing caliper housing: 35 Nm

46-68



**Note:**

◆ *After replacing brake pads and before moving vehicle, always depress brake pedal several times firmly to properly seat brake pads in their normal operating position.*

- Install wheels

Tightening torque 120 Nm

- Check brake fluid level and top off if necessary.



Vehicle

System

Repair Group

Previous Topic

Next Topic

Technical  
Bulletins

Wiring Diagrams

Warnings &  
Cautions

Print

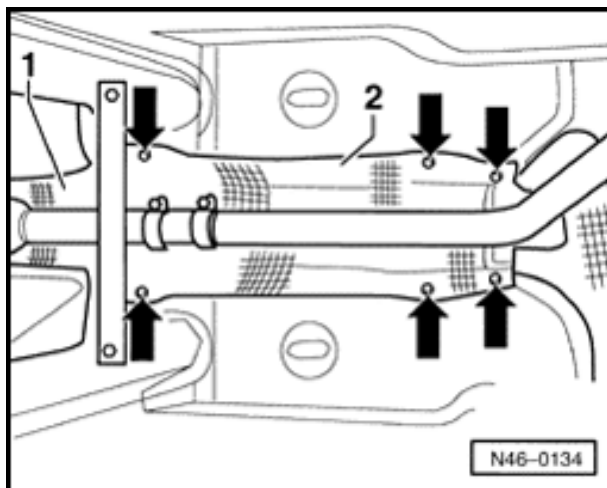
## Parking brake cables, removing and installing

### Front wheel drive vehicles

#### Note:

*Parking brake cable adjusting components are located in the tunnel on the underside of vehicle.*

### Removing

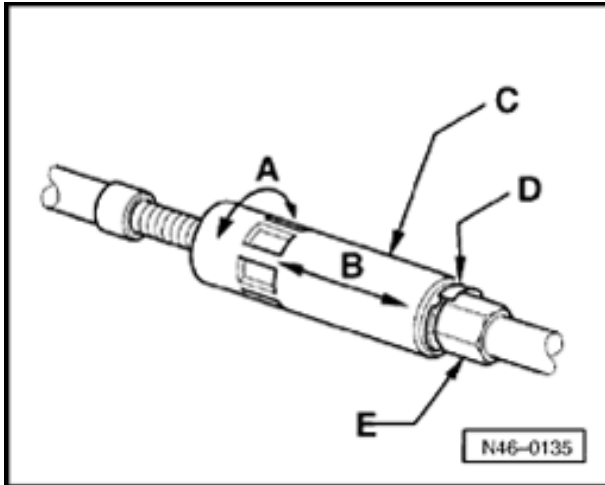


- Remove heat shield - 1-.
- Remove retaining nuts (arrows) from heat shield -2- and slide heat shield forward.

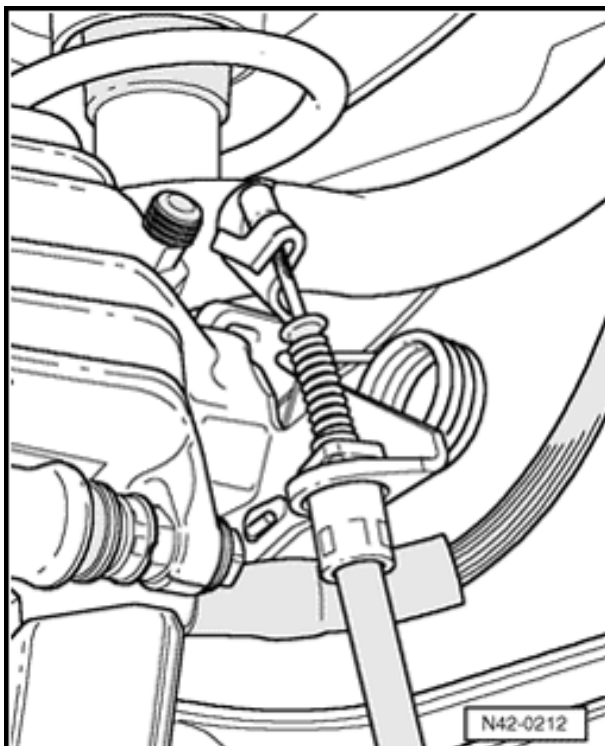
Search

Advanced  
Search

46-70



- ▲ - Remove locking clip - D-.
- Counter-hold hex -E- using 13 mm open end wrench and turn adjusting nut -C- in until stop.
- Slide cable adjuster together.



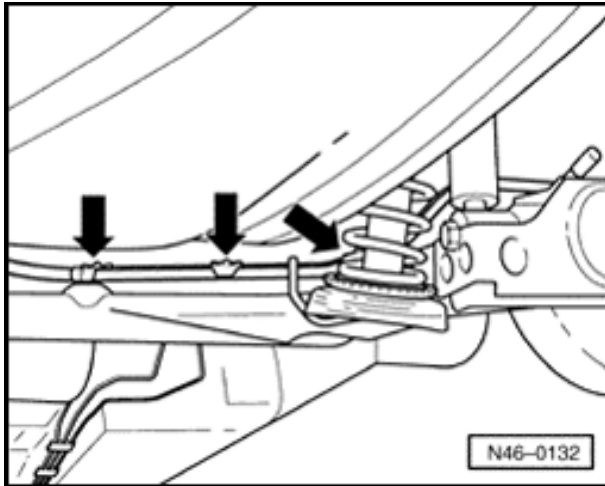
- ▲ - Disconnect parking brake cables from brake calipers.

**Note:**

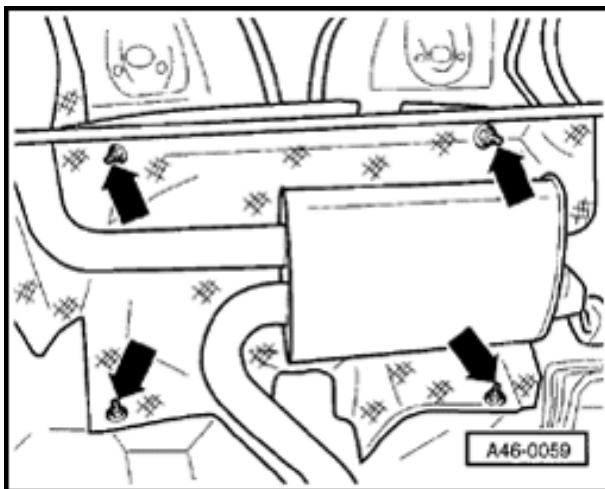
*Be careful not to damage parking brake boot when removing and installing.*



46-71

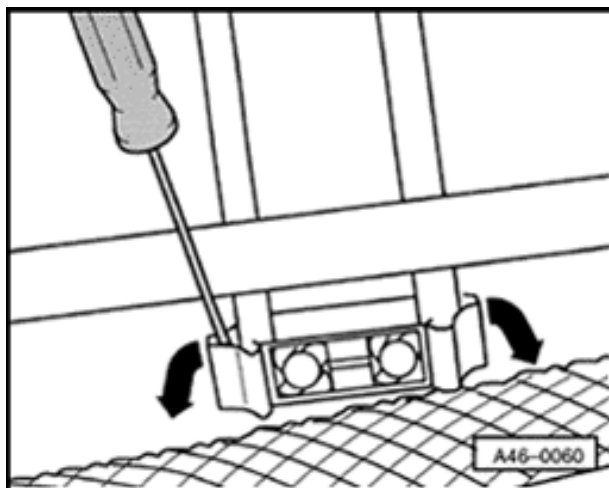


- ▲ - Remove retainers from parking brake cable on rear axle beam.

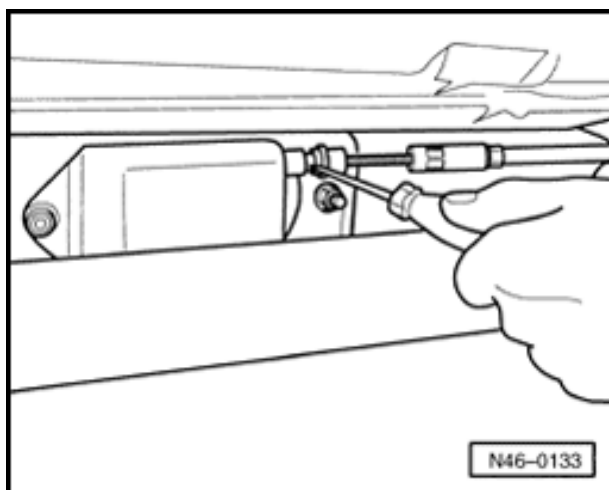


- ▲ - Disconnect heat shield from area of rear muffler and move to one side.

46-72

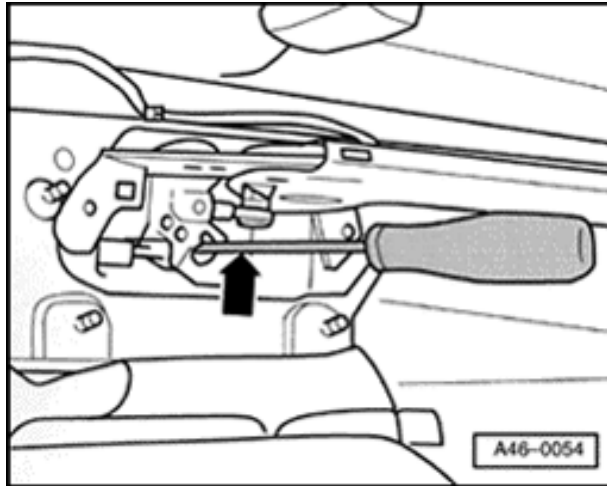


- ◀ - Open retainer and remove parking brake cable.



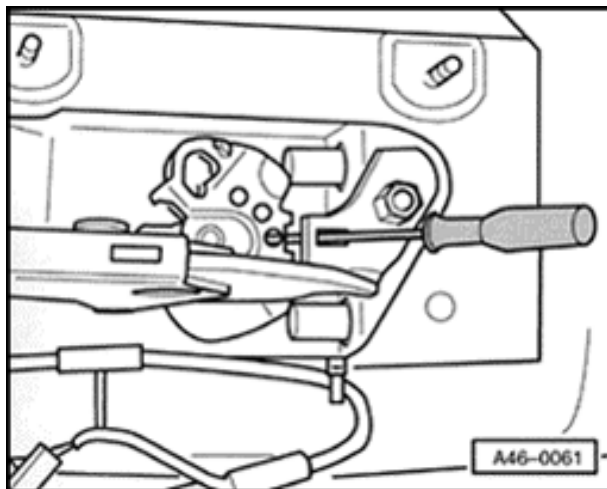
- ◀ - Use a screwdriver to pry parking brake cable from console.
  - Remove center console extension.
- ⇒ [Repair Manual, Body Interior, Repair Group 68](#)

46-73



- ▲ - Using screwdriver, press parking brake cable in direction of parking brake lever and push ball out of retainer.
- Remove parking brake cable.

### Installing



- ▲ - Remove any plastic components on compensator; they do not need to be re-installed.
- Use number 2 screwdriver to prevent compensator from turning.
- Install ball head in compensator via console.
  - Parking brake cable must engage in console
- Secure parking brake cables to rear axle beam and install in retainers on underbody.
- Adjust parking brake ⇒ [Page 46-80](#).
- Install center console extension.

⇒ [\*Repair Manual, Body Interior, Repair Group 68\*](#)

46-74

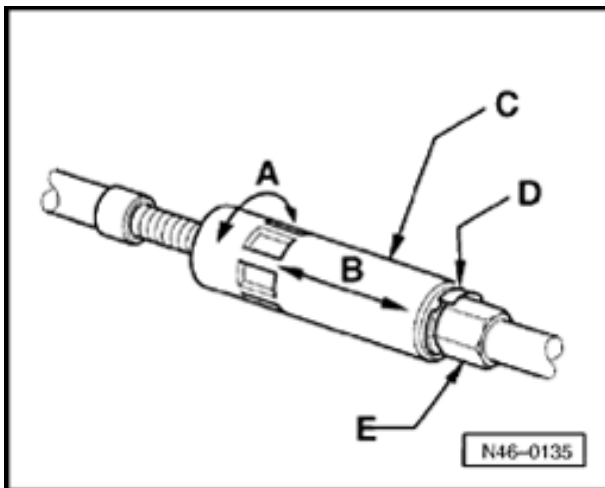


## All wheel drive vehicles

### Note:

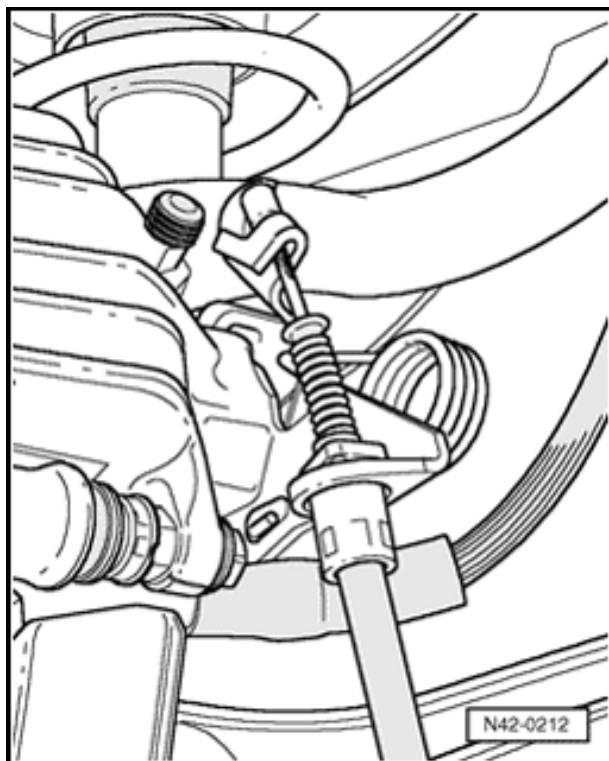
*Parking brake cable adjusting components are located in front of rear lower control arms.*

### Removing



- Remove locking component - D-
- Counter-hold hex -E- using 13 mm open end wrench and turn adjusting nut -C- in until stop.
- Slide cable adjuster together.

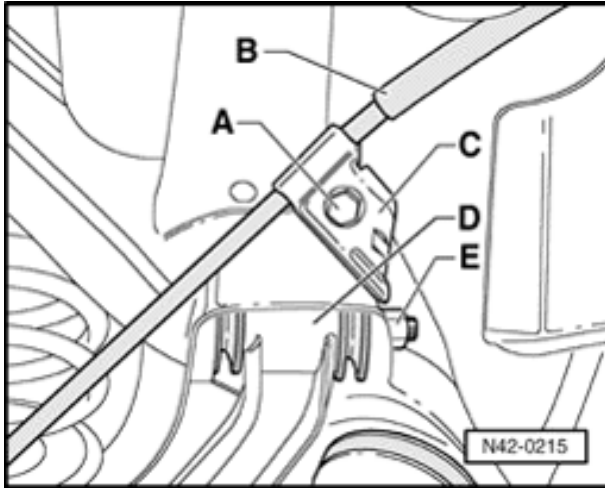
46-75



- ◀ - Disconnect parking brake cables from brake calipers.

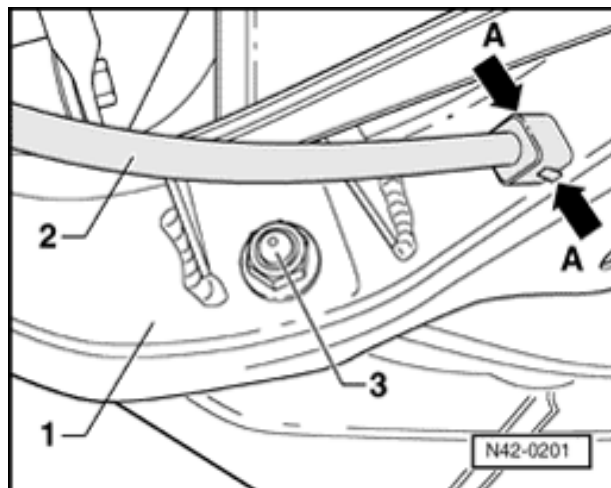
**Note:**

*Be careful not to damage parking brake boot when removing and installing.*

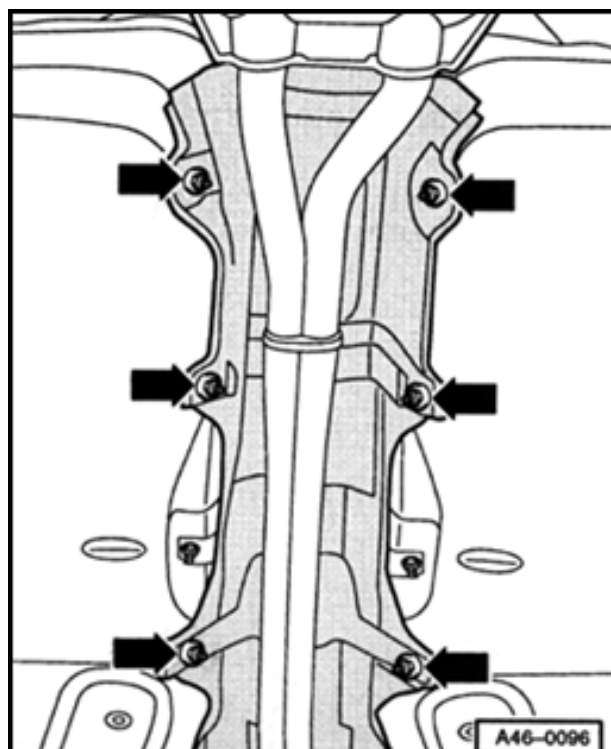


- Loosen bolt - A-
- Remove parking brake cables from retainer.

46-76



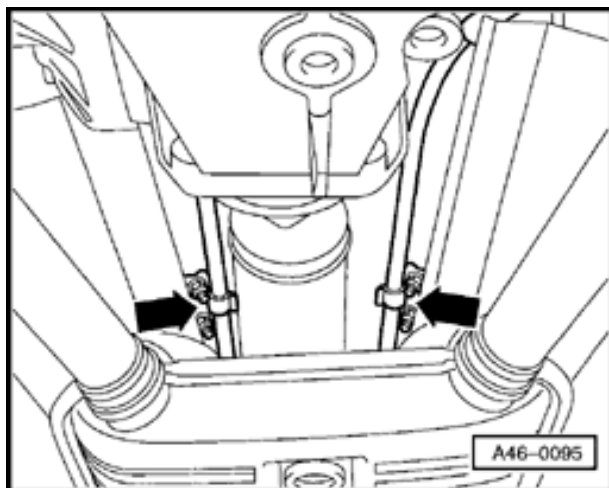
- Press tabs -A- together and remove parking brake cable from control arm.



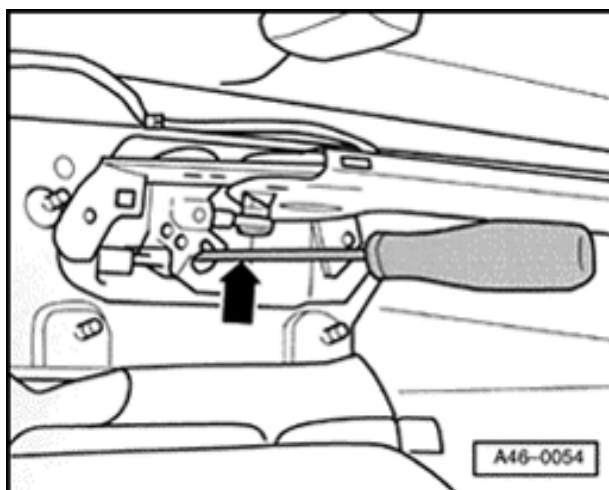
- Remove heat shield.



46-77

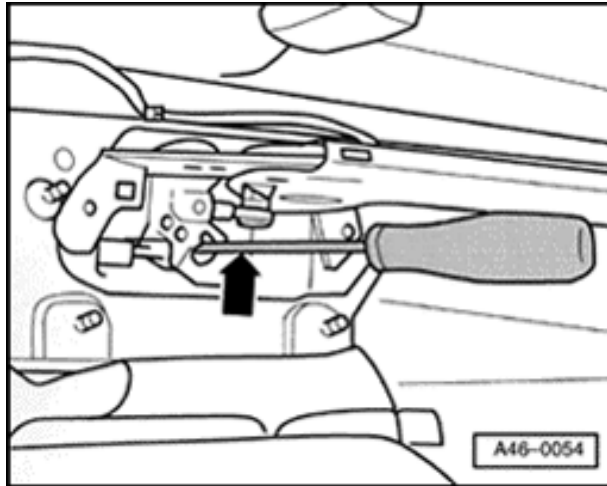


- ▲ - Loosen nuts on both metal retainers until parking brake cables can be removed.



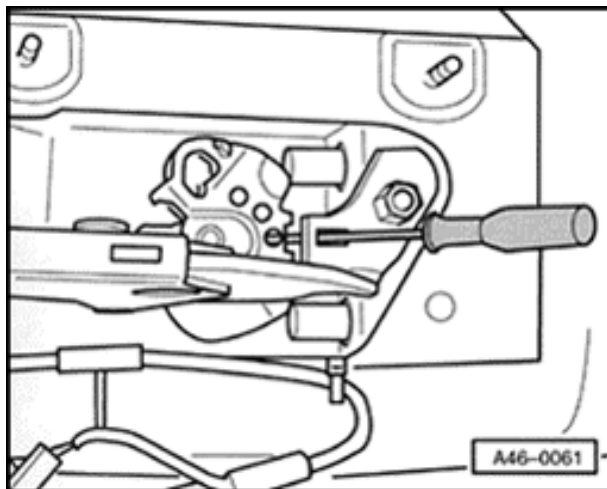
- ▲ - Use a screwdriver to pry parking brake cable from console.
  - Remove center console extension.
- ⇒ [Repair Manual, Body Interior, Repair Group 68](#)

46-78



- Using screwdriver, press parking brake cable in direction of parking brake lever and push ball out of retainer.
- Remove parking brake cable.

### Installing



- Remove any plastic components on compensator; they do not need to be re-installed.
- Use number 2 screwdriver to prevent compensator from turning.
- Install ball head in compensator via console.
- Parking brake cable must engage in console.
- Secure parking brake cables to rear axle beam and install in metal retainers in tunnel.
- Adjust parking brake ⇒ [Page 46-80](#).

- Install center console extension.

⇒ [\*Repair Manual, Body Interior, Repair Group 68\*](#)



Vehicle

System

Repair Group

Previous Topic

Next Topic

Technical  
Bulletins

Wiring Diagrams

Warnings &  
Cautions

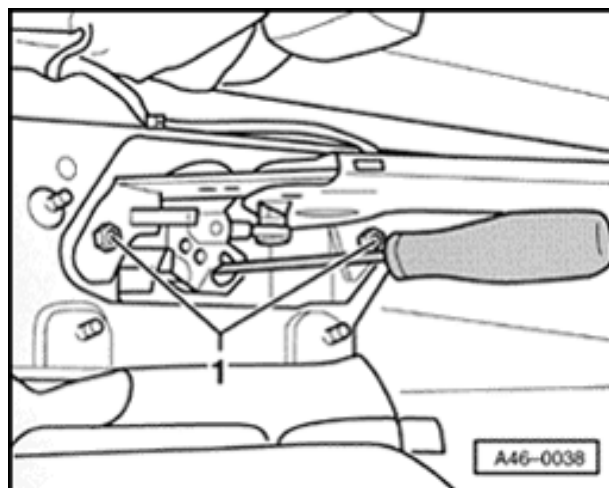
Print

## Parking brake lever, removing and installing

### Removing

- Remove center console extension.

⇒ [Repair Manual, Body Interior, Repair Group 68](#)



- Remove hex-nuts - 1-.
- Press parking brake cable inward using screwdriver and remove parking brake lever.

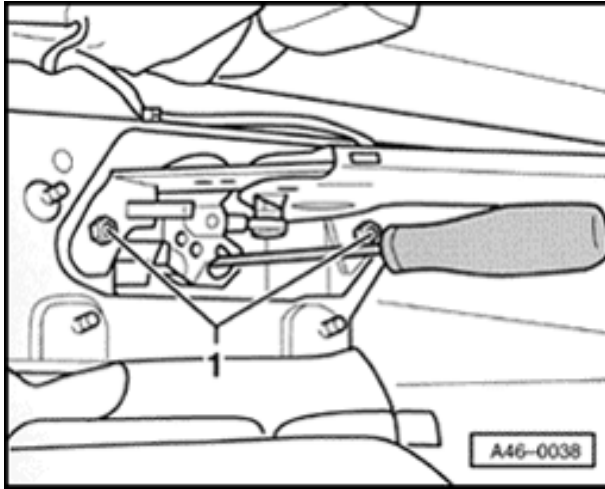
### Installing

- Install parking brake cable in compensator.

Search

Advanced  
Search

eBahn®  
Version: 2.5r01sp0003



A

- Tighten nuts -1- to 25 Nm.
  - Adjust parking brake ⇒ [Page 46-80](#) .
  - Install center console extension.
- ⇒ [Repair Manual, Body Interior, Repair Group 68](#)

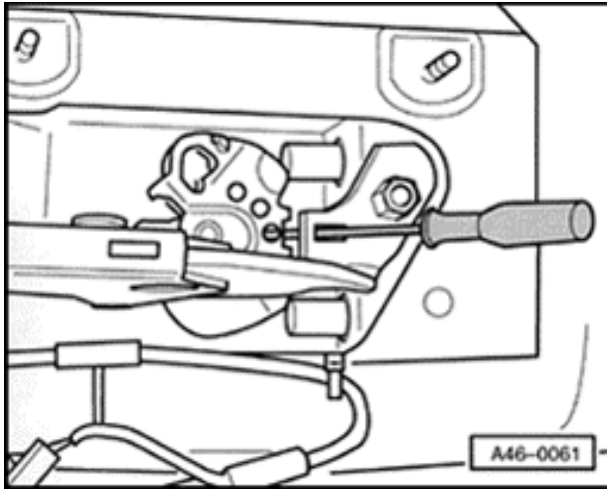


## Parking brake, adjusting

### **Note:**

- ◆ *Because the rear brakes are automatically self-adjusting, readjusting the parking brake is usually not necessary. Adjustment is only necessary after replacing parking brake cables, brake calipers, brake pads and brake discs.*
  
- ◆ *Hydraulic brake system must be free of air and functioning properly.*
  
- Depress brake pedal firmly at least once.
  
- Make sure parking brake lever in released position.
  
- Remove rear air vent from center console.

⇒ [Repair Manual, Body Interior, Repair Group 68](#)



A

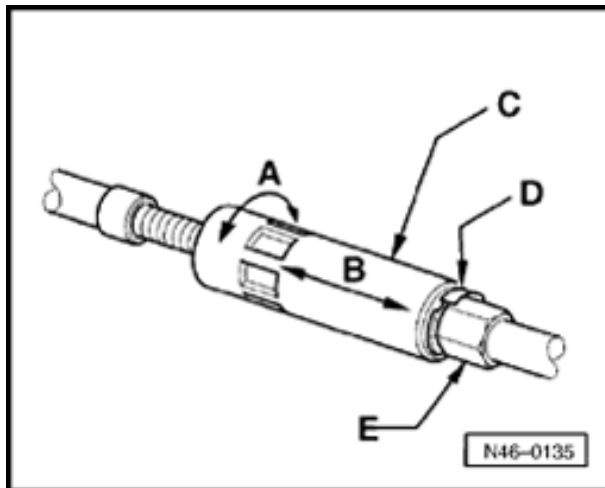
- Remove any plastic components on compensator; they do not need to be re-installed.
- Use screwdriver to prevent compensator from turning (center console not shown in illustration).

46-81



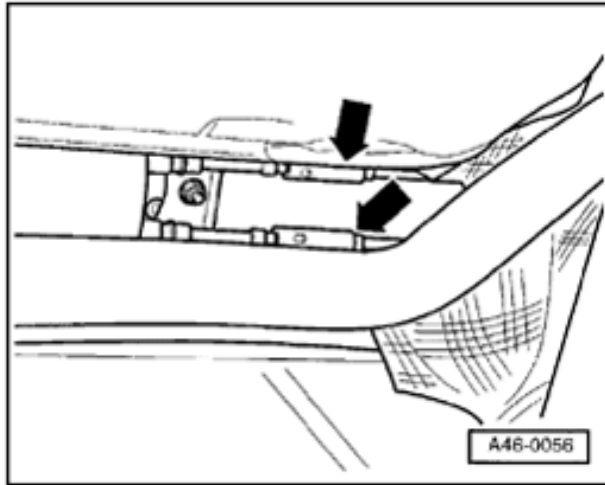
**Note:**

- ◆ *In All Wheel Drive (AWD) vehicles, parking brake cable adjusting components are located in front of rear lower control arms.*
- ◆ *For vehicles with Front Wheel Drive (FWD), they are located in the tunnel on the underside of vehicle.*



- Remove locking component - D-.
- Counter-hold hex -E- using 13 mm open end wrench and turn adjusting nut -C- in until stop.
- Slide cable adjuster -B- together.
- Unscrew adjusting nut until slot for locking component is visible.
- Install locking component.



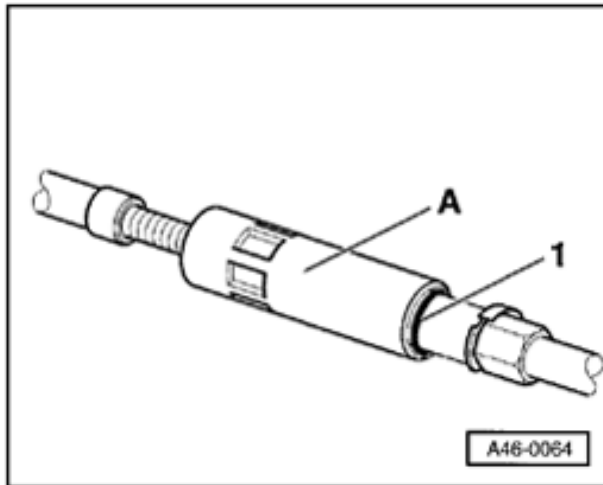


A

- Pull both cable sleeve adjusters apart simultaneously until cables are tensioned. Lever must not lift off at brake caliper during this process.
- Remove screwdriver from compensator and apply parking brake firmly 3 times.

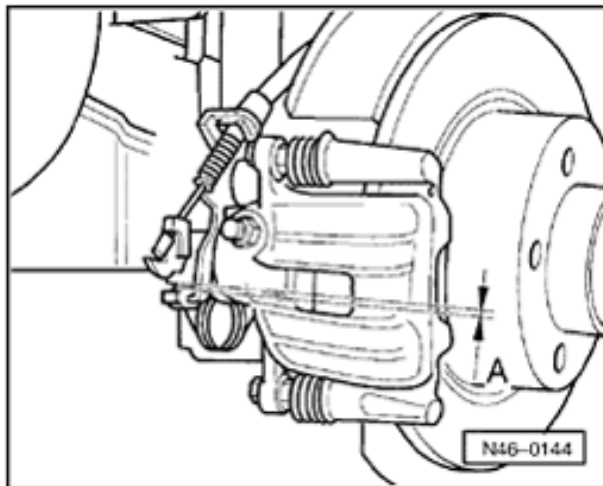


**Note:**



⚡ *Colored O-ring -1- must not be visible following successful installation. This ensures that the parking brake cable adjustment mechanism is sufficiently protected against dirt and water spray.*

- Check parking brake tension and adjust fine adjustment -A- in or out, if necessary ...



- ⚡
- ... until lever lifts slightly from brake caliper.
  - Note dimension -A-. Gap should be visible, but not be wider than 1.5 mm.