



Vehicle

System

Repair Group

Previous Topic

Next Topic

Technical
Bulletins

Wiring Diagrams

Warnings &
Cautions

Print

Storage compartments, covers and trim parts

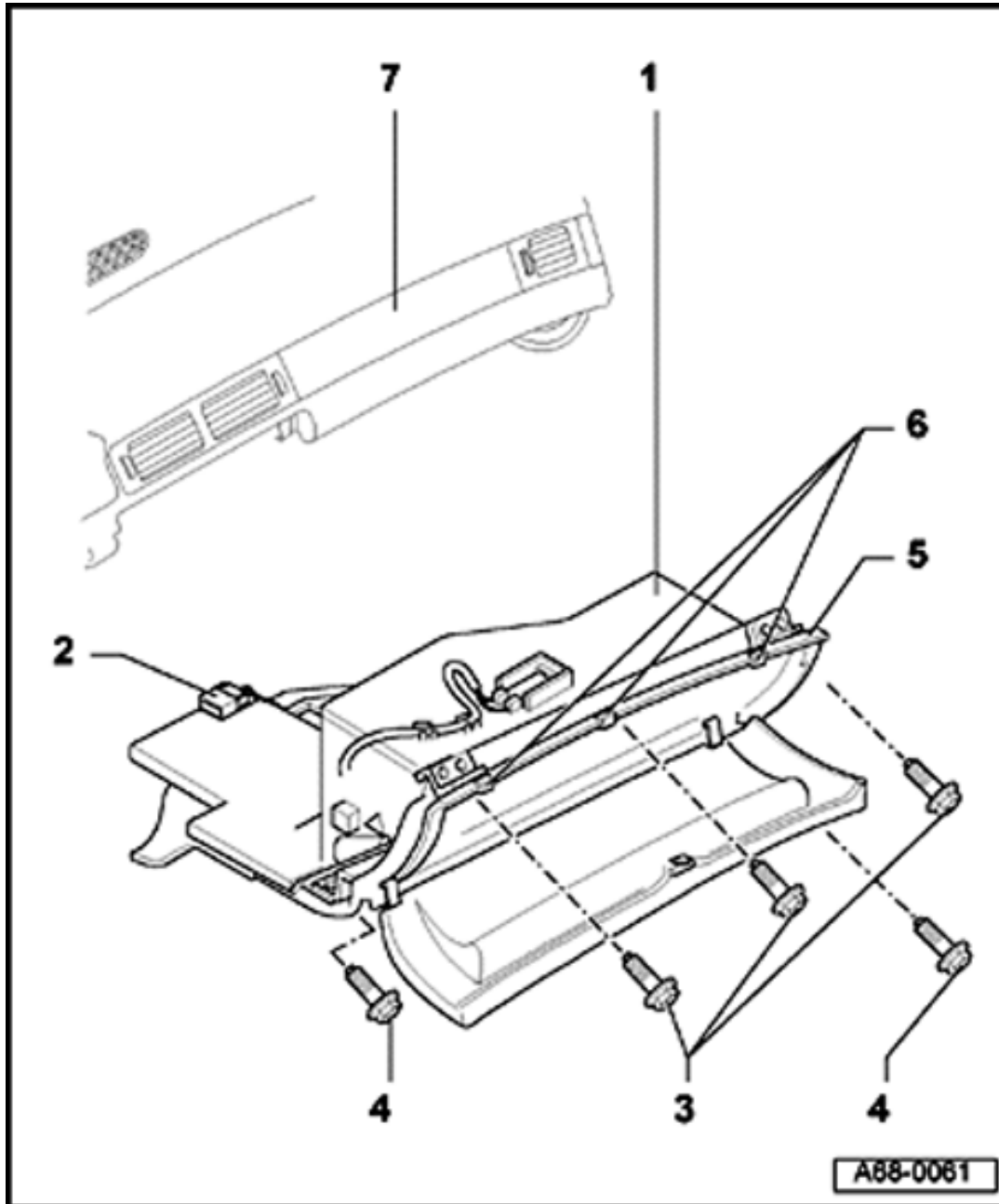
Glove box, removing and installing

1 - Glove box

Removing

- Open glove box lid. Remove screws -3- (3x).
- Remove screws -4- (2x).
- Remove glove box downward.
- Disconnect connector -2-.

Installing



Search

Advanced
Search

eBahn®
Version: 2.5r01sp0003

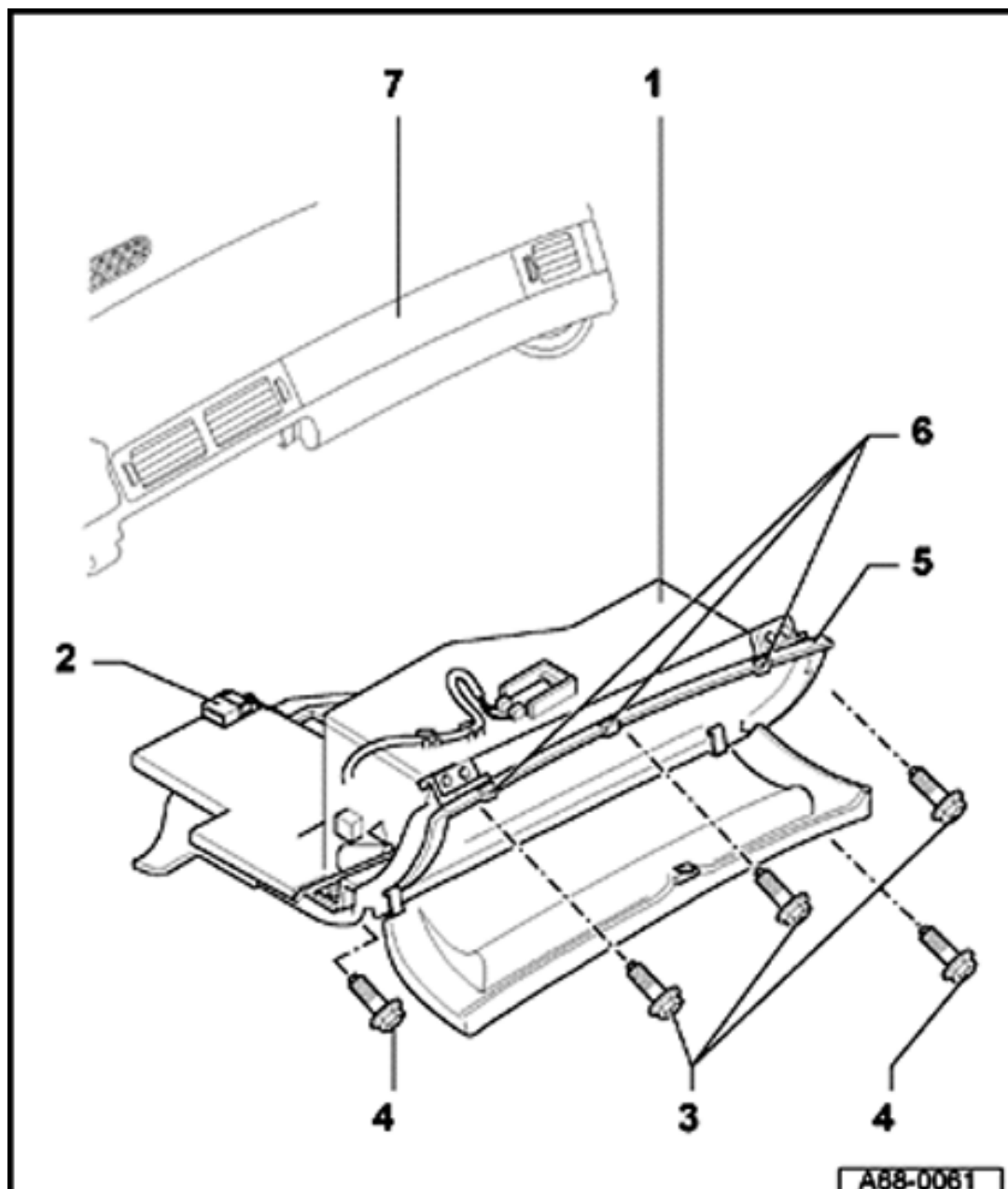
- Position strip -5-
with rubber studs
- 6- against
instrument panel -
- 7- from
underneath and
install glove box.

2 - Connector

3 - Screws (3x)

- ◆ Tightening torque: 5
Nm (44 in. lb)

68-2



4 - Screws (2x)

◆ Tightening torque: 5
Nm (44 in. lb)

5 - Strip

6 - Rubber stops

7 - Instrument panel

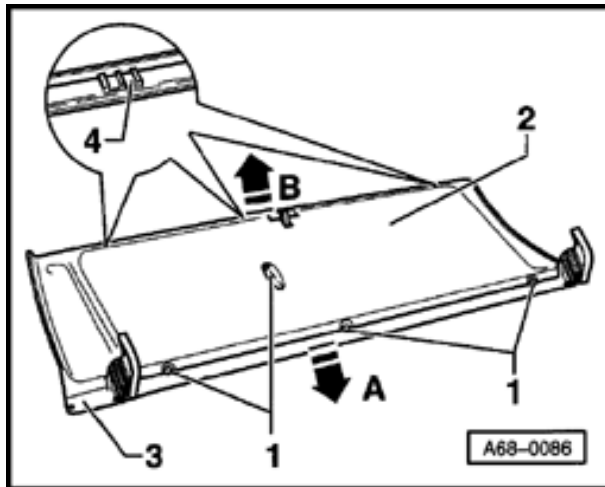
A88-0081

A88-0061

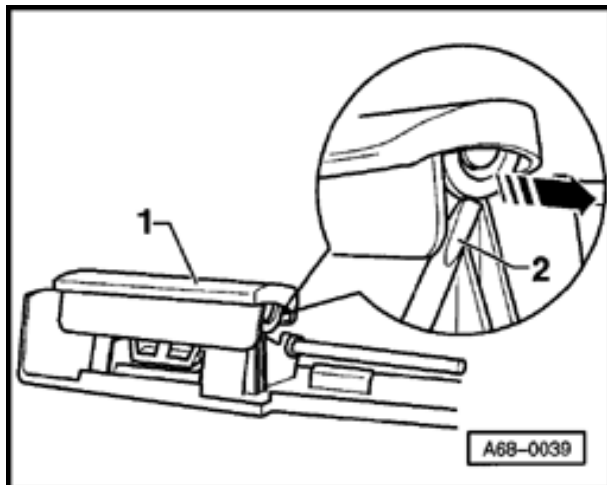


Glove box lock, removing and installing

- Remove glove box lid ⇒ [Page 68-5](#)

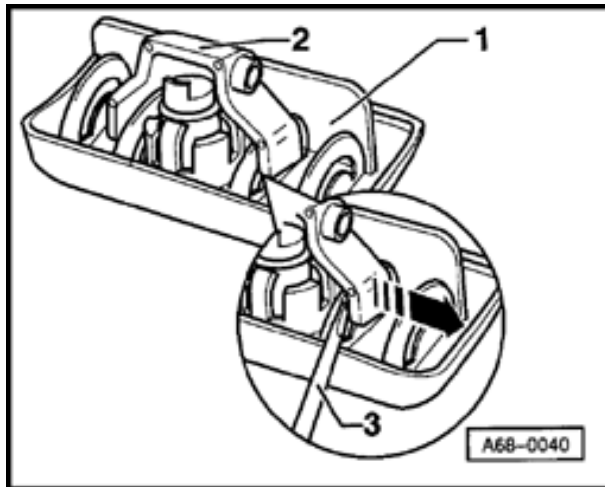


- Remove screw -1- (4x).
Tightening torque: 1 Nm (9 in. lb)
- Use screwdriver to pry open glove box lid -3- slightly on inside (at arrow -A-).
- Pull trim panel -2- approx. 15 mm out of retainers -4- (3x) in direction of arrow -A-.
- Lift trim panel -2- approx. 15 mm and detach trim panel -2- from glove box lid -3-.



- Use screwdriver -2- to pry off glove box opening mechanism -1- on left and right in direction of arrow.
- Remove glove box opening mechanism -1-.

68-4

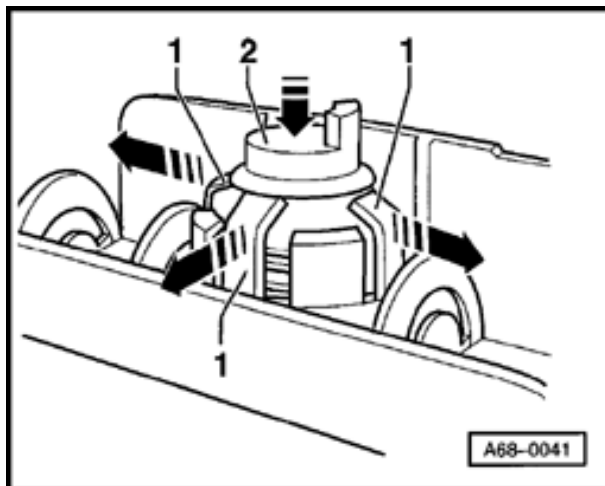


- Use screwdriver -3- to pry bracket -2- on left and right side out of glove box opening mechanism -1- in direction of arrow.

Note:

Lock cylinder can only be removed with key inserted.

Removing



- Use screwdriver to carefully pry off retaining lugs -1- (4x) in direction of arrow and at the same time press lock cylinder -2- in direction of arrow.

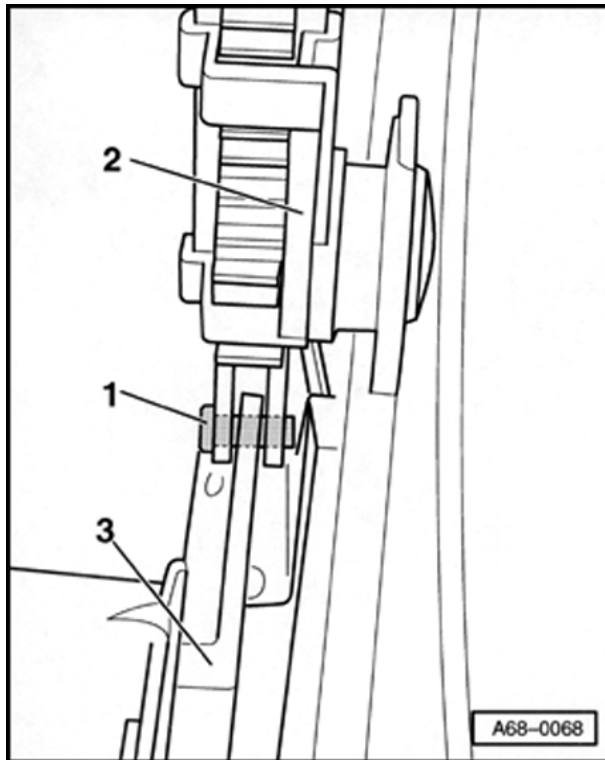
Installing

- With key inserted, press in lock cylinder until all retaining lugs engage.



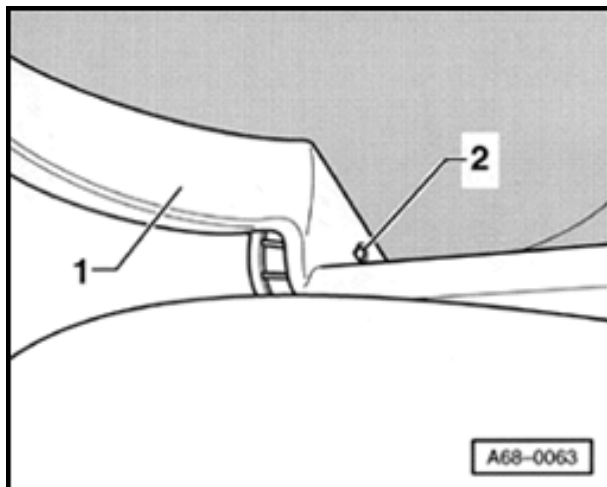
Glove box lid, removing and installing

- Remove glove box ⇒ [Page 68-1](#).



- Press out pin -1- at connection between damping mechanism -2- and glove box lid -3-.
- Open glove box lid.

Holes are provided at the hinges on the inside of the glove box on each side.

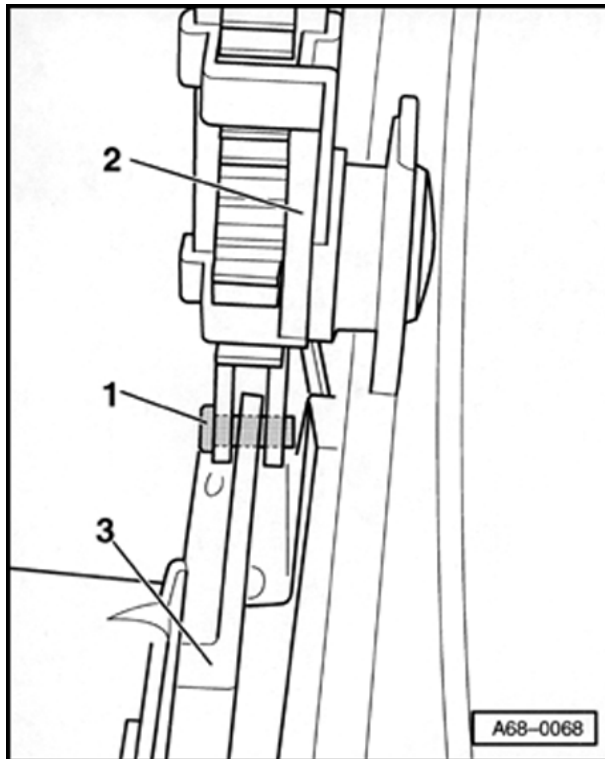


- Use 4 mm punch to drive pin -2- on left and right out of glove box -1-.
- Remove glove box lid.

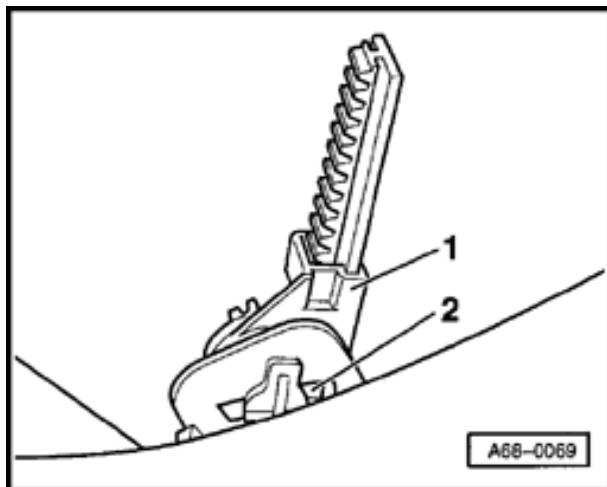


Glove box lid damping mechanism, removing

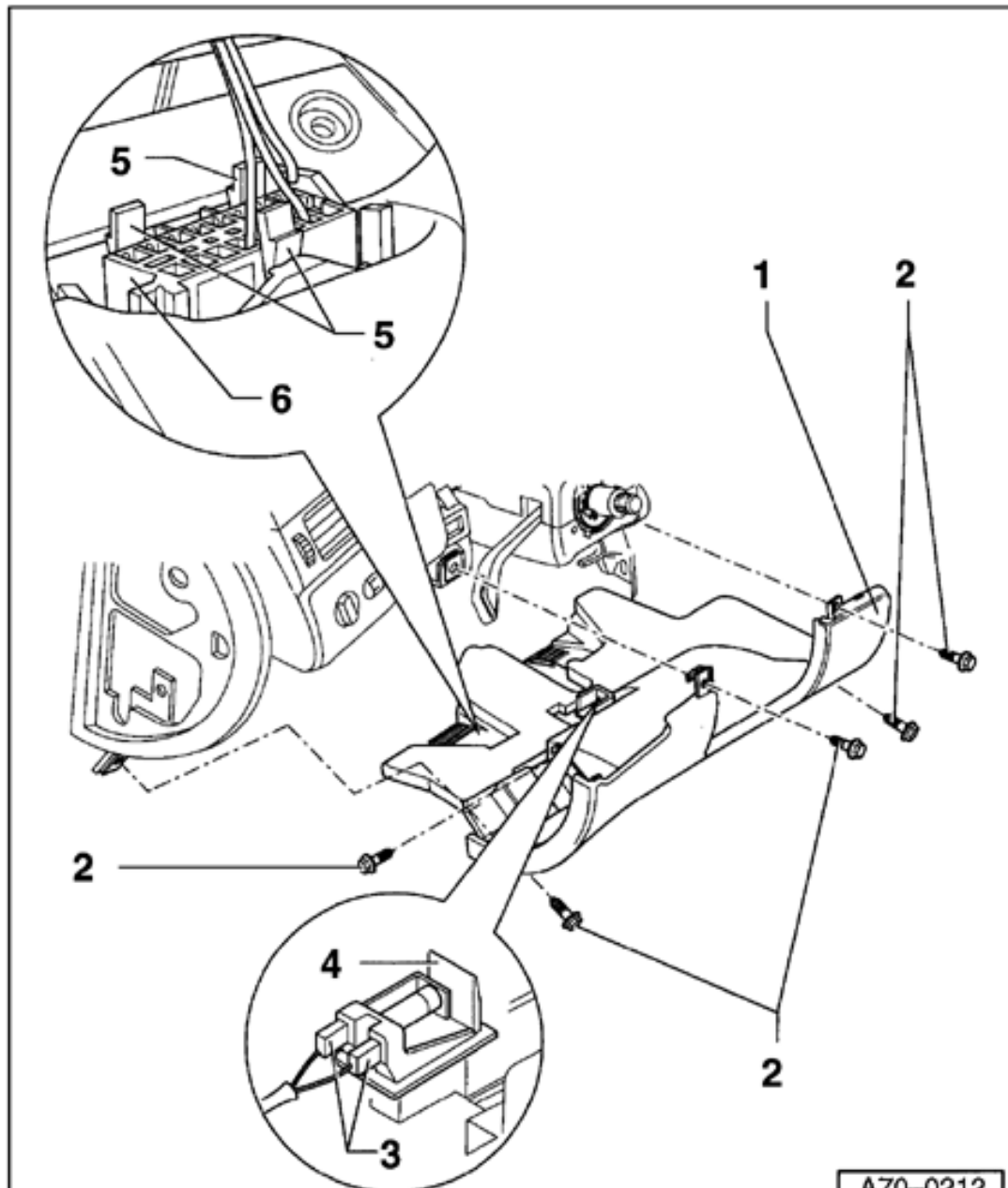
- Remove glove box ⇒ [Page 68-1](#).



- Press out pin -1- at connection between damping mechanism -2- and glove box lid -3- in direction of arrow.



- Turn damping mechanism for glove box lid -1- through approx. 90 ° into opening -2- and remove damping mechanism.



A70-0212

Driver's storage compartment, removing

1 - Driver's storage compartment

- Remove instrument cluster molding ⇒ [Page 68-8](#)
- Unclip end trim of instrument panel on driver's side ⇒ [Page 70-58](#)
- Remove bolts -2- (5x).
- Set down driver's storage compartment.
- Disconnect connector -3- from footwell light -4-.



- Unclip Data Link Connector (DLC) -
6- by squeezing together the tabs -
5- (3x).

2 - Bolts (5x)

3 - Connector

4 - Footwell light

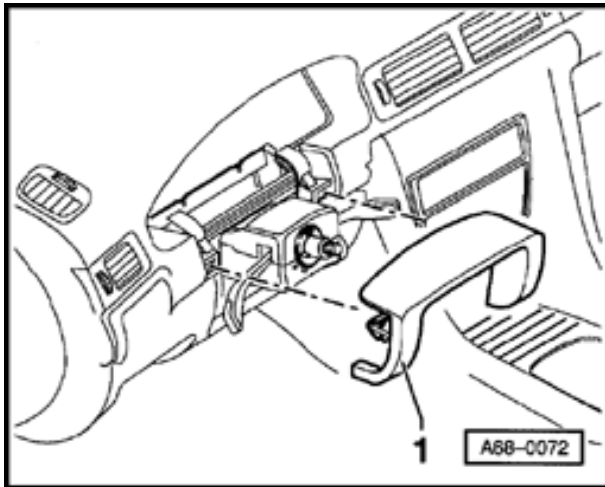
5 - Tabs

6 - Data Link Connector (DLC)

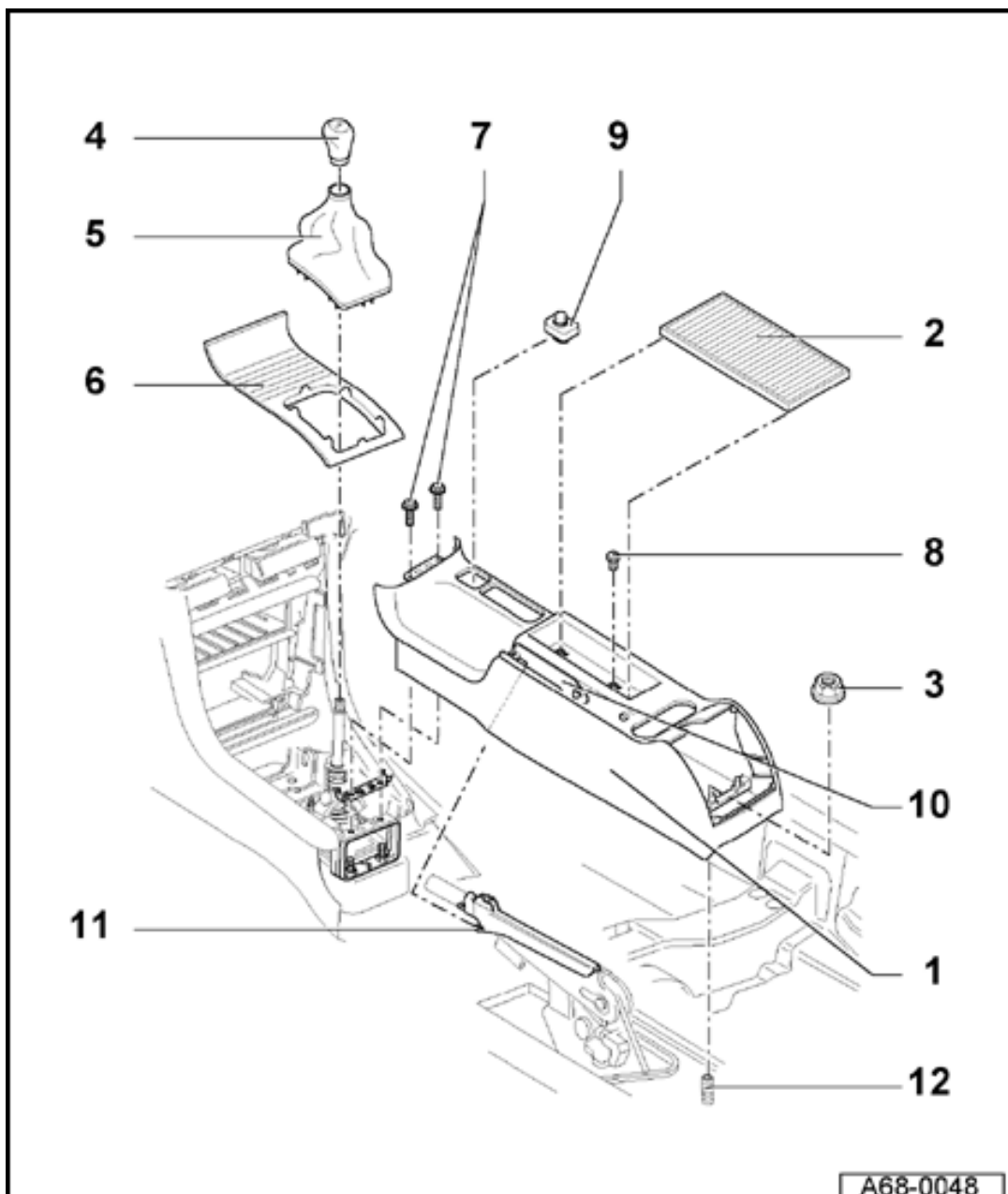
68-8



Instrument cluster molding, removing



- A - Pull out instrument cluster molding -1- to rear.



A68-0048

Center console (rear section), removing and installing

1 - Rear section of center console

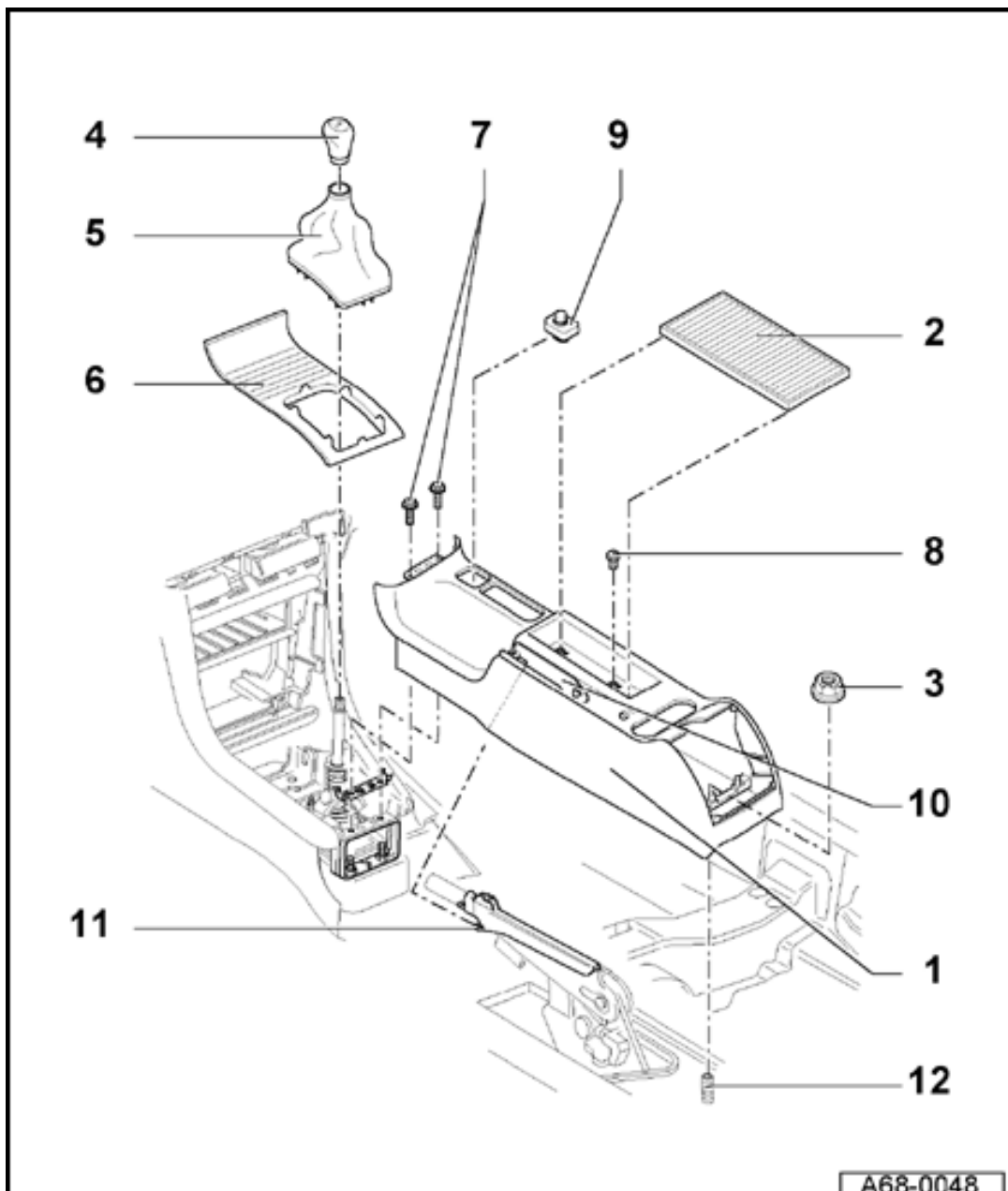
Removing

- Remove rear air vent and rear air-duct connecting piece ⇒ [Page 68-19](#)
- If necessary, remove center armrest ⇒ [Page 68-21](#) .
- Remove nut - 3-.
- Remove mat lining -2- upward.
- Remove bolt - 8-.

◆ With manual transmission:

A68-0048

- Twist off shifter knob -4-.
- Unclip protective boot -5- upward.
- Unclip center console insert -6- upward.



A68-0048

◆ With automatic transmission:

- Unclip center console insert -6- upward.
- Remove bolts -7- (2x).
- Remove parking brake pry trim ⇒ [Page 68-15](#)
- Raise rear section of center console -1- at front and detach connector for mirror adjustment switch -9-
- Pull parking brake pry up as far as it will go.
- Unfasten trim -10- from retainer -11- on parking brake pry.

A68-0048

- Raise rear section of center console -1- over stud -12- and pull center console to rear.

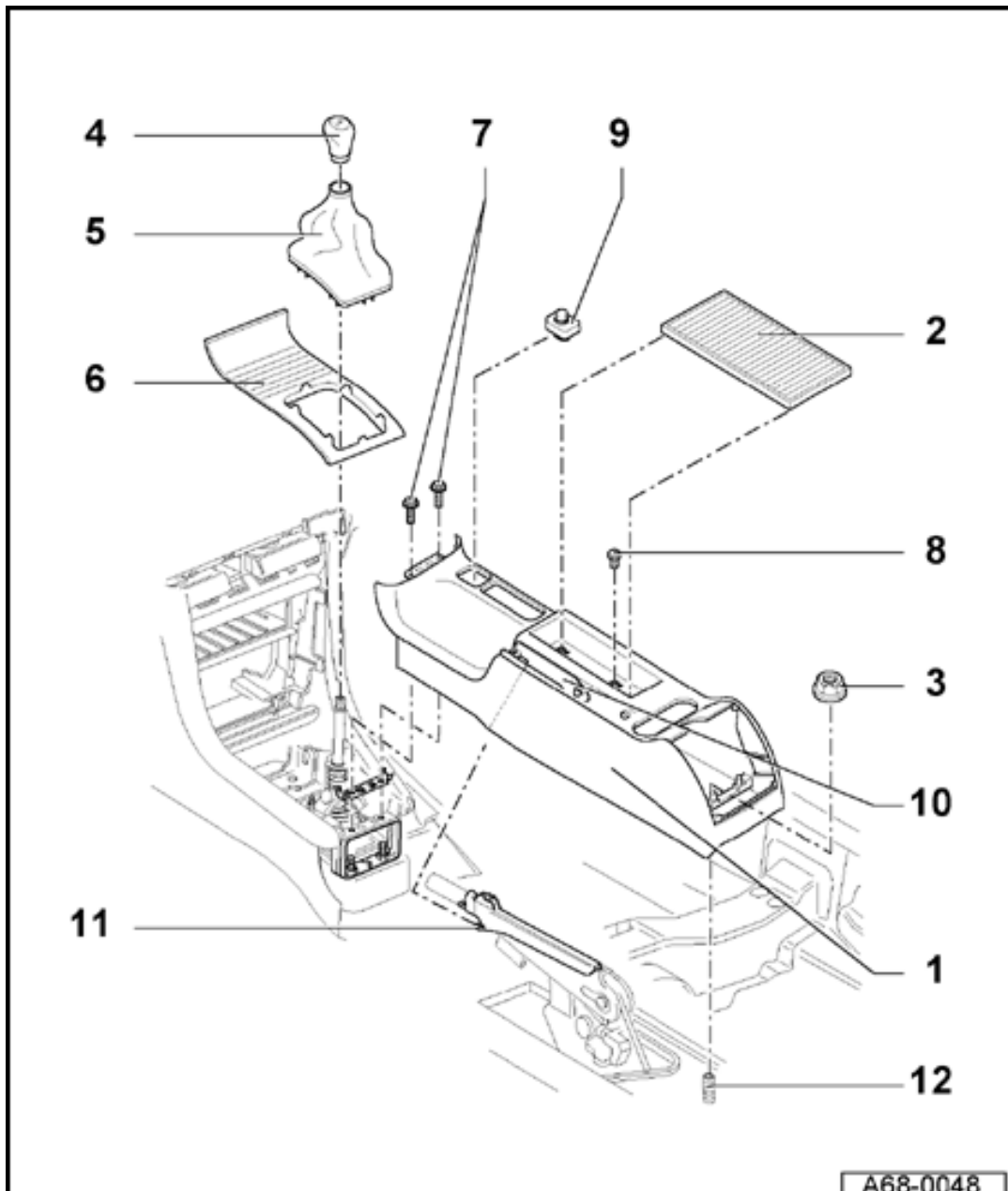
- Lift out rear section of center console -1- forward over parking brake pry.

Installing

- Install trim -10- at retainer -11- on parking brake pry.

- Make sure air ducts are properly installed when installing rear section of center console -1-.

2 - Mat lining



A68-0048

3 - Nut

- ◆ Tightening torque:
10 Nm (7 ft lb)

4 - Shifter knob

- ◆ Twisted
on

5 - Protective boot

- ◆ Unclip
upward
- ◆ Pay attention to
position of locking
clips when installing

**6 - Center console
insert**

7 - Screws (2x)

- ◆ Tightening torque: 5
Nm (44 in. lb)

8 - Screw (1x)

- ◆ Tightening torque: 5
Nm (44 in. lb)

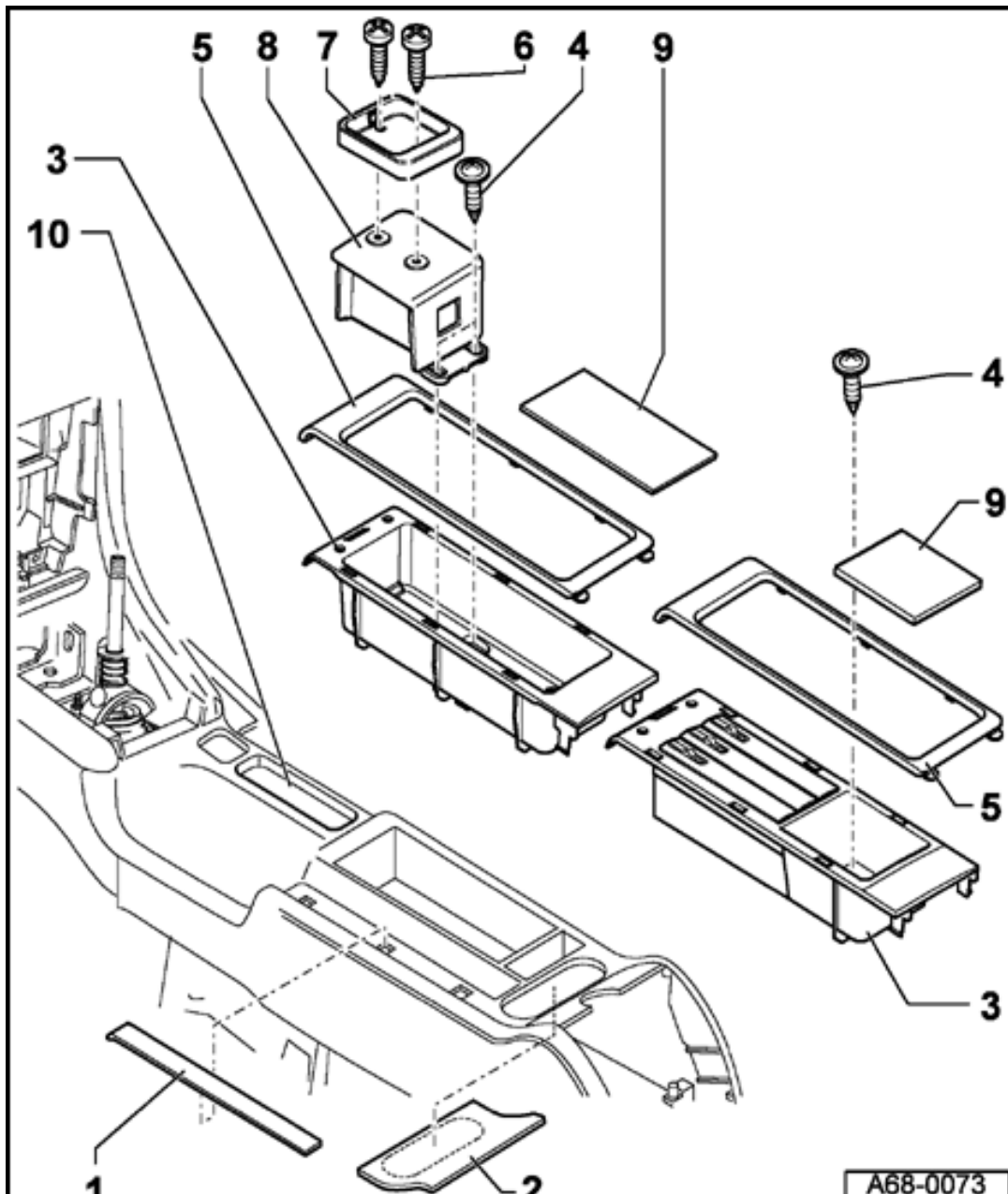
**9 - Mirror adjustment
switch**

A68-0048

**10 - Parking brake pry
trim**

11 - Retainer tab

12 - Stud



Side trim strip, rear trim panel and tray, removing

- ◆ Side trim strip
 - Unclip side trim strip -1- upward.
- ◆ Rear trim panel
 - Vehicles with center armrest:
 - Remove center armrest ⇒ [Page 68-21](#) .
 - Unclip rear trim panel -2- upward.
 - Vehicles without center armrest:
 - Unclip rear trim panel -2- upward.
- ◆ Tray trim panel



- Unclip tray trim panel -5- upward.

- ◆ Tray without cassette box

- Remove mat lining -9-.

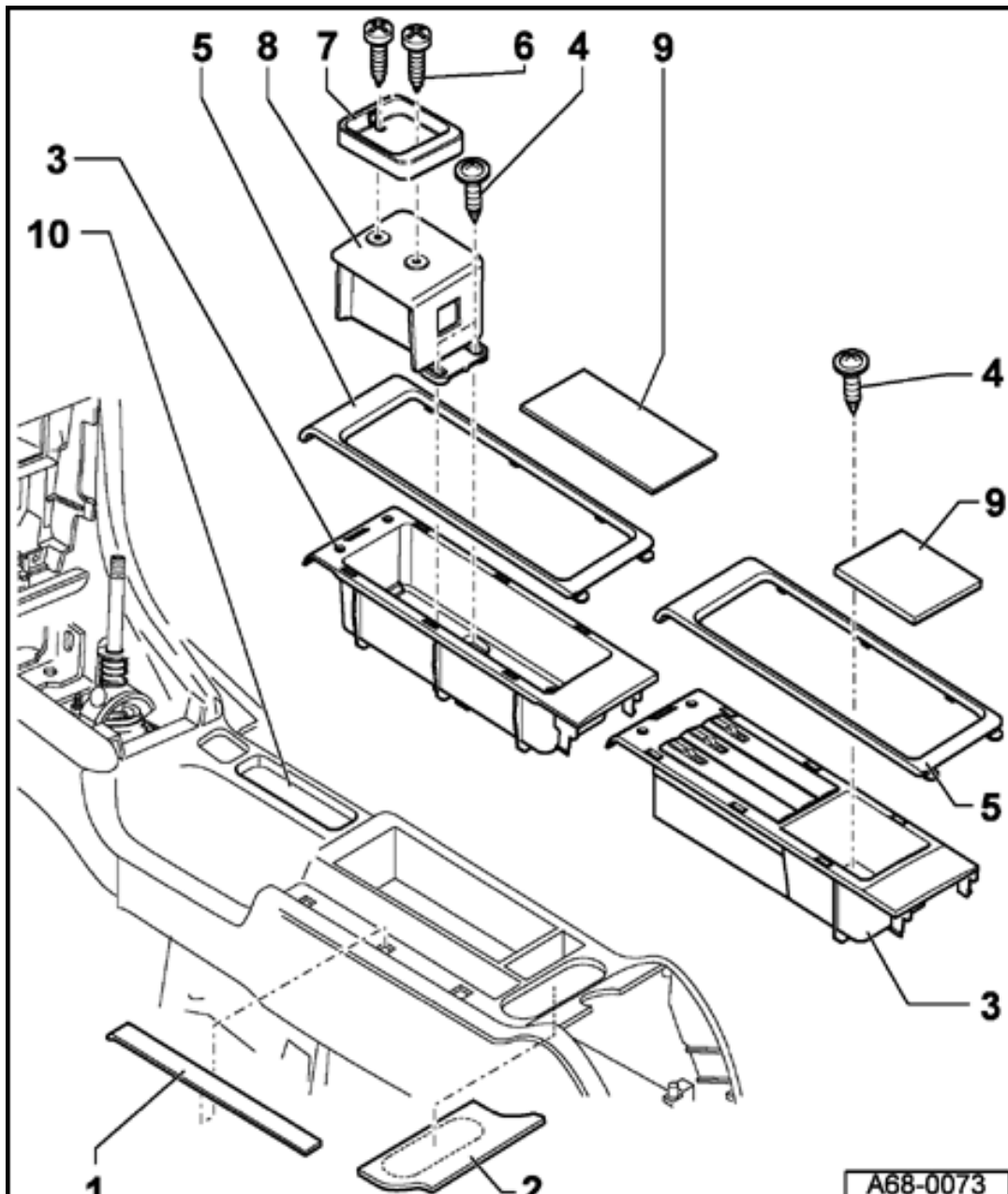
- Remove screw -4-.

- Pay attention to screw length.

- Raise front of tray and pull tray out of trim panel -2- at rear.

- If necessary, lift trim panel -2- at rear.

68-13



◆ Tray with cassette box

- Remove mat lining -9-.
- Remove screw - 4-.
- Pay attention to screw length.
- Raise front of tray and pull tray out of trim panel -2- at rear.
- If necessary, lift trim panel -2- at rear.

◆ Tray with telephone holder

- Remove mat lining -9-.
- Remove screw - 4-.
- Pay attention to screw length.



- Disconnect connector for telephone.
- Remove bracket - 8-.
- Raise front of tray and pull tray out of trim panel -2- at rear.
- If necessary, lift trim panel -2- at rear.

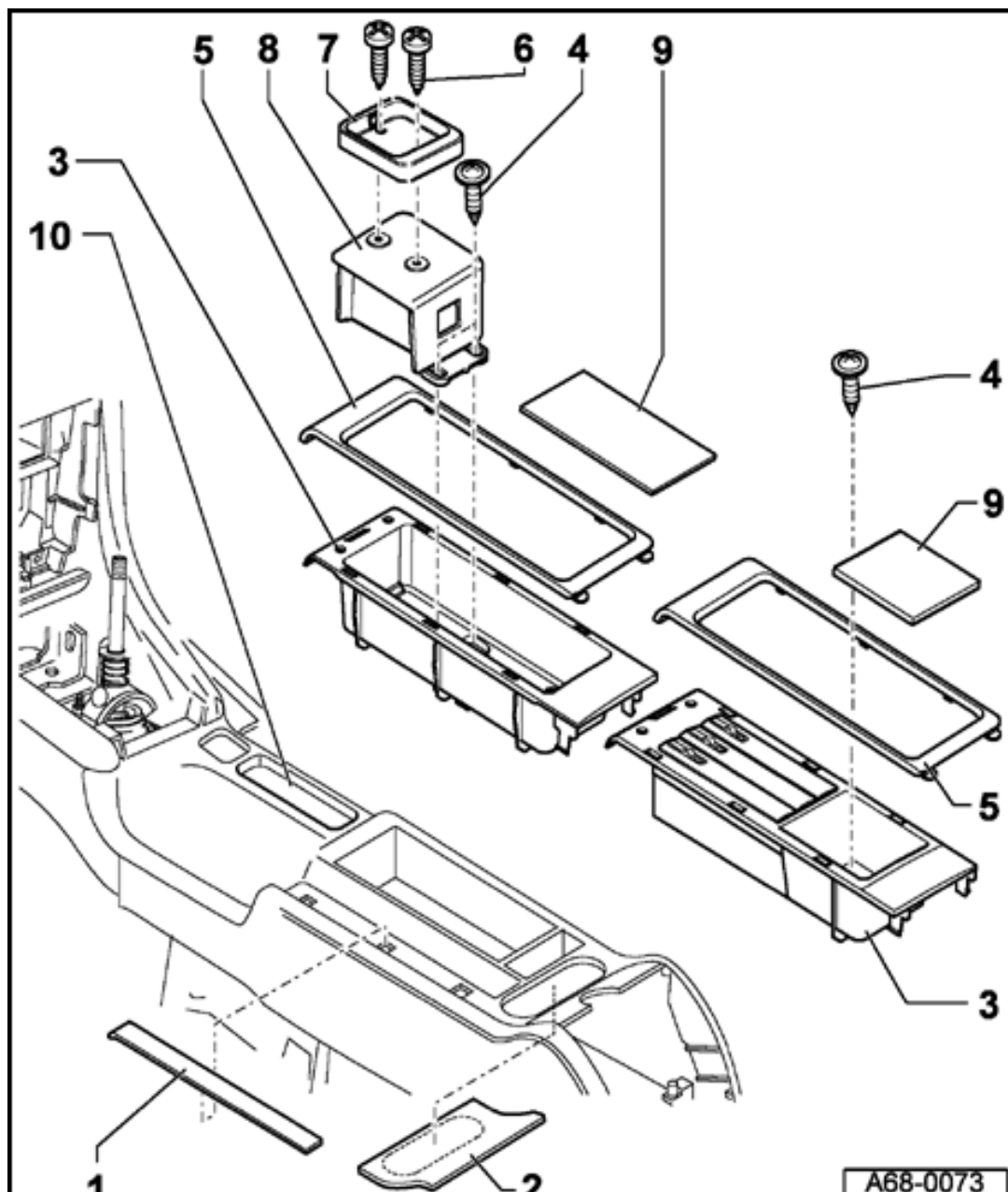
◆ Small tray

- Remove rear section of center console and release retainer tabs (4x).
- Remove tray - 10-.

1 - Side trim strip

2 - Rear trim panel

68-14



3 - Tray

4 - Screw

Length max. 17
mm

5 - Tray trim panel

6 - Screws (2x)

7 - Telephone holder

8 - Bracket

9 - Mat lining

10 - Tray

1



A68-0073

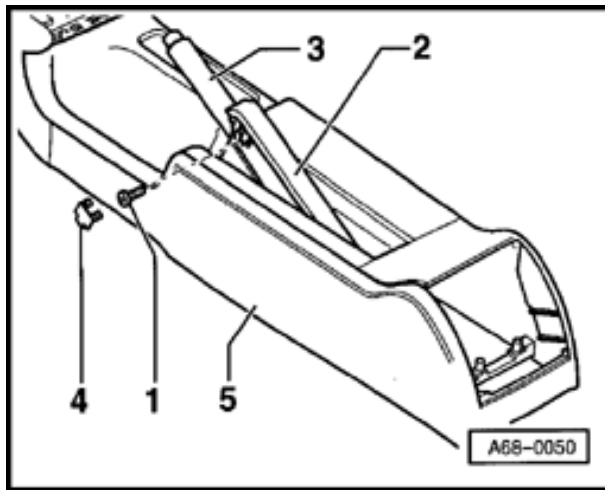
68-15



Parking brake pry trim, removing and installing

Removing

- Pull on parking brake - 3-
- Unclip trim panel - 4-



A

- Remove screw - 1-
- Remove trim - 2-

Installing

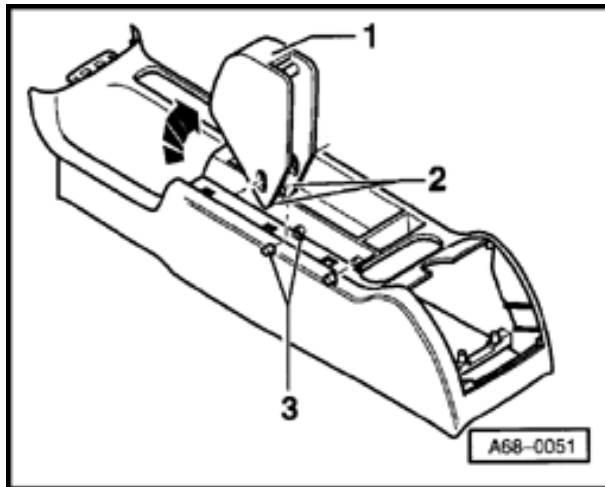
- Screw in bolt -1-, leaving 1-2 thread turns.
- With parking brake -3- released, install parking brake trim -2- in center console -5-.

- Pull on parking brake -
3-.
- Finish tightening bolt -
1-.
- Clip in trim panel -
4-.



Parking brake trim, removing

- Remove rear section of center console ⇒ [Page 68-9](#)

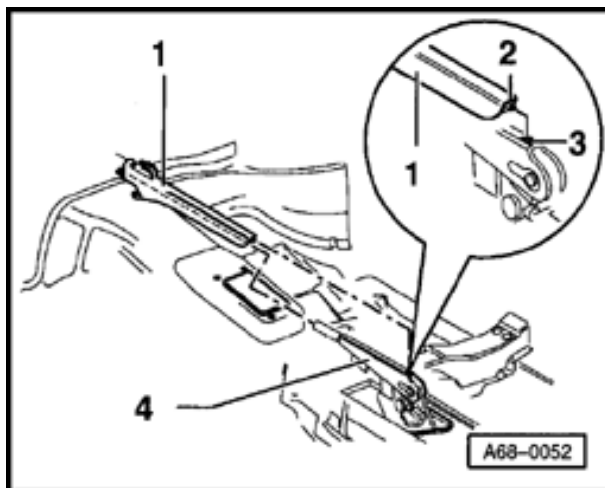


- Fold parking brake trim -1- upward - arrow-.
- Squeeze tabs -2- together and disengage from lugs - 3-.



Parking brake bracket trim, removing and installing

- Pull on parking brake - 4-.
- Remove parking brake pry trim ⇒ [Page 68-16](#) .
- Remove parking brake handle ⇒ [Page 68-18](#) .
- ◀ - Pull off parking brake bracket trim -1- to front.

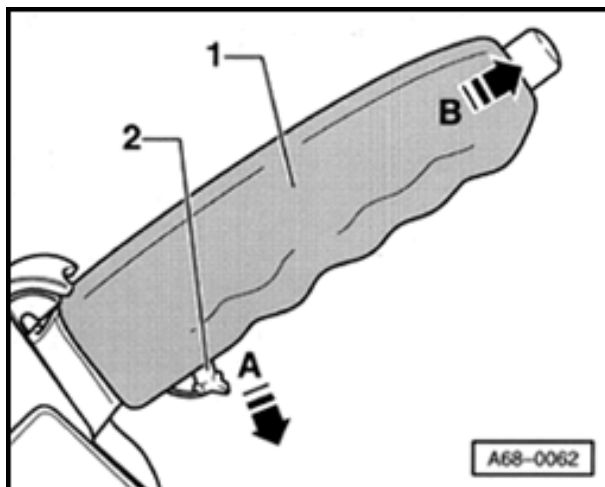


When installing, make sure retainer -2- engages in groove -3-.

68-18



Parking brake handle, removing



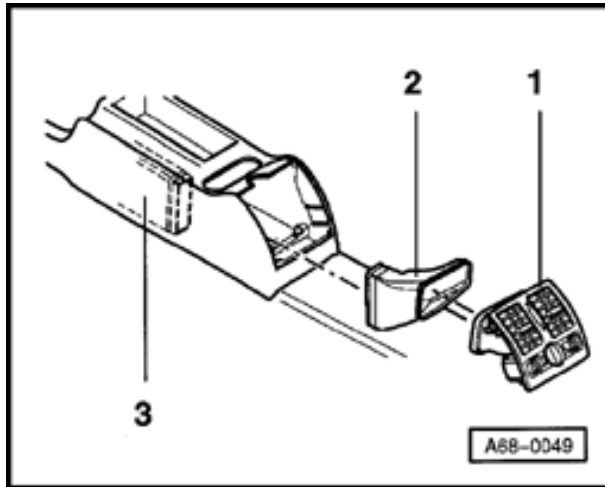
A

- Pry off locking pin -2- in direction of -arrow A-
- Pull off parking brake handle -1- in direction of -arrow B-

68-19



Rear vent and rear air-duct connecting piece, removing

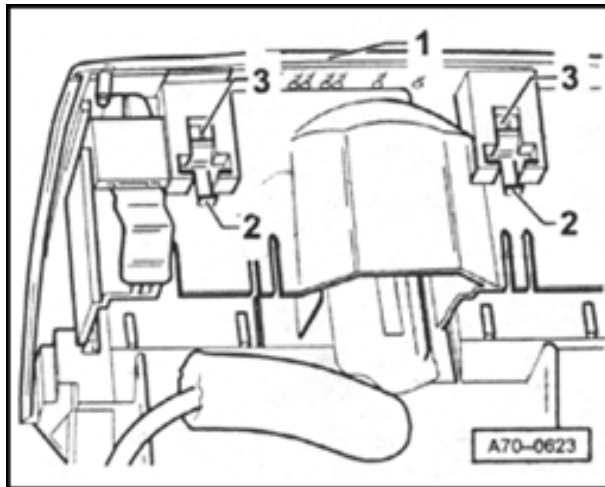


- Use a suitable tool (fabricate and create in workshop: screwdriver bent through 90°, 6-10 mm) to pull rear vent -1- out of rear section of center console.
- Disconnect connectors for cigarette lighter, vent light and rear heated seat.
- Pull rear air-duct connecting piece -2- off air duct -3-.

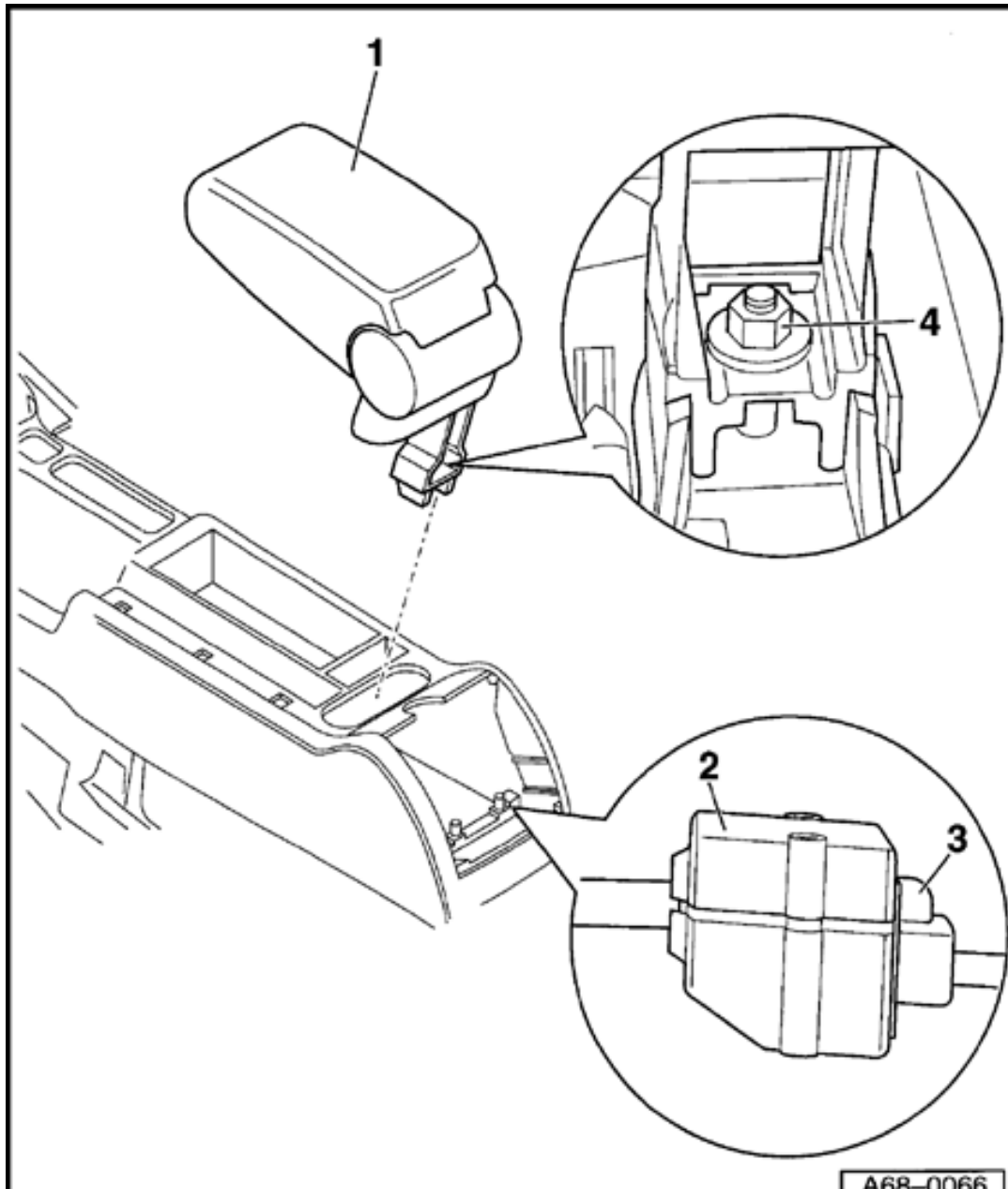


Vent outlet trim, removing

- Remove vent outlet ⇒ [Page 68-19](#)



- Pull springs -2- (4x) back approx. 2 mm.
- Press retaining tabs -3- (4x) and remove trim -1-.
- When installing, be sure that the springs -2- are below retaining tabs -3-.

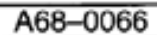


A68-0066

Center armrest, removing and installing

1 - Center armrest

- Remove rear vent and rear air-duct connecting piece ⇒ [Page 68-19](#)
- On center armrest with telephone, disconnect connector -2- by squeezing retainer tabs -3-.
- Remove nut - 4-.
- Remove center armrest -1-.



A68-0066

- When installing, clamp in connector -2- on right-hand side between support bracket and center console.

2 - Connector

3 - Retainer tabs

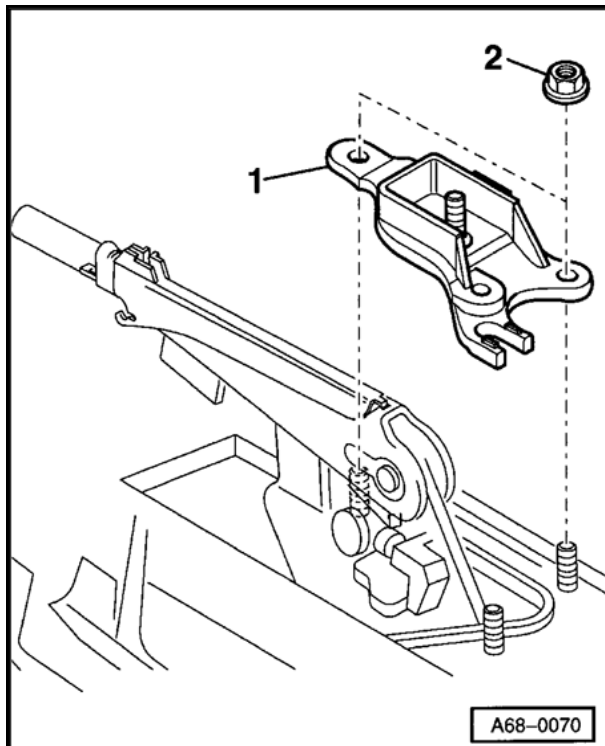
4 - Nut

◆ Tightening torque:
26 Nm (19 ft lb)



Support bracket for center armrest, removing

- Remove center armrest ⇒ [Page 68-21](#) .
- Remove rear section of center console ⇒ [Page 68-9](#) .
- ▲ - Remove nuts -2- (2x).
- Tightening torque: 10 Nm (7 ft lb)
- Remove support bracket - 1-.

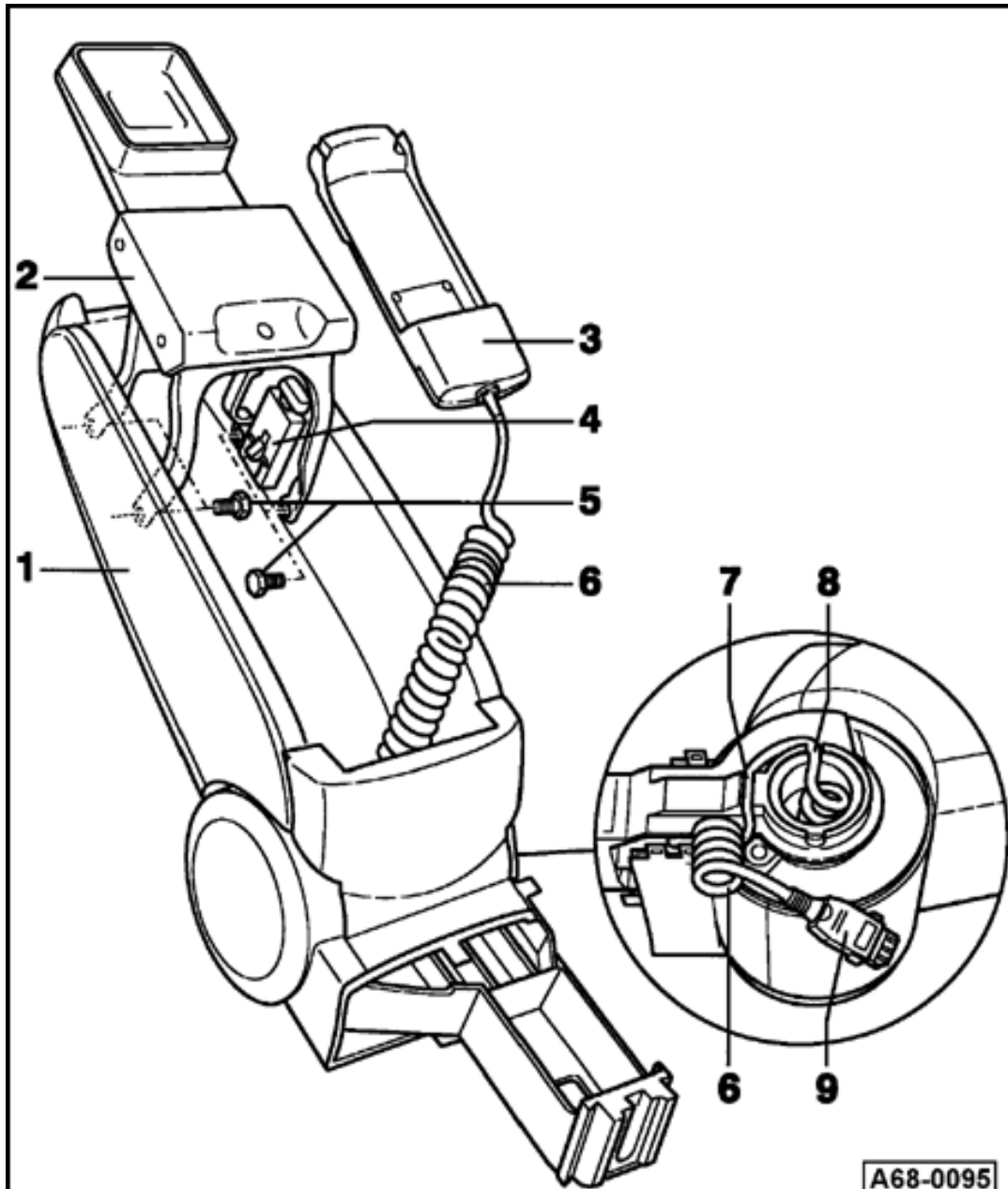


A68-0070



Center armrest, retrofitting

- Remove rear section of center console ⇒ [Page 68-9](#)
- Install support bracket for center armrest ⇒ [Page 68-22](#)
- Remove rear trim panel without cut-out for center armrest and replace with one incorporating cut-out for center armrest ⇒ [Page 68-12](#) , Item 2.
- Install center armrest ⇒ [Page 68-21](#)



A68-0095

Car telephone / mobile phone lift mechanism in center armrest, removing and installing

1 - Center armrest

Note:

For clarity, illustration shows components removed from vehicle and without cover.

2 - Lift mechanism for car telephone / mobile phone

Removing

- Release lift mechanism -2-.
- Warm bolts -5- using a soldering iron until smoke rises and then loosen the bolts with a jolt.



A68-0095

- Remove bolts -5- (4x).

Installing

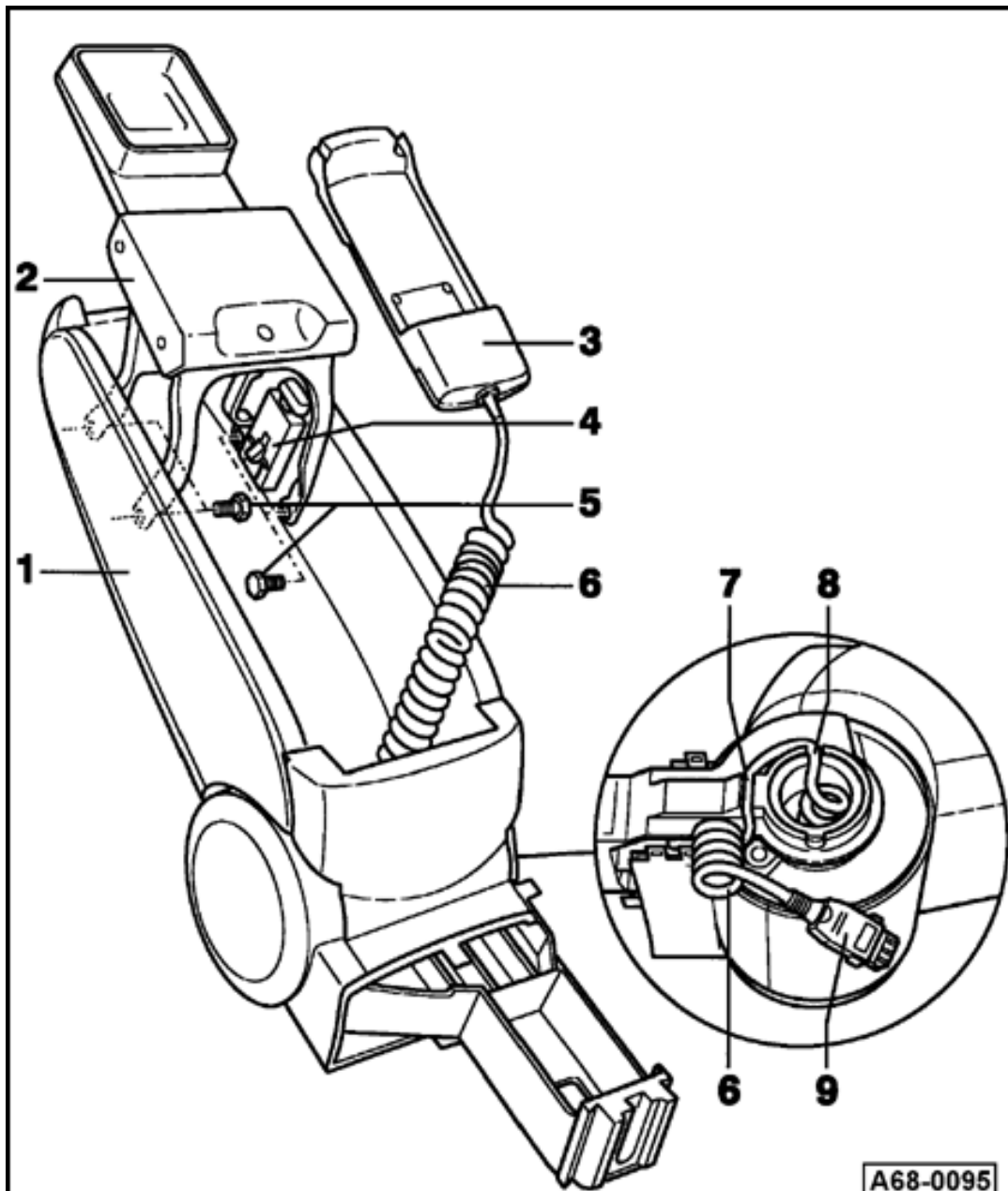
- Always use new bolts.

3 - Carrier for mobile phone

Removing

- Remove center armrest ⇒ [Page 68-21](#) .
- Remove right-hand hinge trim ⇒ [Page 68-26](#) .
- Release wire -6- from mounts -7- and -8-.

68-25



A68-0095

- Pull wire -6- through to the inside together with connector -9-.

Installing

- Make sure that wire -6- is not trapped.

4 - Release catch for lift mechanism

Removing

- Use a screwdriver to pry out release catch -4- at the top.
- Press out release catch -4- at the bottom.

Installing

- Insert at the bottom first.

5 - Bolts (4x)



A68-0095

- ◆ Before removing, warm bolts -5- using a soldering iron until smoke rises and then loosen the bolts with a jolt.
- ◆ Always replace.
- ◆ Before installing new bolts, clean out threads in threaded inserts (re-tap).
- ◆ Tightening torque: 2 Nm (18 in. lb)

6 - Wire

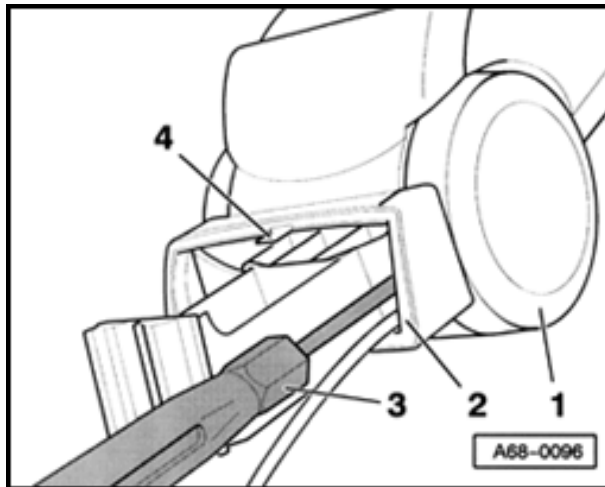
7 - Mount

8 - Mount

9 - Connector



Side hinge trim, removing



- Remove rubber insert -
2-

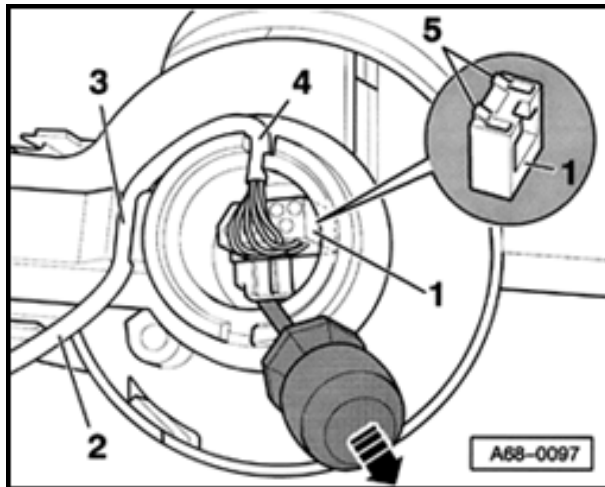
When installing, note position of slot -
4-

- Pry off hinge trim -1- carefully using a screwdriver -
3-

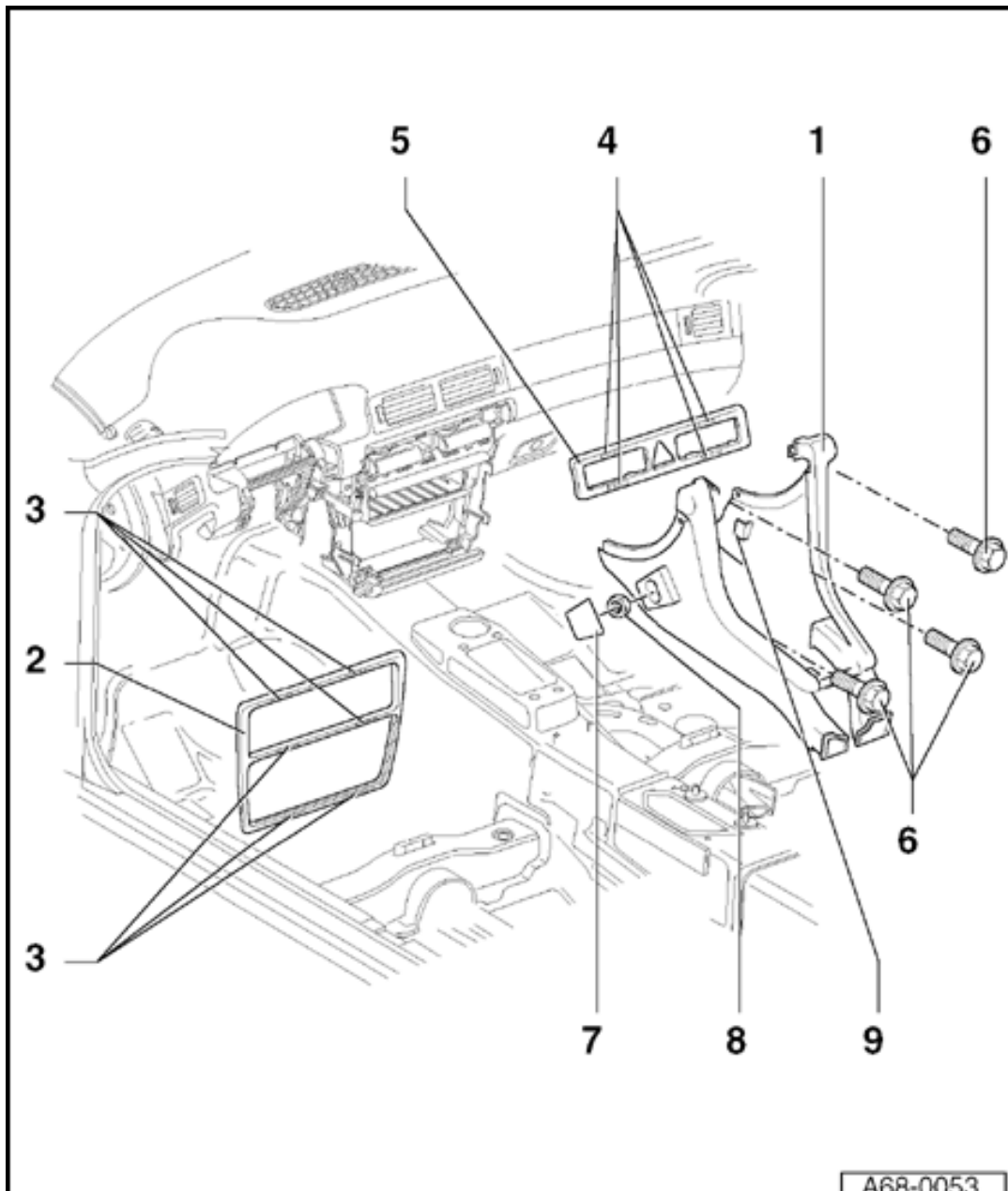
68-27



Wire and connector for telephone, removing



- Release wire -2- from mounts -3- and -4-.
- Using a screwdriver, pry connector -1- from underneath in direction of arrow.
- When installing, insert retainer lugs -5- first.



Center console (front section), removing and installing

1 - Front section of center console

Removing

- Remove rear section of center console ⇒ [Page 68-9](#)
- Open front ashtray and unclip trim section -2- at fasteners -3- (6x) (only for "Chorus and Concert" radios).
- Remove radio for "Chorus and Concert" radios.

⇒ [Repair Manual, Communication, Repair Group 91; Radio System, Removing and installing radio](#)

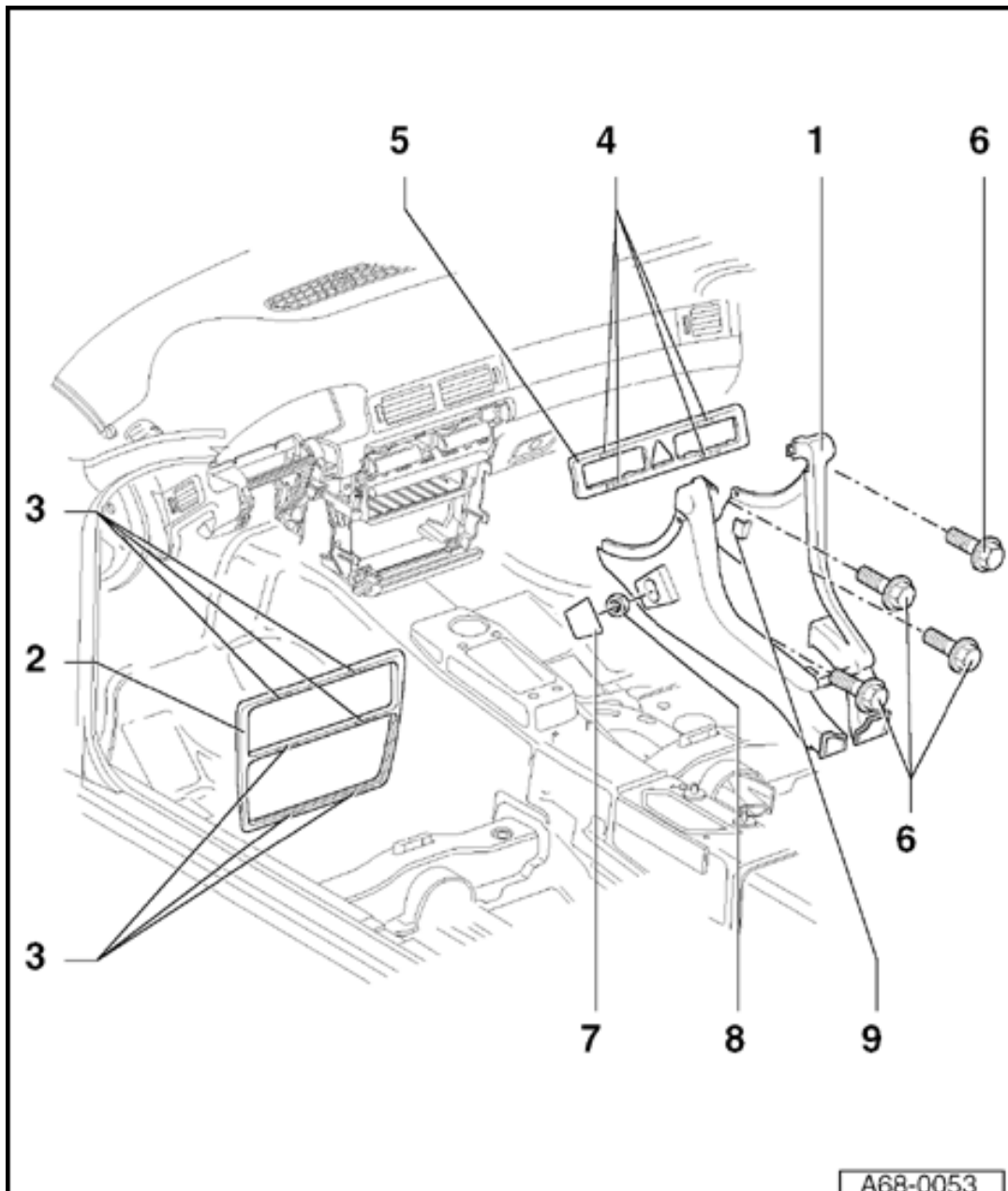
A68-0053

- Remove
radio.

⇒ [Repair Manual,
Communication, Repair
Group 91; Radio System,
Removing and installing
"Symphony" radio](#)

- Remove
operating
electronics and
telephone control
module -J412- for
"plus" radio
navigation
system.

⇒ [Repair Manual,
Communication, Repair
Group 91; Radio System,
Removing and installing radio](#)



A68-0053

- Remove A/C control panel/ heating controls

⇒ [Repair Manual, Heating & Air Conditioning, Repair Group 87; Air conditioning, Climate control components, passenger compartment, Removing and installing A/C Control Head -E87-](#)

- Remove front ashtray for vehicles with "Chorus and Concert" radio systems ⇒ [Page 68-38](#)

- Remove front ashtray for vehicles with "Symphony" radio systems and "radio-navigation plus" ⇒ [Page 68-40](#)

A68-0053

- Unclip switch-panel trim -5- at fasteners -4- (4x).
- Remove bolts -6- (4x).
- Pry off trim cap -7-.
- Remove nut -8-.
- Pull center console over securing pin on driver's side.
- Pull out center console to rear.

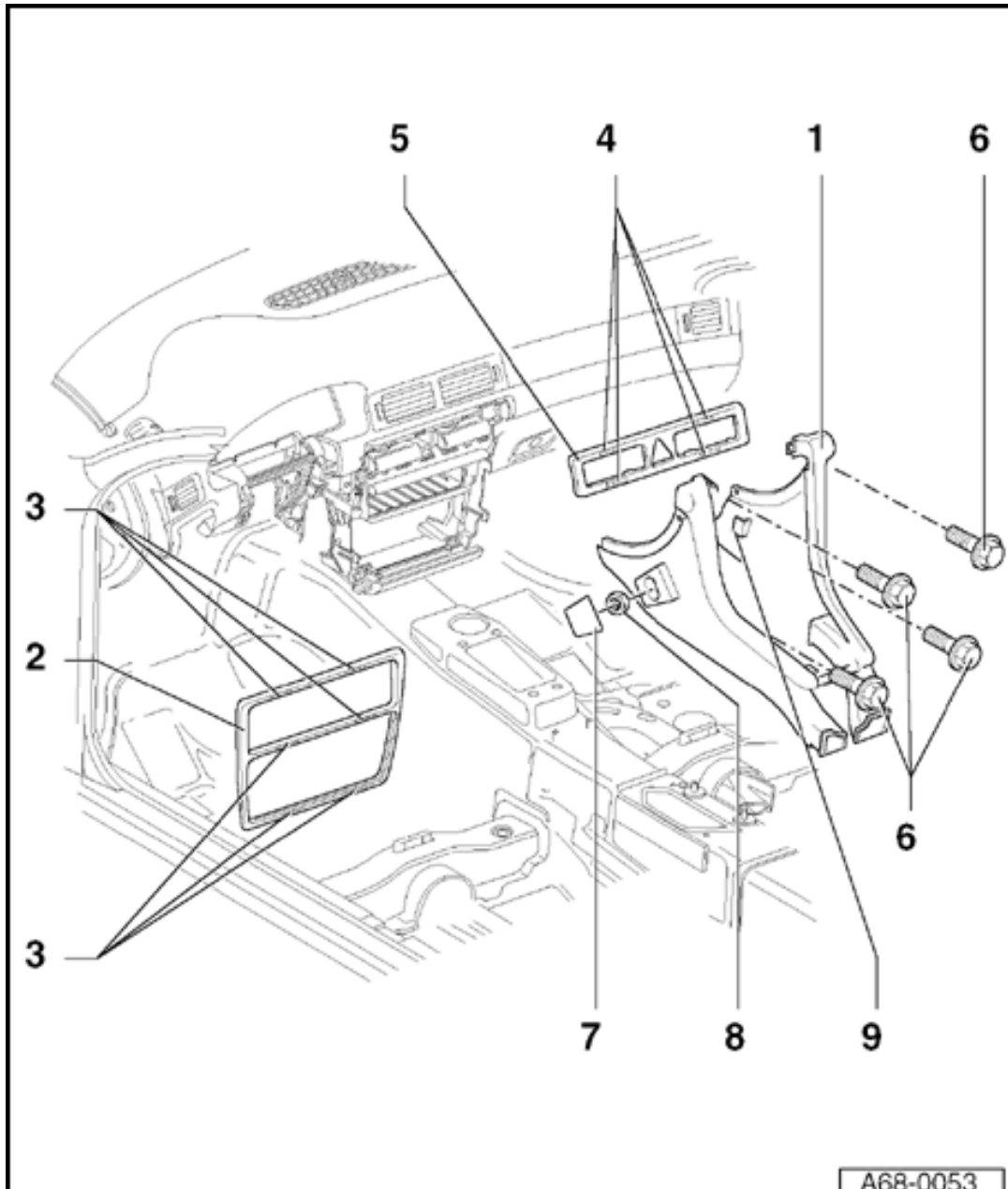
Installing

- When inserting center console -1-, install retainer -9- in fastener.

2 - Trim section

3 - Fasteners

68-30



4 - Fasteners

5 - Switch-panel trim

6 - Bolts (4x)

◆ Tightening torque: 5
Nm (44 in. lb)

7 - Trim cap

8 - Nut

9 - Retainer

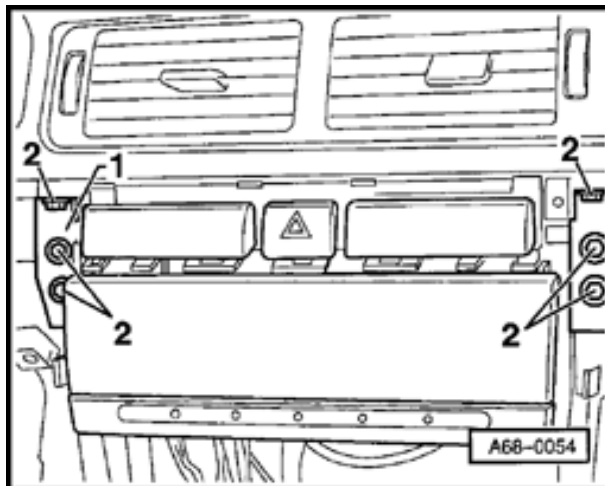
A68-0053

A68-0053



Center section of instrument panel (vehicles with "Chorus" and "Concert" radios), removing

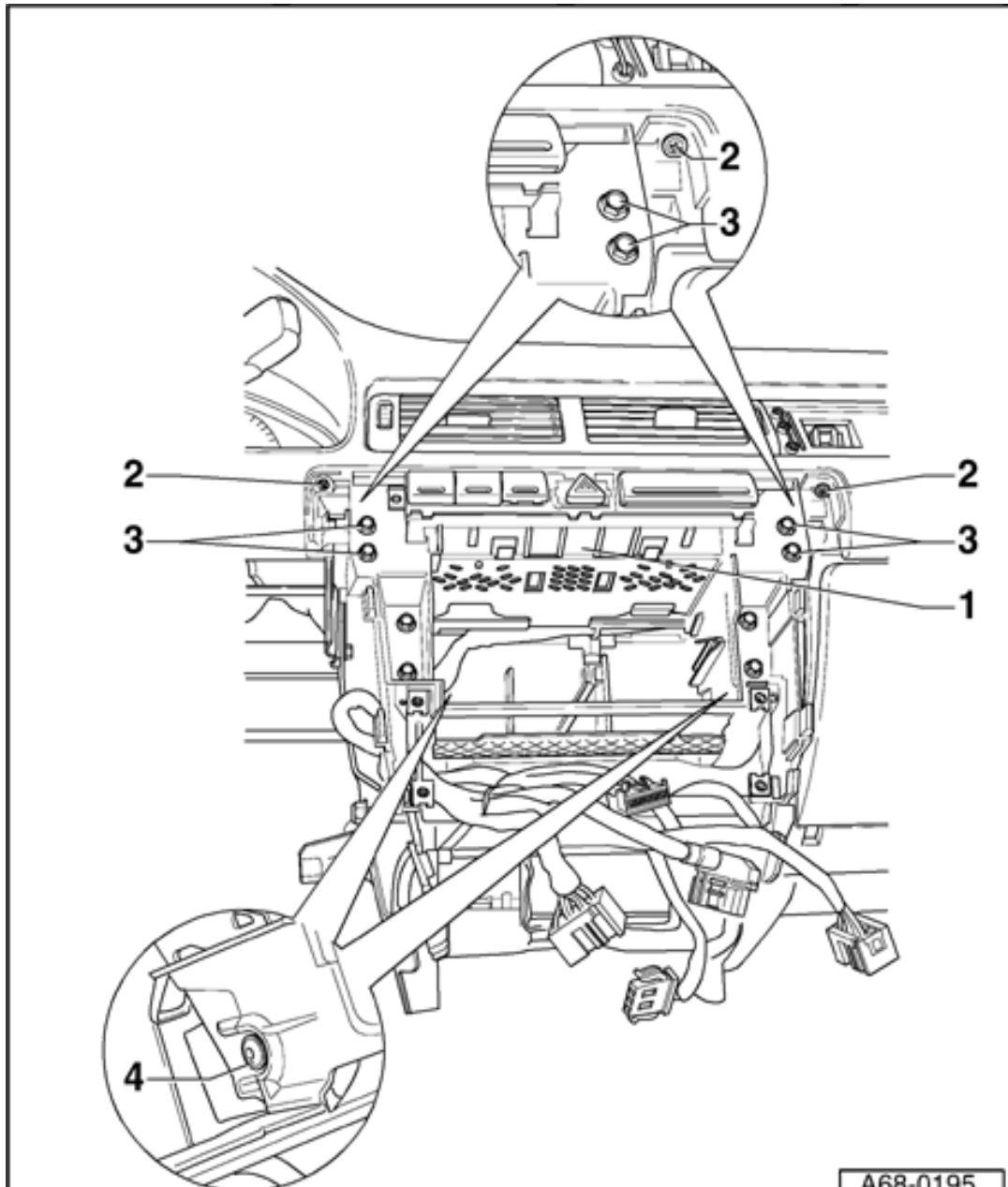
- Remove front section of center console ⇒ [Page 68-28](#) .



- Remove bolts -2- (6x).

Tightening torque: 4 Nm (35 in. lb)

- Pull center section of instrument panel -1- forward.
- Disconnect connectors for hazard warning light switch, storage compartment and cup holder.
- Cut off cable tie on wiring harness for hazard warning light switch.



Center part of instrument panel (vehicles with "Symphony" radios and "radio-navigation system plus"), removing

1 - Center part of instrument panel

- Remove switch panel trim ⇒ [Page 68-37](#) item no. 2.
- Remove radio for "Symphony" radio systems.

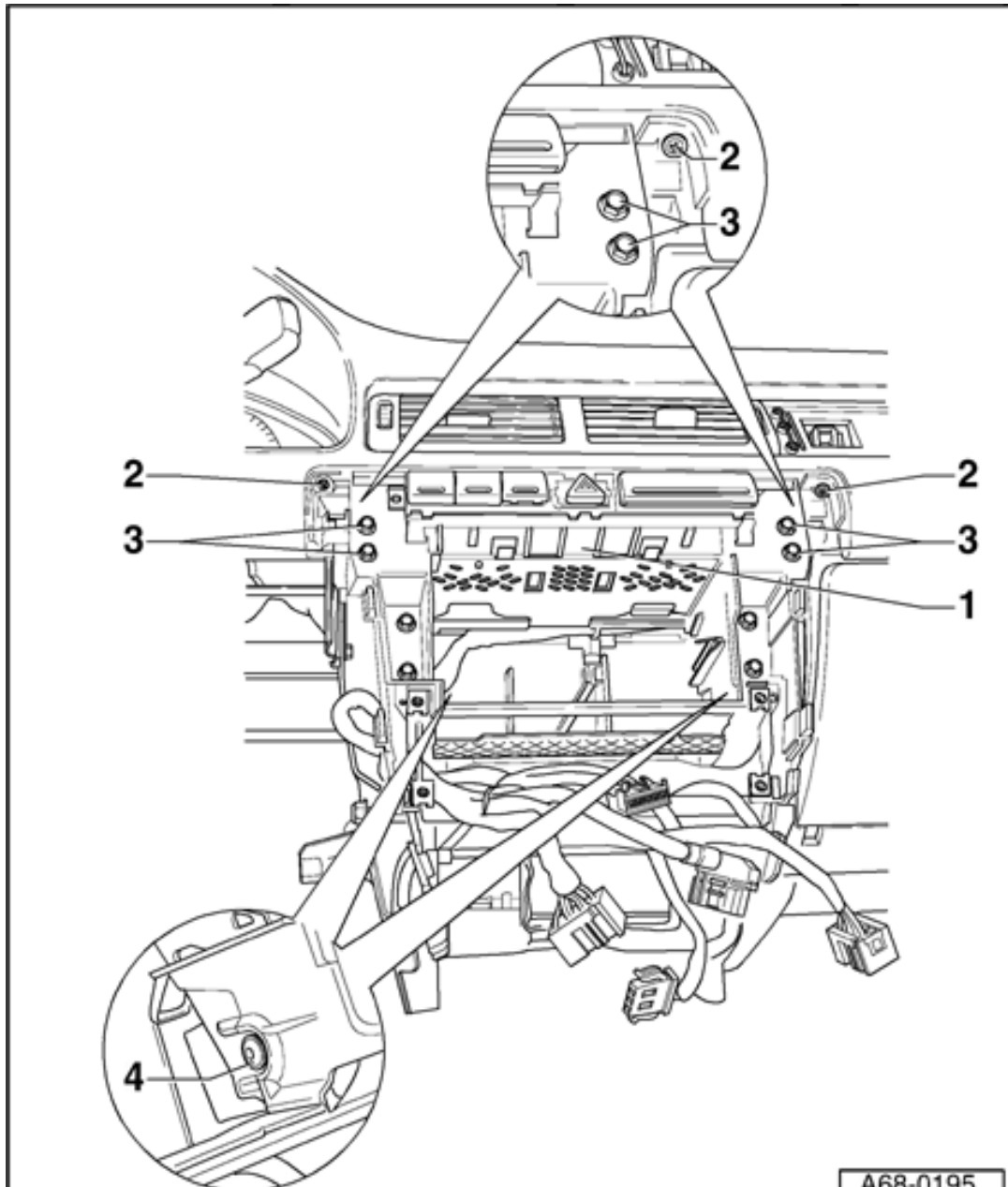
⇒ [Repair Manual, Communication, Repair Group 91; Radio System, Removing and installing "Symphony" radio](#)



A68-0195

- Remove operating electronics and telephone control module -J412- for "plus" radio navigation system.

⇒ [Repair Manual, Communication, Repair Group 91; Radio System, Removing and installing radio](#)



- Remove A/C control panel/ heating controls

⇒ [Repair Manual, Heating & Air Conditioning, Repair Group 87; Air conditioning, Climate control components, passenger compartment, Removing and installing A/C Control Head -E87-](#)

- Remove front center console ⇒ [Page 68-28](#)
- Remove screws - 2- (2x).
- Remove bolts -3- (4x).
- Remove screws - 4- (2x).
- Remove center part of instrument panel,

2 - Screws (2x)

3 - Bolts (4x)



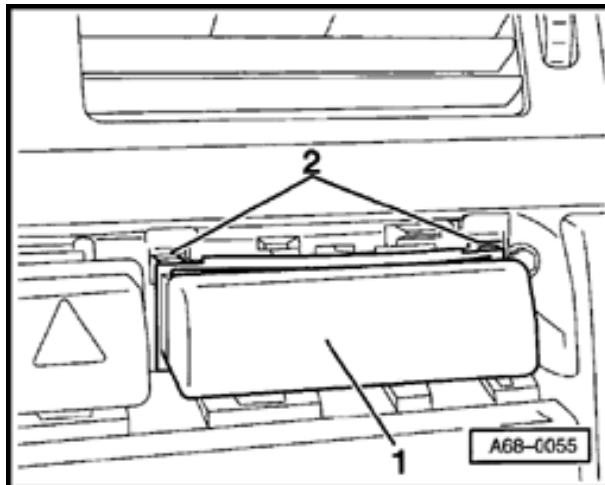
◆ Tightening torque: 4
Nm (35 in. lb)

4 - Screws (2x)

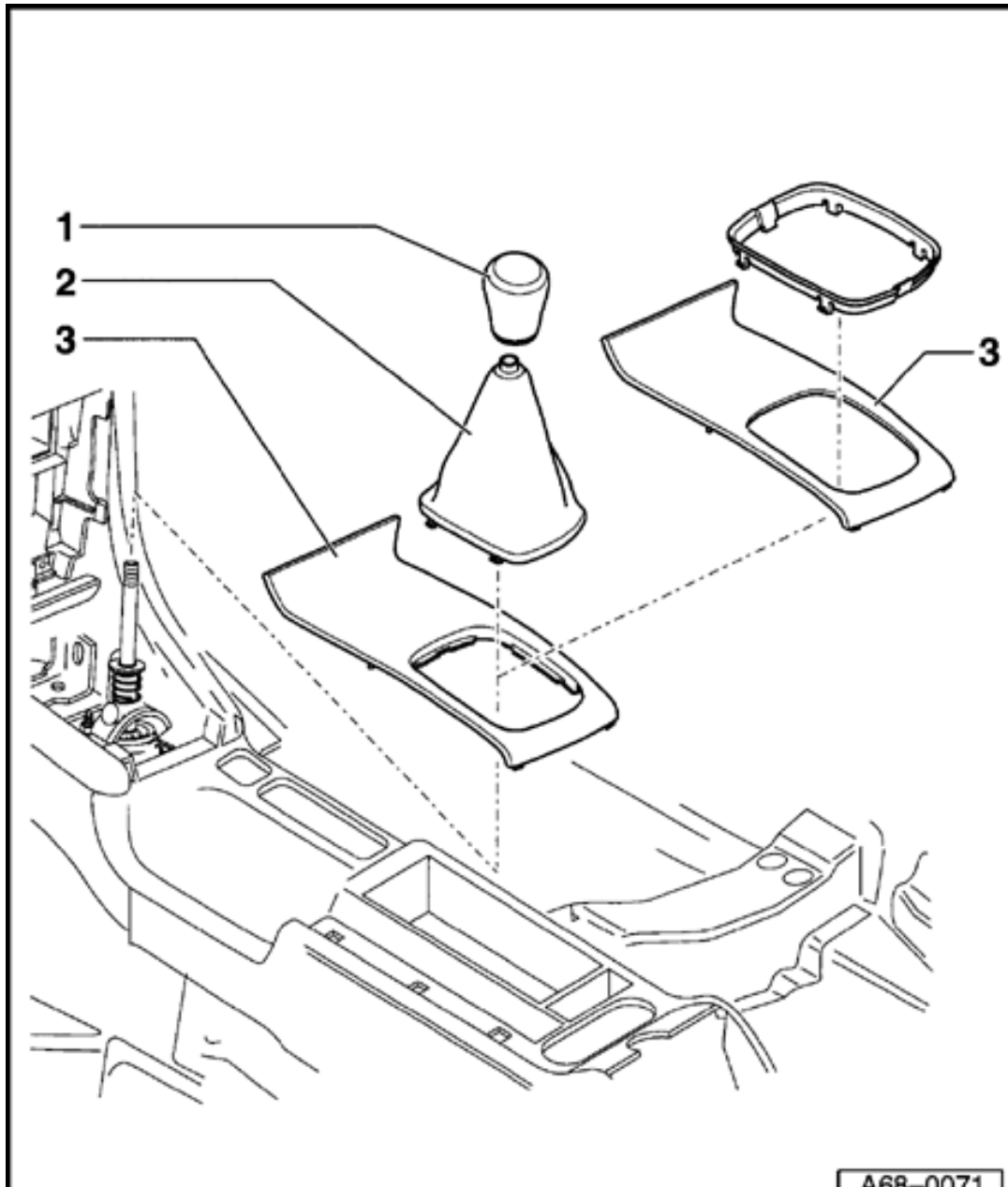


Cup holder and storage compartment, removing

- Unclip switch-panel trim ⇒ [Page 68-37](#) .



- Insert radio assembly tool at retainer tabs -2- (2x) and pull out cup holder/storage compartment -1-.
- Disconnect connectors for storage compartment and cup holder.



A68-0071

Center console insert, removing

- ◆ Manual transmission:
 - Twist off shifter knob -1-.
 - Unclip protective boot -2- upward.
 - Unclip center console insert -3- upward.
- ◆ Automatic transmission:
 - Move selector pry to one of the rear positions.
 - Unclip center console insert -3- upward.

1 - Shifter knob

- ◆ Twisted on

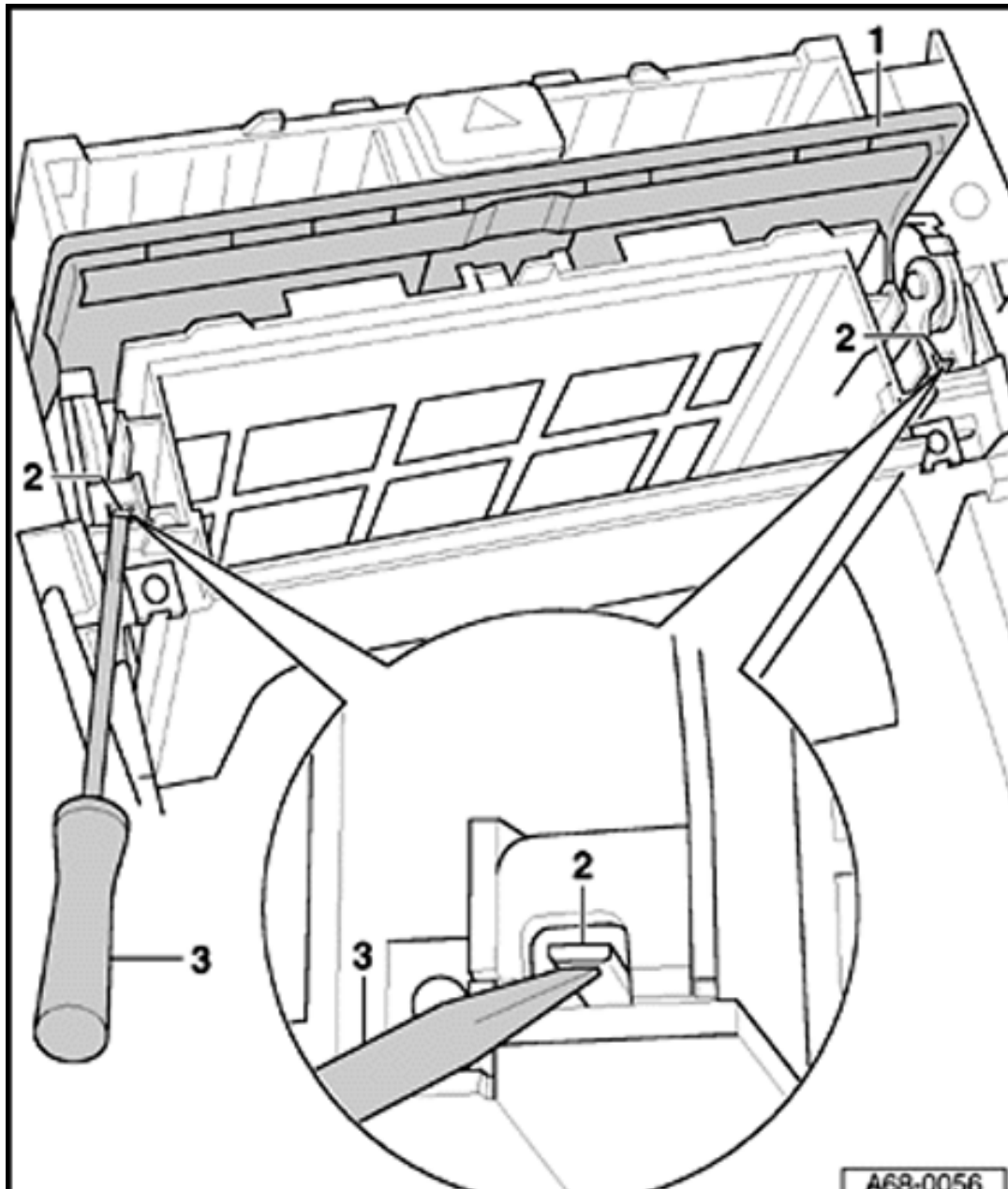
2 - Protective boot

A68-0071

- ◆ Pay attention to position of locking clips when installing.

3 - Center console insert

68-36



Radio flap, removing

1 - Radio flap

- Remove radio

⇒ [Repair Manual, Communication, Repair Group 91; Radio System, Removing and installing radio](#)

- Unclip trim section ⇒ [Page 68-37](#)
- Use screwdriver - 3- to press up retainer tabs -2- (2x) and pull out radio flap -1-.

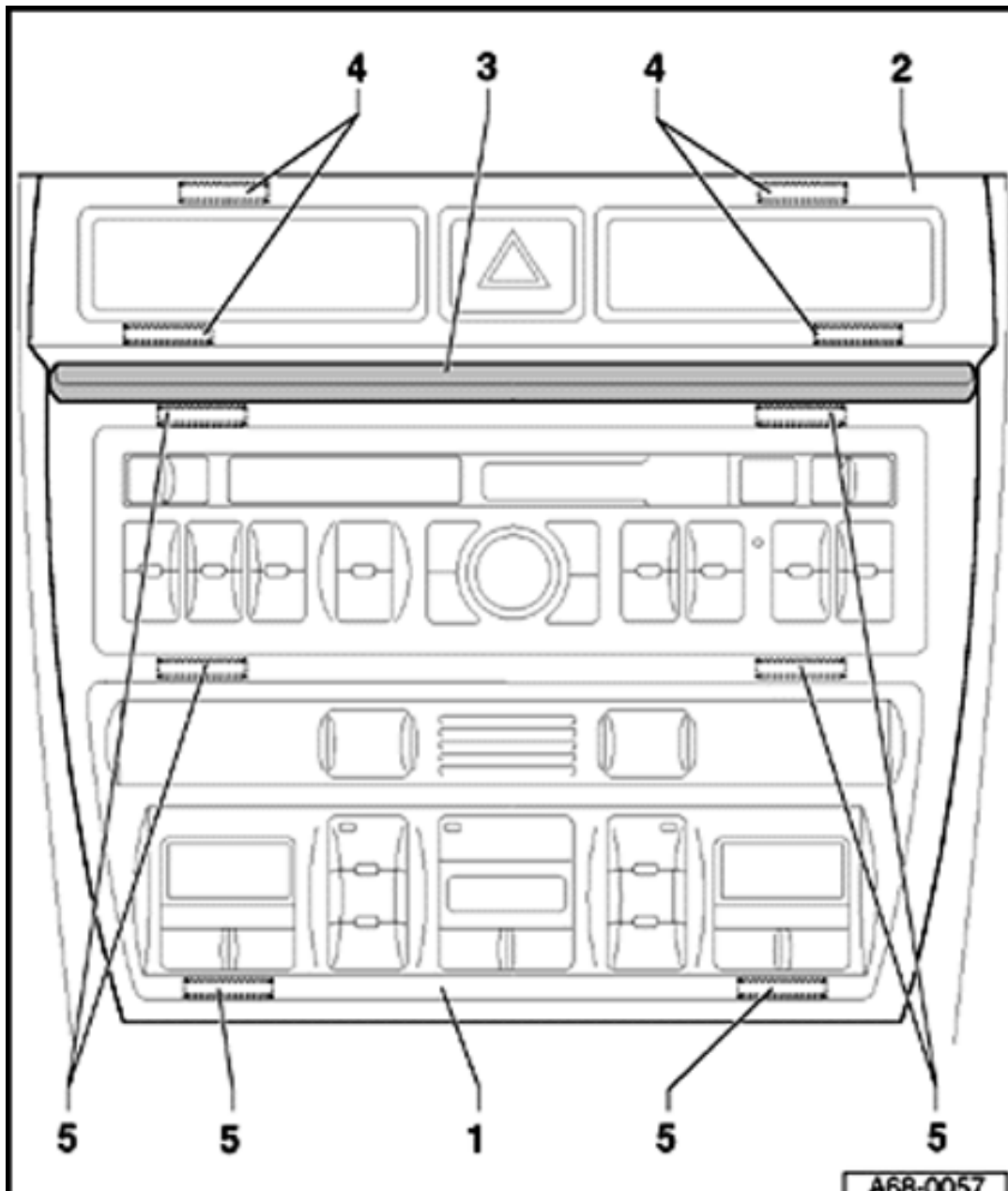
2 - Retainer tabs

3 - Screwdriver



A68-0056

68-37



Trim section and switch-panel trim, removing

1 - Trim section

- Open radio flap - 3-
- Open front ashtray.
- Starting at bottom, carefully unclip trim section -1- at fasteners -5- (6x).

2 - Switch-panel trim

- Starting at bottom, carefully unclip switch-panel trim -2- at fasteners -4- (4x).

3 - Radio flap

4 - Fasteners

5 - Fasteners

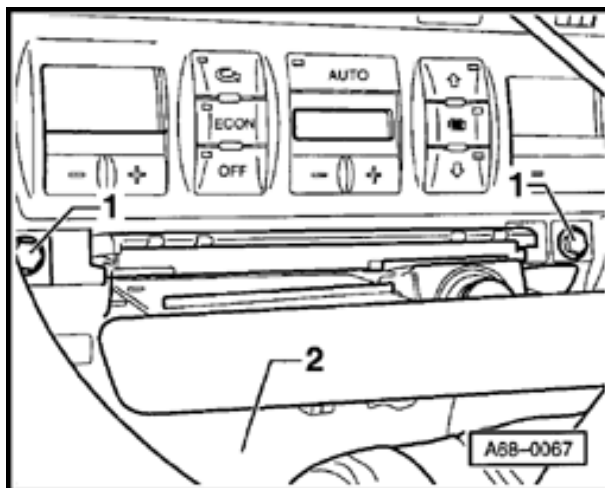
A68-0057

A68-0057



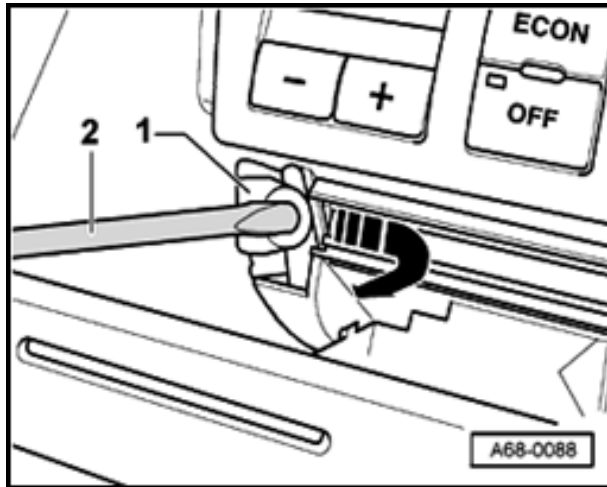
Front ashtray (vehicles with "Chorus" and "Concert" radios), removing and installing

- Unclip trim section ⇒ [Page 68-37](#)
- Unclip center console insert -2- ⇒ [Page 68-35](#)
- Open front ashtray



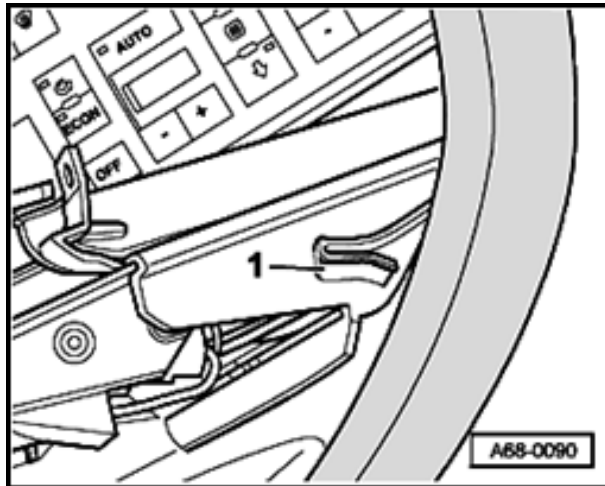
- Remove bolts -1- (2x).

Tightening torque: 2 Nm (18 in. lb)



- Using a screwdriver -2-, pull out retainers -1- on left and right in direction of arrow.
- Carefully pull A/C control head out slightly toward the rear, and pull out ashtray downward and toward the rear.
- Pull ashtray toward the rear and disconnect wires for cigarette lighter and ashtray light.

68-39



- When installing, make sure that guides -1- engage in center console on left and right sides.

68-40



Front ashtray (vehicles with "Symphony" radios and "radio-navigation plus"), removing

- Remove radio for "Symphony" radio system.

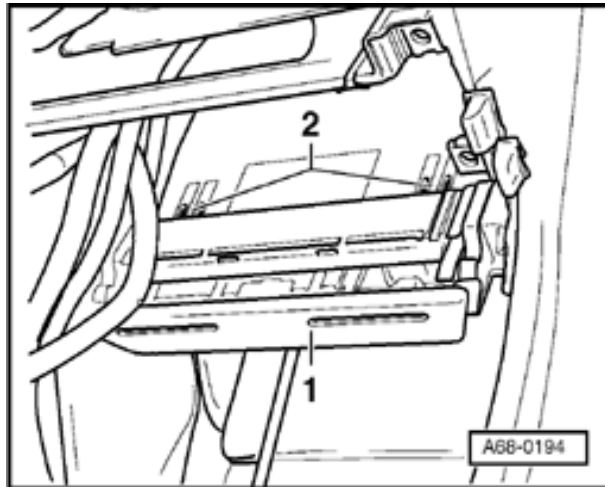
⇒ [Repair Manual, Communication, Repair Group 91; Radio system, removing and installing "Symphony" radios](#)

- Remove operating electronics and telephone control module -J412- for "plus" radio navigation system.

⇒ [Repair Manual, Communication, Repair Group 91; Radio system, Removing and installing operating electronics and telephone control module -J412-](#)

- Remove A/C controls and heat controls.

⇒ [Repair Manual, Heating & Air Conditioning, Repair Group 87; Air Conditioning, Climate control components, passenger compartment, A/C control head -E87-, removing and installing.](#)



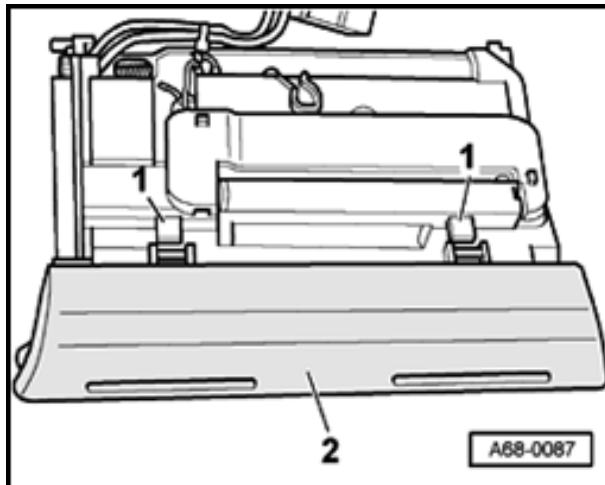
- Press retaining tabs -2- and pull ashtray out forward.
 - Disconnect harness connectors.
- 1 -
Ashtray

68-41



Front ashtray trim, removing

- Open front ashtray.
- Remove front ashtray ⇒ [Page 68-38](#) .
- ◀ - Use screwdriver to press up retainer tabs -1- (2x) and remove trim -2- forward.



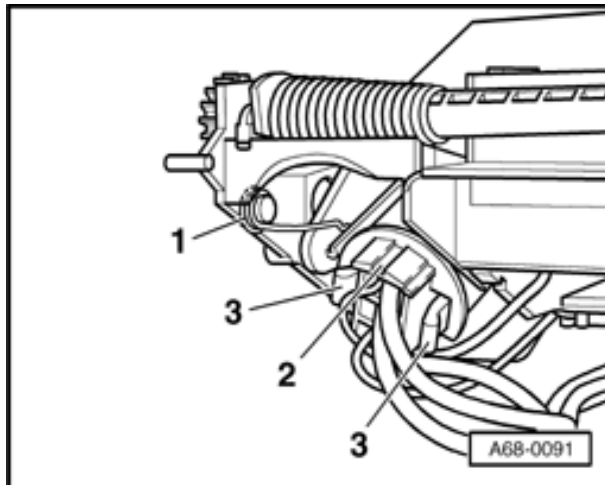


Front cigarette lighter, removing and installing

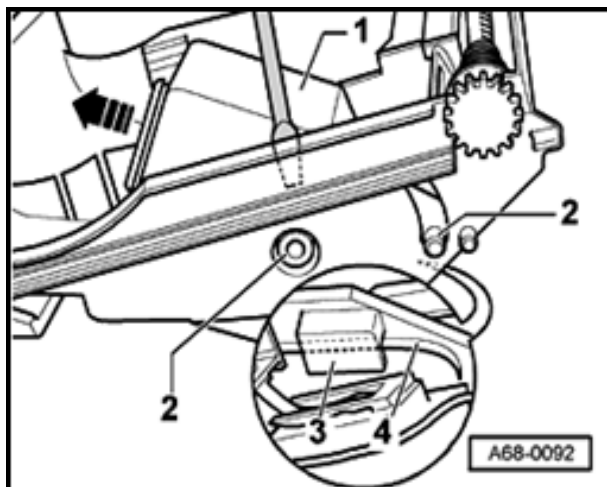
- Remove front ashtray ⇒ [Page 68-38](#) .

Note:

Components are shown disassembled for greater clarity.



- Disconnect connector -2- by squeezing together retainers -3-.
- Remove spring -1-.
- Press cigarette lighter -1- inward slightly.



- Using a screwdriver, pry off pegs -2- on left and right sides.
- Pry out pry -4- behind retainer -3-.