

FUEL PRESSURE REGULATORS

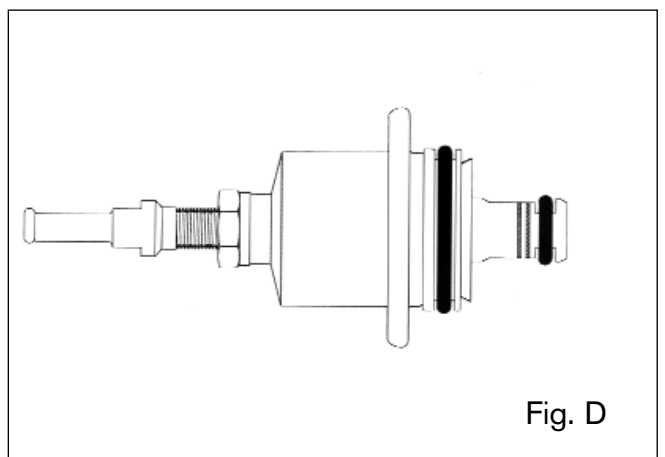
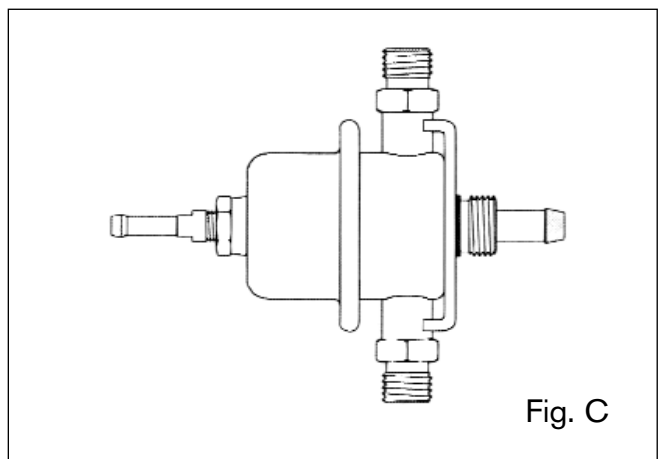
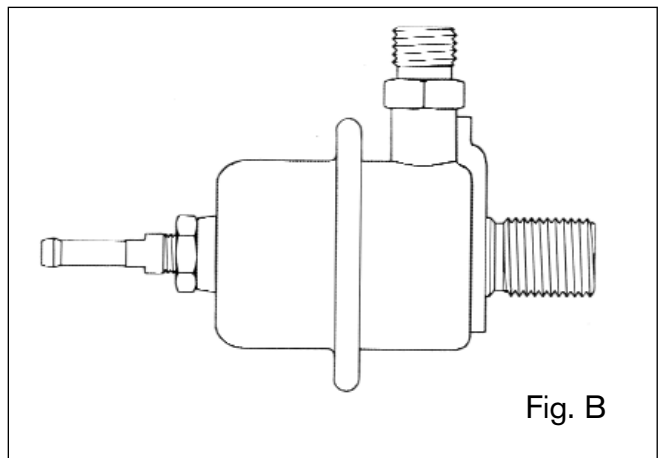
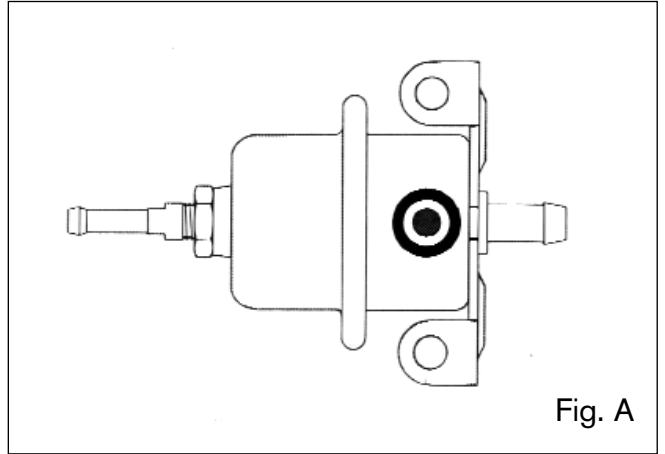
Purpose and Function.

The fuel pressure regulator is designed to maintain the differential between fuel rail pressure and intake manifold pressure constant across various engine operating conditions. As pintle type injectors are adversely affected by pressure variations the pressure regulators "set" pressure must be maintained.

Due to the fact that the pressure regulator typically has a vacuum connection to the inlet manifold, the rail pressure will be seen to fluctuate on a pressure gauge in relation to inlet manifold vacuum fluctuations. These variations reflect the regulators operation to maintain constant pressure differential across the fuel injector.

Note!

Images are representative of generic design only.



FUEL PRESSURE REGULATOR TECHNICAL DATA
NON-ADJUSTABLE REGULATORS

Part Number	Set Pressure [bar]	Inlet Connection	Outlet Connection	Return Flow Max [l/h]	Type	Figure	Comment
0 280 160 001	1.9 - 2.1	8 mm Barb	8 mm Barb	---	---	B	Not vacuum compensated
0 280 160 007	1.9 - 2.1	2 x 8 mm Barb	8 mm Barb	---	---	C	Not vacuum compensated
0 280 160 221	2.5	8 mm Barb	8 mm Barb	---	---	B	
0 280 160 227	2.5	10 mm "O" ring	8 mm Barb	---	DR 4	A	
0 280 160 230	2.5	M12 x 1.5	M14 x 1.5	---	DR 4	B	
0 280 160 234	3.0	M12 x 1.5	M14 x 1.5	---	DR 4	B	
0 280 160 237	3.0	10 mm "O" ring	M12 x 1.5	---	DR 4	A	Outlet has internal thread
0 280 160 249	3.0	10 mm "O" ring	8 mm Barb	---	DR 4	A	
0 280 160 575	4.0	NA	NA	---	DR 2	D	
0 280 160 592	3.5	NA	NA	---	DR 2	D	
0 280 160 628	2.7	NA	NA	---	DR 2	D	

ADJUSTABLE REGULATORS

Part Number	Set Pressure [bar]	Inlet Connection	Outlet Connection	Return Flow Max [l/h]	Type	Figure	Comment
B 280 500 701	1.9 - 5.0	10 mm "O" ring	8 mm Barb	115	DR 4	A	
B 280 500 737	1.9 - 5.0	M14 x 1.5	M14 x 1.5	115	DR 4	B	
B 280 500 740	3.0 - 4.0	M12 x 1.5	8 mm Barb	100	DR 4	B	
B 280 500 741	2.0 - 5.0	2 x M14 x 1.5	8 mm Barb	115	DR 4	C	
B 280 500 743	1.5 - 5.0	M14 x 1.5	8 mm Barb	115	DR 4	B	
B 280 500 799	1.9 - 4.0	10 mm "O" ring	M14 x 1.5	115	DR 4	A	
B 280 550 340	2.2 - 3.5	NA	NA	105	DR 2	D	
B 280 550 341	3.5 - 5.0	NA	NA	105	DR 2	D	

Fuel Pressure Regulator Mini A

Pressure ranges: 2,2 ... 3,5 bar/3,5 ... 5 bar



Mechanical data

Supply	24,6 mm, O-ring
Reflow	9,15 mm, O-ring
Reflow quantity	min. 15 l/h, max. 220 l/h
Weight	58 g

Description

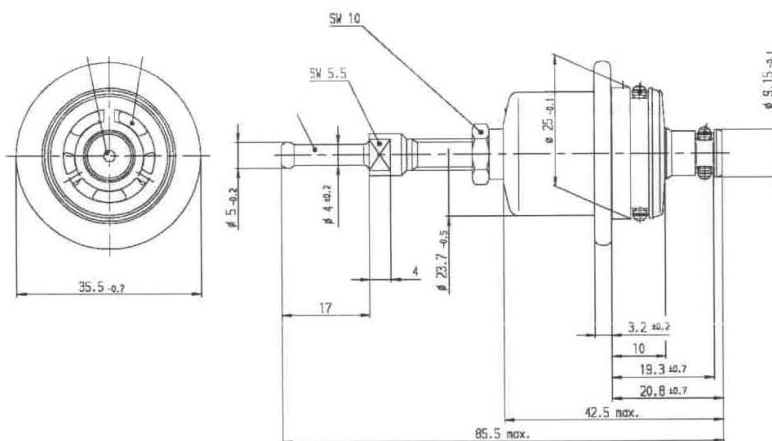
Light weight aluminium housing
No manifold connection

Accessories

Pre-filter **1 287 431 008**

Order numbers

2,2 ... 3,5 bar	B 280 550 340
3,5 ... 5 bar	B 280 550 341
Offer drawing	A 280 550 340



Erledigung durch Kunden Effect by customer

- O-Ringe leicht mit sauberem Motorenöl einölen
Oil O-rings lightly with clean engine oil
- Nach der Montage an Kraftstoffzuteiler ist Dichtheitsprüfung durchzuführen
Leaktest after installation
- Bei Ausbau und Wiederverwendung des Druckreglers müssen die O-Ringe überprüft werden
When the pressure regulator is removed and will be reused, the O-rings must be checked
- Betrieb des Druckreglers mit Luft ist unzulässig
Operation with air is not allowed

Fuel Pressure Regulator Mini 38

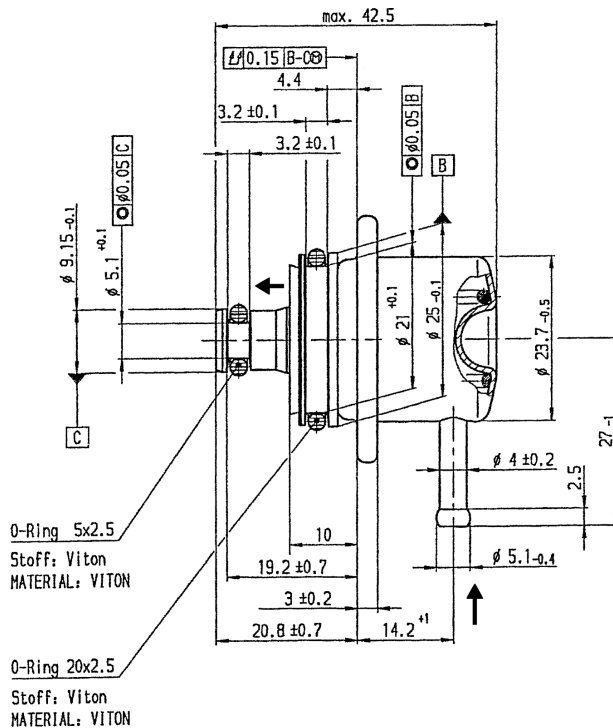
Pressure range: 3,8 bar



Mechanical data	
Set pressure	380 kPa
Set pressure accuracy	2 %
Linearity	1 %
External leak	no fuel leakage at 500 kPa
Bust pressure	> 1500 kPa

Conditions for use	
Temperature range	-40 ... 120° C
Vibration	< 600 m/s ²
Weight	45 g

Order number	
	0 280 160 616
Offer drawing	A 280 160 616



Erledigung durch Kunden Effect by customer

- O-Ringe leicht mit sauberem Motorenöl einölen
Oil O-rings lightly with clean engine oil
- Nach der Montage an Kraftstoffzuteiler ist Dichtheitsprüfung durchzuführen
Leaktest after installation
- Bei Ausbau und Wiederverwendung des Druckreglers müssen die O-Ringe überprüft werden
When the pressure regulator is removed and will be reused, the O-rings must be checked
- Betrieb des Druckreglers mit Luft ist unzulässig
Operation with air is not allowed

Fuel Pressure Regulator Mini 50

Pressure range: 5,0 bar



Mechanical data

Supply	4 mm, tube connector
Reflow	9,15 mm, O-ring

Description

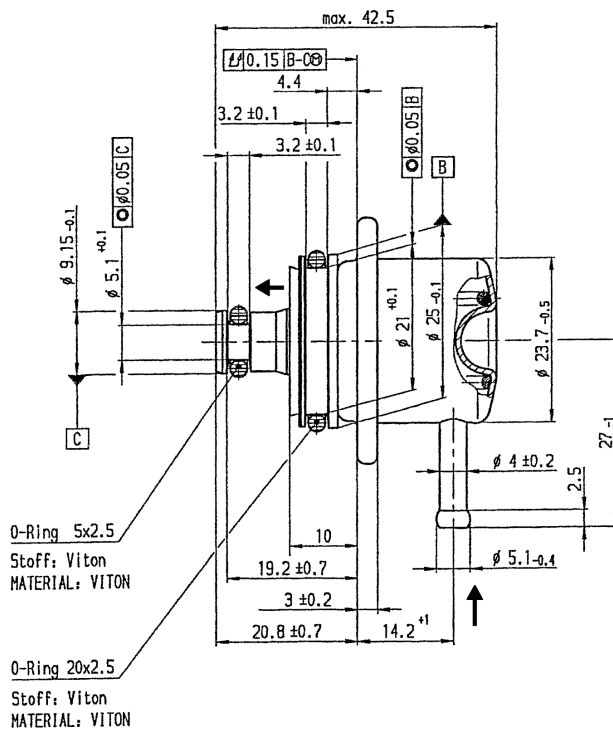
Sheet steel housing with manifold connection

Order number

B 280 550 113

Offer drawing

A 280 550 058



Erledigung durch Kunden Effect by customer

- O-Ringe leicht mit sauberem Motorenöl einölen
Oil O-rings lightly with clean engine oil
- Nach der Montage an Kraftstoffzuteiler ist Dichtheitsprüfung durchzuführen
Leaktest after installation
- Bei Ausbau und Wiederverwendung des Druckreglers müssen die O-Ringe überprüft werden
When the pressure regulator is removed and will be reused, the O-rings must be checked
- Betrieb des Druckreglers mit Luft ist unzulässig
Operation with air is not allowed

Fuel Pressure Regulators Mini/Mini M

Pressure range: 6/8/10 bar

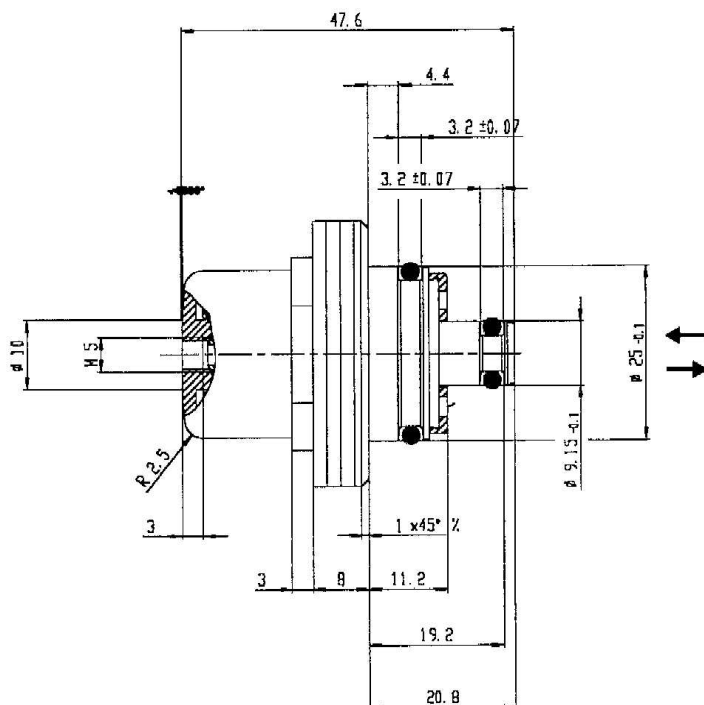
We offer this mini pressure regulator in two fuel-specific versions: the standard version for use with petrol and a M-version for use with methanol.



Mechanical data	
Supply	25 mm, O-ring
Reflow	9,15 mm, O-ring
Reflow quantity	min. 30 l/h, max. 400 l/h

Description	
Light weight aluminium housing	
No manifold connection	

Order numbers	
Standard version	
6 bar	B 261 208 106
8 bar	B 261 208 108
10 bar	B 261 208 109
Methanol version	
6 bar	B 261 208 121
8 bar	B 261 208 122
10 bar	B 261 208 123
Offer drawing	A 261 208 101



Erledigung durch Kunden Effect by customer

- O-Ringe leicht mit sauberem Motorenöl einölen
Oil O-rings lightly with clean engine oil
- Nach der Montage an Kraftstoffzuteiler ist Dichtheitsprüfung durchzuführen
Leaktest after installation
- Bei Ausbau und Wiederverwendung des Druckreglers müssen die O-Ringe überprüft werden
When the pressure regulator is removed and will be reused, the O-rings must be checked
- Betrieb des Druckreglers mit Luft ist unzulässig
Operation with air is not allowed

Fuel Pressure Regulator 34

Pressure range: 3,4 bar



Mechanical data

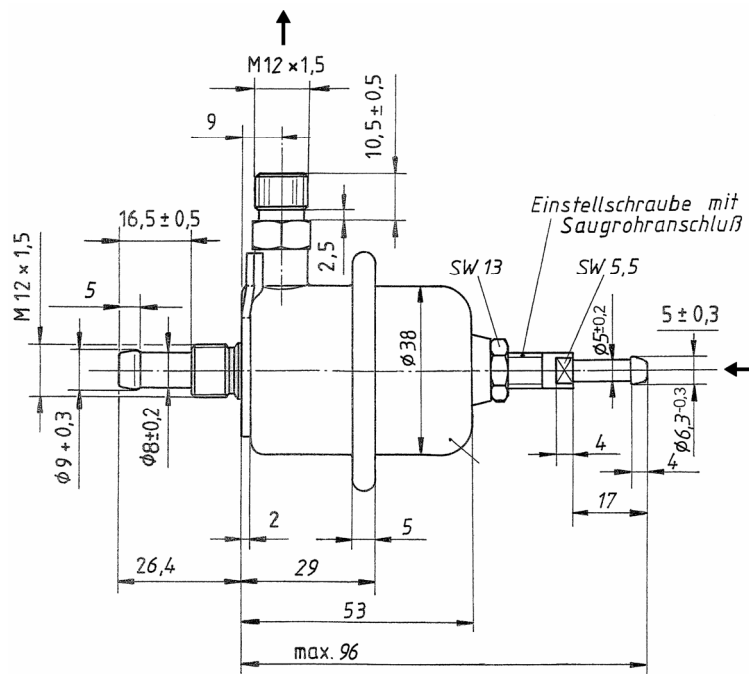
Supply	M12 x 1,5
Reflow	8 mm, tube connector

Order number

	B 280 500 740
Offer drawing	A 280 500 740

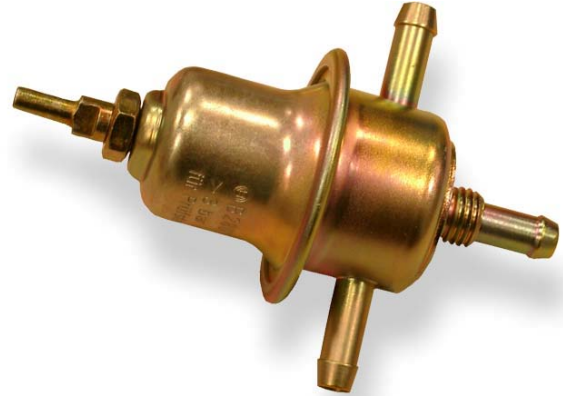
Description

Sheet steel housing with manifold connection



Fuel Pressure Regulator 05-40 A

Pressure range: 0,5 ... 4 bar



Mechanical data

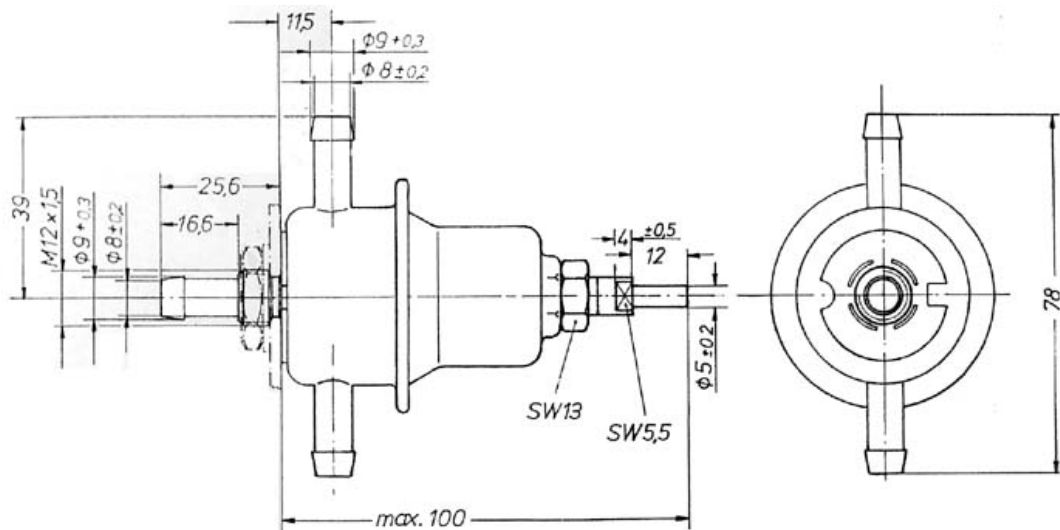
Supply	8 mm, tube connector
Reflow	8 mm, tube connector
Reflow quantity	min. 15 l/h, max. 220 l/h

Order number

	B 280 500 139
Offer drawing	A 280 500 104

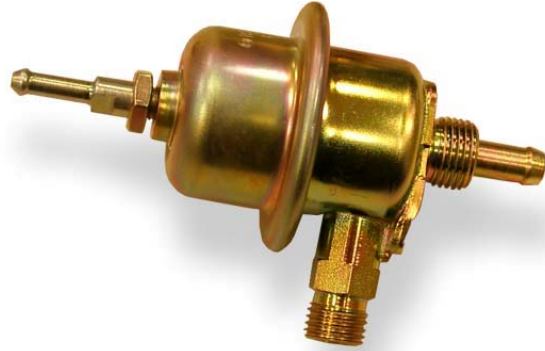
Description

Sheet steel housing with manifold connection



Fuel Pressure Regulator 15-50

Pressure range: 1,5 ... 5 bar



Mechanical data

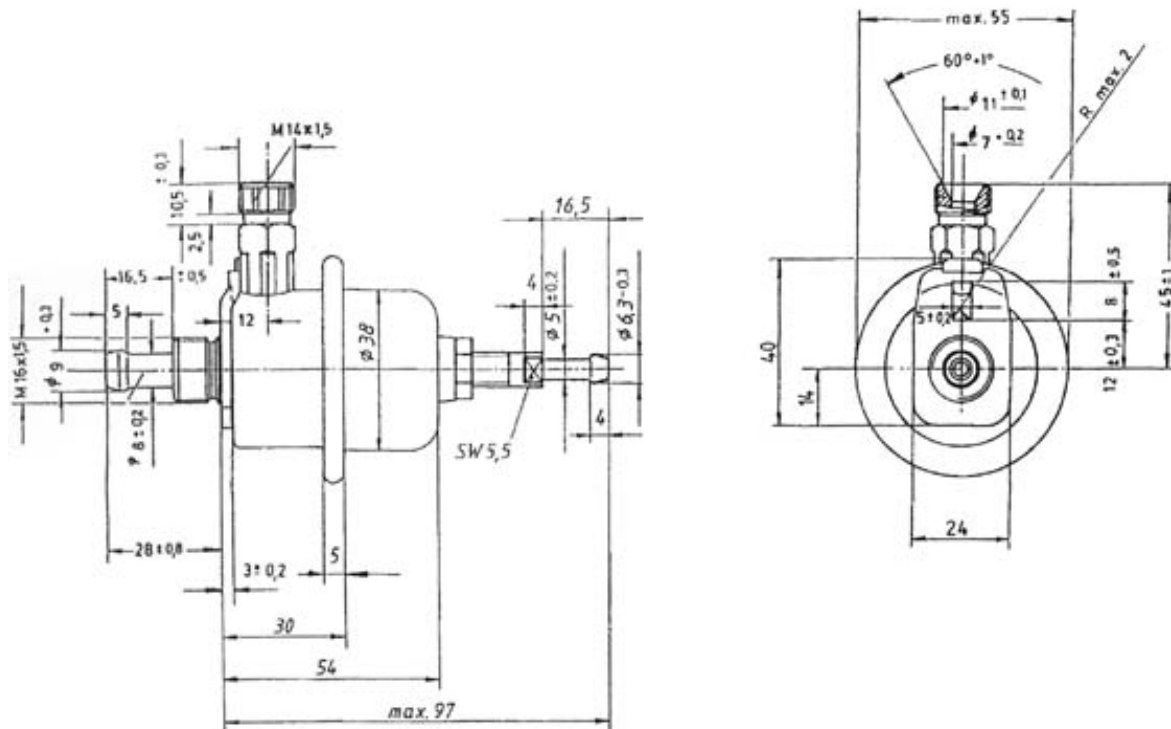
Supply	8 mm, O-ring
Reflow	M14 x 1,5
Reflow quantity	min. 15 l/h, max. 220 l/h

Order number

	B 280 500 743
Offer drawing	A 280 500 743

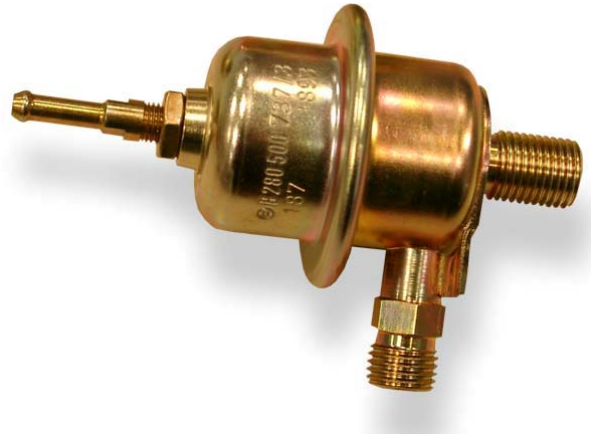
Description

Sheet steel housing with manifold connection



Fuel Pressure Regulator 19-50

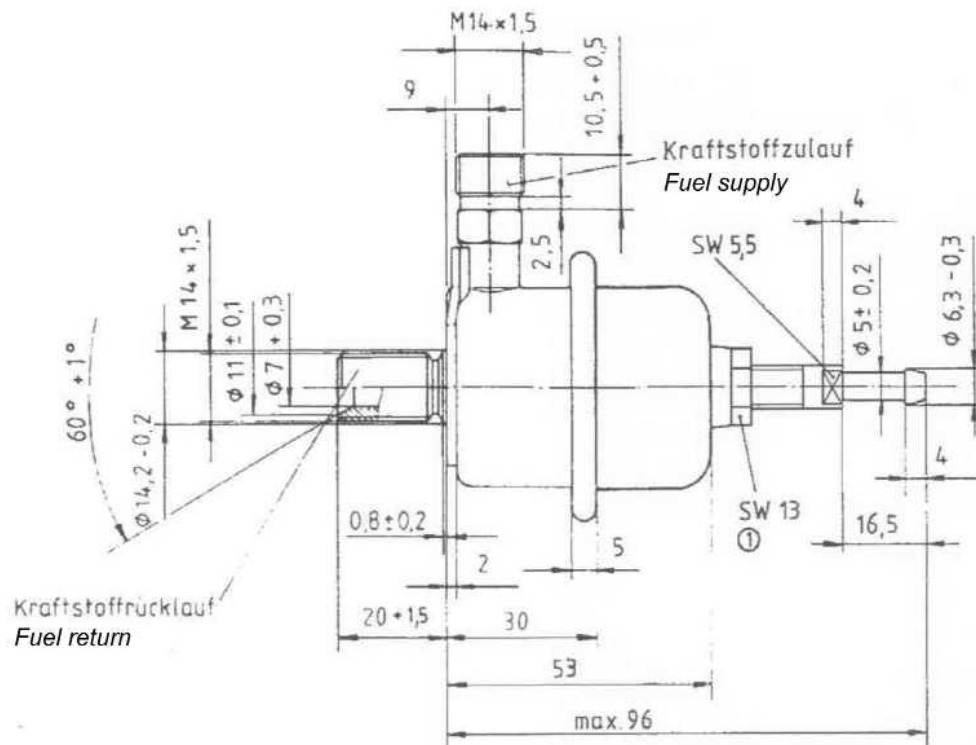
Pressure range: 1,9 ... 5 bar



Mechanical data	
Supply	M14 x 1,5
Reflow	M14 x 1,5
Reflow quantity	min. 15 l/h, max. 220 l/h

Order number	
	B 280 500 737
Offer drawing	A 280 500 662

Description
Sheet steel housing with manifold connection



Fuel Pressure Regulator 14 x 60

Pressure range: 1,4 ... 5 bar/3,2 ... 6 bar



Mechanical data

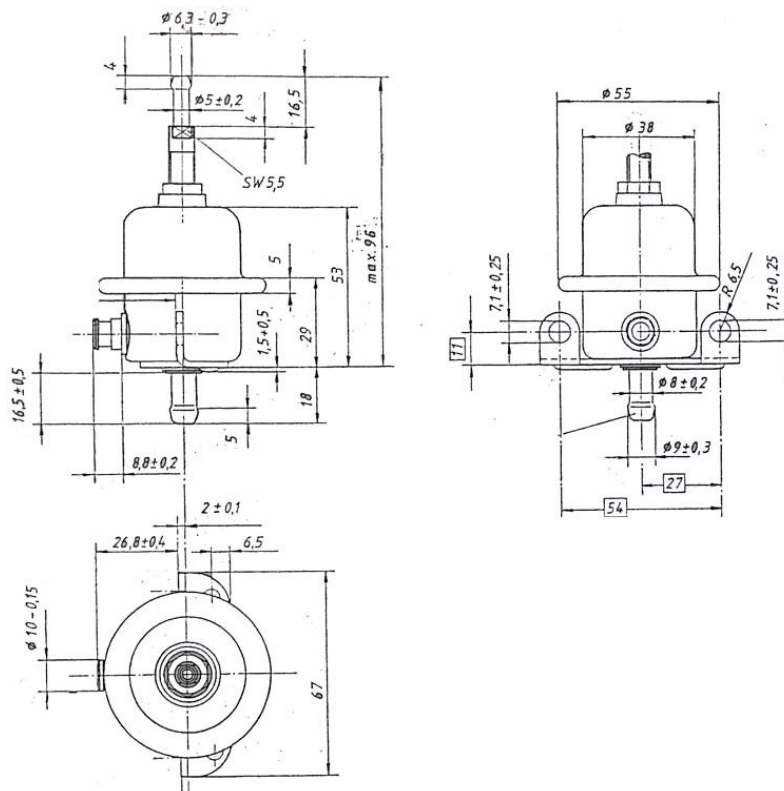
Supply	10 mm, O-ring
Reflow	8 mm, tube connector
Reflow quantity	min. 15 l/h, max. 220 l/h

Order numbers

1,4 ... 5 bar	B 280 500 701
3,2 ... 6 bar	B 280 500 581
Offer drawing	A 280 500 581

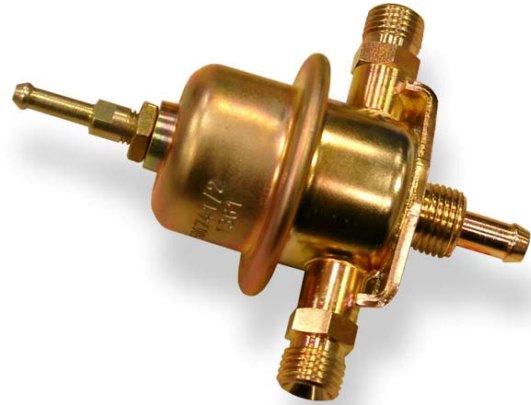
Description

Sheet steel housing with manifold connection



Fuel Pressure Regulator 20x120

Pressure ranges: 2 ... 5 bar/ 3 ... 6 bar/ 4,5 ... 12 bar



Mechanical data

Supply	2 x M14 x 1,5
Reflow	8 mm, tube connector
Reflow quantity	min. 15 l/h, max. 220 l/h

Order numbers

2 ... 5 bar	B 280 500 741
3 ... 6 bar	B 280 500 714
4,5 ... 12 bar	B 280 500 566
Offer drawing	A 280 500 714

Description

Sheet steel housing with manifold connection

