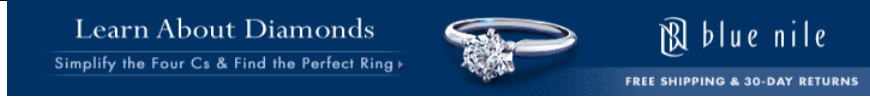




MY ACCOUNT | GALLERY | CLASSIFIEDS | VW/AUDI NEWS | NEW POSTS | SEARCH | PRIVATE MESSAGES



Dubnet Volkswagen Enthusiast Forum > Volkswagen And Audi > Volkswagen Technical Discussion > Technical > How-To's
Super how to Mod your Vr6 intake manifold/Polish and paint.
User Name: User Name [Rem]
Password: [Log in]

How-To's Discuss any modification How-To's in here. Engine Swaps? Brake light modifications? This is the place.

Post Reply

Thread Tools Search this Thread Displa

03-23-2006



jettadude OFF
Moderator
Forum Elder - 2 Stars

Join Date: Mar 21
Location: PA USA
Posts: 1,314
Thanks: 0
Thanked 0 Times

Super how to Mod your Vr6 intake manifold/Polish and paint.

Ok people over the past 3 days ive been working at my new intake manifold that i got for my vr. I was looking online and i found a modded intake man 900bucks. to turn your obd2 into a 2.9 euro obd1 intake with no bottle neck. from what ive read a 22% increase in air volume in the intake manifold. so this and said hell i can do that. ive been wanting to anyhow so i venture online to find a how to. i searched vortex and googled it and nothing. just peo talking about it but no how to. so i took it upon myself to make one. I also wanted to polish it so there a how to do it quickly in here as well. so here it i

1. Get an intake manifold. Just so happens the one i bought was allready powercoated and had polished runners however they were done very badly so go back over them.





2. take a framing square and line up where the 2 ends of the intake walls are and draw a line to follow to cut. as shown here.



3. Start cutting. now i used my die grinder with a cutoff wheel to do it. smaller for more presice cuts and i can adujst the speed. Now when cutting alun you don't want to have it spinning fast. it is a soft metal with a low melting temp. it will not cut as fast and kill your cutoff wheel faster. after you have lines cut like so...



you want to cut along the top of the bottle neck to meet the 2 lines you allready cut. so you can remove the peice like so..



and remove the piece ...



piece ...



4. now with that big peice out of the way i used my angle grinder with a big thick grinding wheel. since i didn't want to try to cut out those walls for laci better term and trust me i tried it is easier to grind them out. Now this will kick up alot of metal dusk wear a dust mask!!! its not just dust its friggin me grind them down as close to the bottom as you can. be careful not to go to deep then you have to JB weld/fill in weld. and it will screw up you polishing part. once you have it all grinded out like so...





so...





you can go back in with sand paper and try to smooth it out. honestly im not i got close and some turbulence is good for the fuel mixture.  
5. now i don't have any pics for this part becuase i have no cut the aluminum yet as the pait is still drying and well you really don't need pics for this bu add them when i do it. to finish it you cut a peice of aluminum the thickness i have not gotten yet ide say 16th might be 2 thin i migh go with 8th inch. y to the shape of the intake manifold so it will sit on top of the edges and weld it in. that will no stop it from sitting higher don't worry. then. clean it out t sure you got all the dust and debree out and bolt on HP!.

---

Now for the polishing.

I didn't have much time to spend on this cuz im in a rush to install it. so i took 150 grit paper. took me about 5 sheets to get the whole thing. and i use sander to get the brunt of it. now sand like the wind. since it is a cast peice there is a texture from the sand, that has to be sanded down smooth before can polsih it to make it look good. use the 150 grit to take it down so you don't see any more ripples. then take some by hand and pick a direction. just wether it be top to bottom or side to side and sand in that one directiong. make all the scraches uniform. when thats done you can see better if there ai more inperfectoins. if not this is what it should look like.....



like....



allready not that bad huh.

now i took 220 grit and in the same direction. if you try to switch directions to get them out it wont work. 220 will take forever and it will wont look right go in the same direction it will blend everything in make it look good. it will also take out the deep scratches. Then i took some 400 grit and again same direction untill all the deep scratches are out . with each higher grit you want to take the scratches out from the previous grit. then i took 600 and finishe you want you can go higher. 800-1000 to get a higher luster as i said i am under a time contrait so 600 was good enough for me. Then i used a polish flitz. i live by this stuff i sugest you use it. a little bit goes a LONG way.



after that this is what i got.



just to show i held a can of liquid wrench up to it just to show its a mirror finish in under an hour.



. Thats for that part. now on to the runners. pretty much repeat the steps. but dont go too far off the runners. a polished surface make the paint harder to. these are the runners when i was done with them . look at the difference to when i got the manifold.







and when i got it.



Now when you want to paint it, you need to mask off all your hard work. i used electrical tape. its thin so you can mask like your pin striping. its tough something hits it or bumps into it the tape will protect it. and i paid a dollar for 2 rolls that i used half of one to tape everything i needed to.



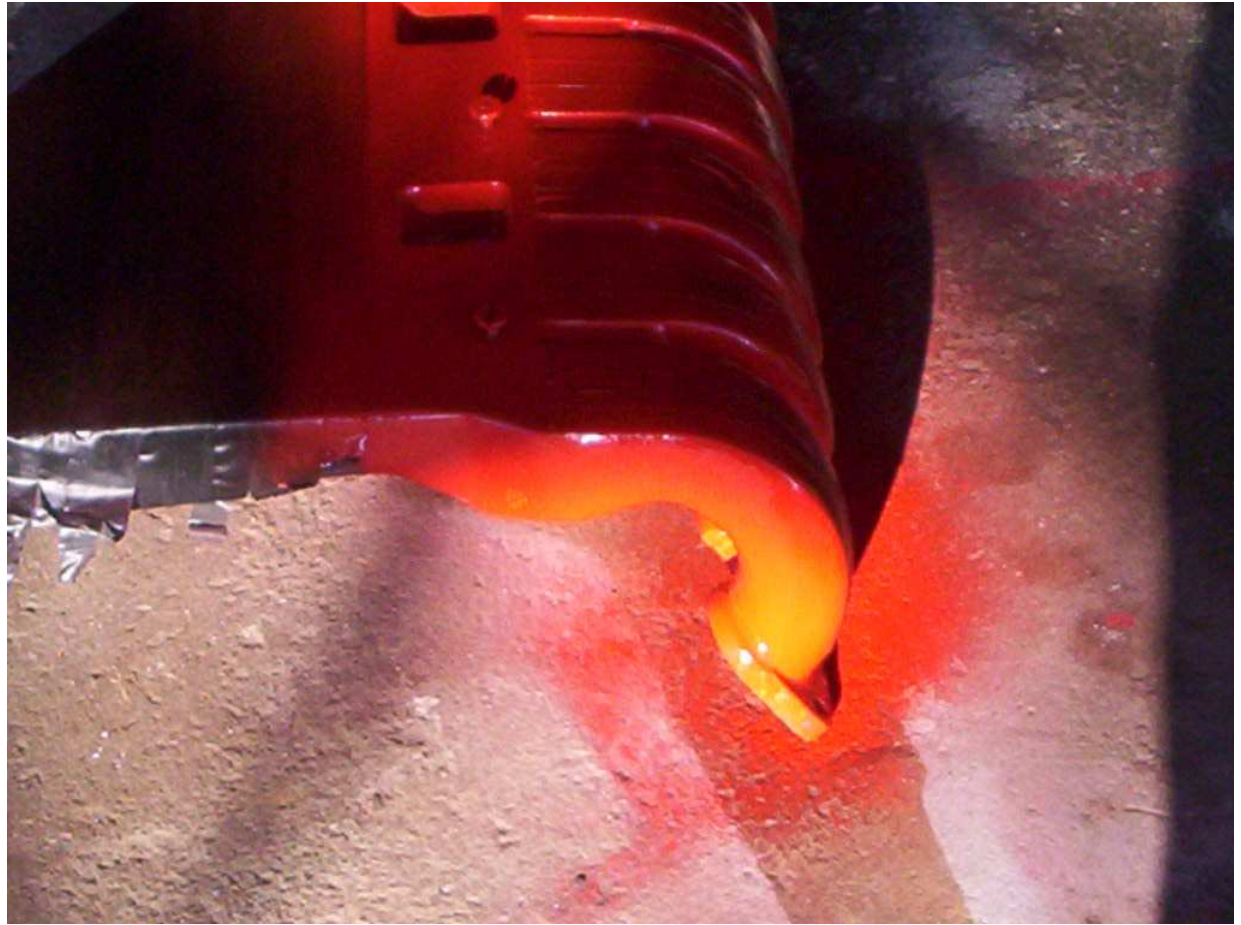


now that its taped off. clean the surface really good. i used carb cleaner to get everything. let dry then find a nice place to paint. somewhere with good ventalation and where no dust will fall on it. i used engine enamel with 500 degree protection. its a hard paint and it wont get messed up by the heat.



Then start spraying. they say to do all your coats in 10 minuet intervults and do it all within one hour. i did 4 coats. nice and thick and nice and bright.











as i said im not quite done i need to paint the under side and weld in the new back but i had to post this i was excited. so there you have it. a how to m vr6 intake manifold. hopefully that will help with anything you might need to polish as well. well tell me what ya think. total time 6 hours over 3 days. 3 in parts. 50 for intake manifold. 80bucks for a grand worth of parts from someone else.

copyright me and dubnetworks.net do not repost anywhere else but dubnet without my permission. email at [jettadude@dubnetworks.net](mailto:jettadude@dubnetworks.net)

I wish my lawn were emo...

Then it would cut itself  
I am the Dude!  
1996 Jetta VR6  
<http://www.cardomain.com/id/jettadude17>

03-24-2006



**GoodDayForADrive** OFF  
Moderator  
Forum Elder - 3 Stars

Join Date: Apr 20  
Location: Roswel  
Posts: 1,448  
Thanks: 0  
Thanked 0 Times

I saw that mani on the vortex actually, you're definitely improving it 😊 good job!

1991 Corrado G60 Lysholm  
2003 Yamaha YZF-R6

03-26-2006



**jettadude** OFF  
Moderator  
Forum Elder - 2 Stars

Join Date: Mar 21  
Location: PA USA  
Posts: 1,314  
Thanks: 0  
Thanked 0 Times

well i thought this would get more responce but anyways here is the finished paint.











I wish my lawn were emo...

Then it would cut itself  
I am the Dude!

1996 Jetta VR6

<http://www.cardomain.com/id/jettadude17>

03-26-2006

**TisforTurbo** OFF  
Senior Member  
3 Star Contributor

looks good 😊



Join Date: Sep 2  
Location: Salt La  
Posts: 251  
Thanks: 0  
Thanked 0 Times  
👤 👤

03-29-2006

**Gotturbo** OFF  
Senior Member  
5 Star Contributor

Join Date: Mar 2  
Location: Payson  
Posts: 727  
Thanks: 0  
Thanked 0 Times  
👤 🙌