

quattro GmbH



RS4 Avant quattro



POWER

Power, $F = m \times a$

Expression of the rate at which work is done or energy is emitted or transferred.

Making a very powerful car is not difficult. Designing one that makes every moment behind the wheel one to savour is a more challenging goal, and one achieved by only a handful of the best sporting cars in the world.

It takes a special strategy to find a perfect match of engine, chassis, suspension, gearbox and braking system – the 'package' in motorsport speak.

The Audi RS4 Avant quattro boasts an enviable package developed with the combined knowledge base of Audi motorsport, the Audi quattro division and Audi's UK subsidiary Cosworth Technology.

The result is a car with exceptional capabilities that will be built in limited numbers and like its predecessor, the Audi RS2, experienced by only a few discerning drivers.





Form and function. Still unmistakably cool Audi design. Still distinctive Avant style, but with added purpose. Lowered, widened, a new front valance with extra air intakes to feed twin turbochargers, 18 inch wheels to house the larger brakes and a revised tail for extra aerodynamic downforce.





Engine output kW

Torque Nm



Acceleration, m/s².

The rate of change in velocity with respect to time.

... 300-hp V6 bi-turbo engine generating 440 Newton metres of torque coupled to a six-speed
... ratio gearbox guarantees spectacular acceleration. Wide, low profile 255/35 tyres on 8.5 inch
... aluminium rims and quattro permanent four-wheel drive give the grip to enjoy it to the full.
... paper few cars in the world can match acceleration from 0-62 mph in just 4.9 seconds and
... 125 mph in 17 seconds (where legally permitted). On the road it makes for an experience that
... the Audi RS4 Avant quattro firmly in the super car league.

ACCELERATION



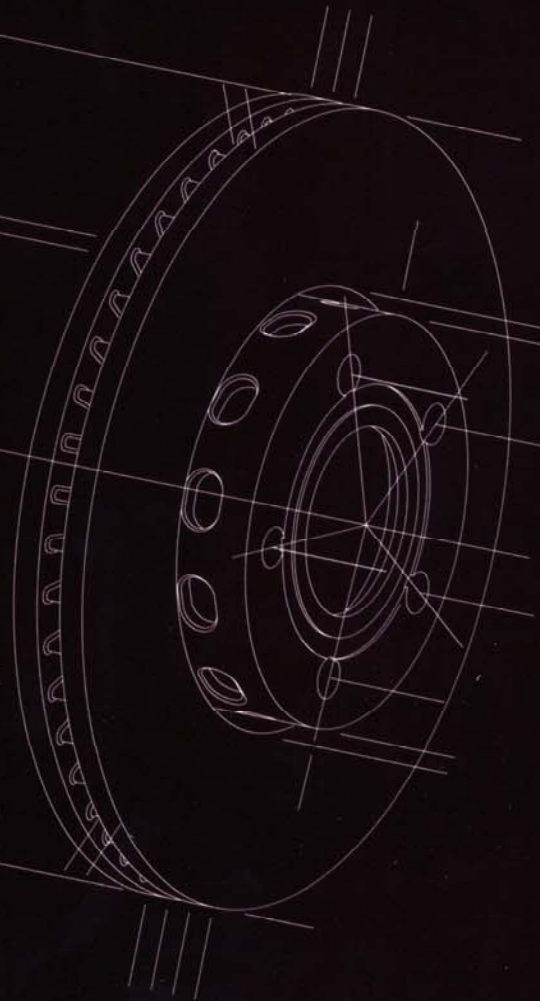
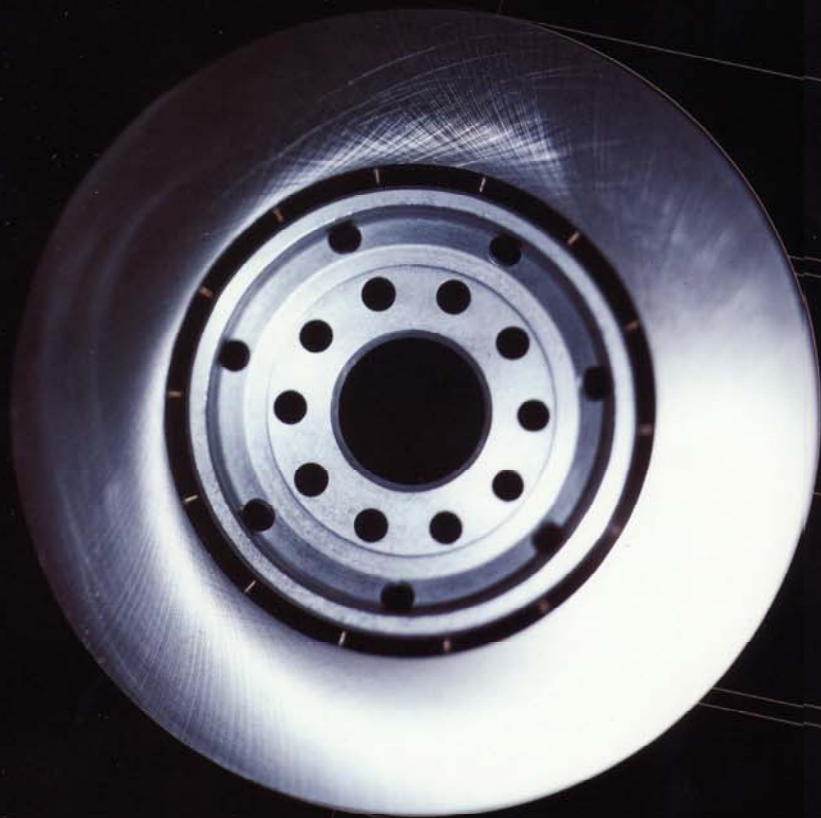




REACTION

The force that a body, itself subjected to a force, exerts in the opposite direction.

The Audi RS4 Avant quattro is equipped with a specially engineered high performance braking system. To ensure that the discs remain stable even under very high temperatures and extreme loads the engineers specified composite brake discs developed directly from the Audi motorsport programme. 360 mm ventilated front discs with dual piston floating calipers and 312 mm ventilated discs at the rear ensure that the RS4 Avant quattro stops every bit as well as it goes.



The background of the advertisement features a dark, high-contrast image of the Audi V6 bi-turbo engine. The Audi logo (four interlocking rings) and the 'V6 bi-turbo' text are prominently displayed in the upper center. Below the logo, a detailed white wireframe diagram of the engine is shown, highlighting its complex internal components and turbochargers. The overall aesthetic is technical and sophisticated, with a focus on the mechanical details of the engine.

DYNAMICS

Study of the influence of forces on motion.

At the heart of the Audi RS4 Avant quattro is a truly remarkable engine. Based on the 2.7 litre V6 bi-turbo of the Audi S4 quattro – itself a powerful and rapid high performance car – the version for the RS4 Avant quattro produces 380 bhp (280 kW) at 6500 rpm. The power increase of nearly 50% has been achieved with a special cylinder head developed and produced in conjunction with Audi's UK subsidiary Cosworth Technology. Additional technical refinements include bigger turbochargers running at higher boost pressure and larger capacity intercoolers.

All the features of an advanced high performance engine - separate turbochargers for each bank of cylinders, five-valve cylinder heads, variable valve timing, hydraulic camshafts, dual ignition coils and the latest Motronic ME7 engine management.



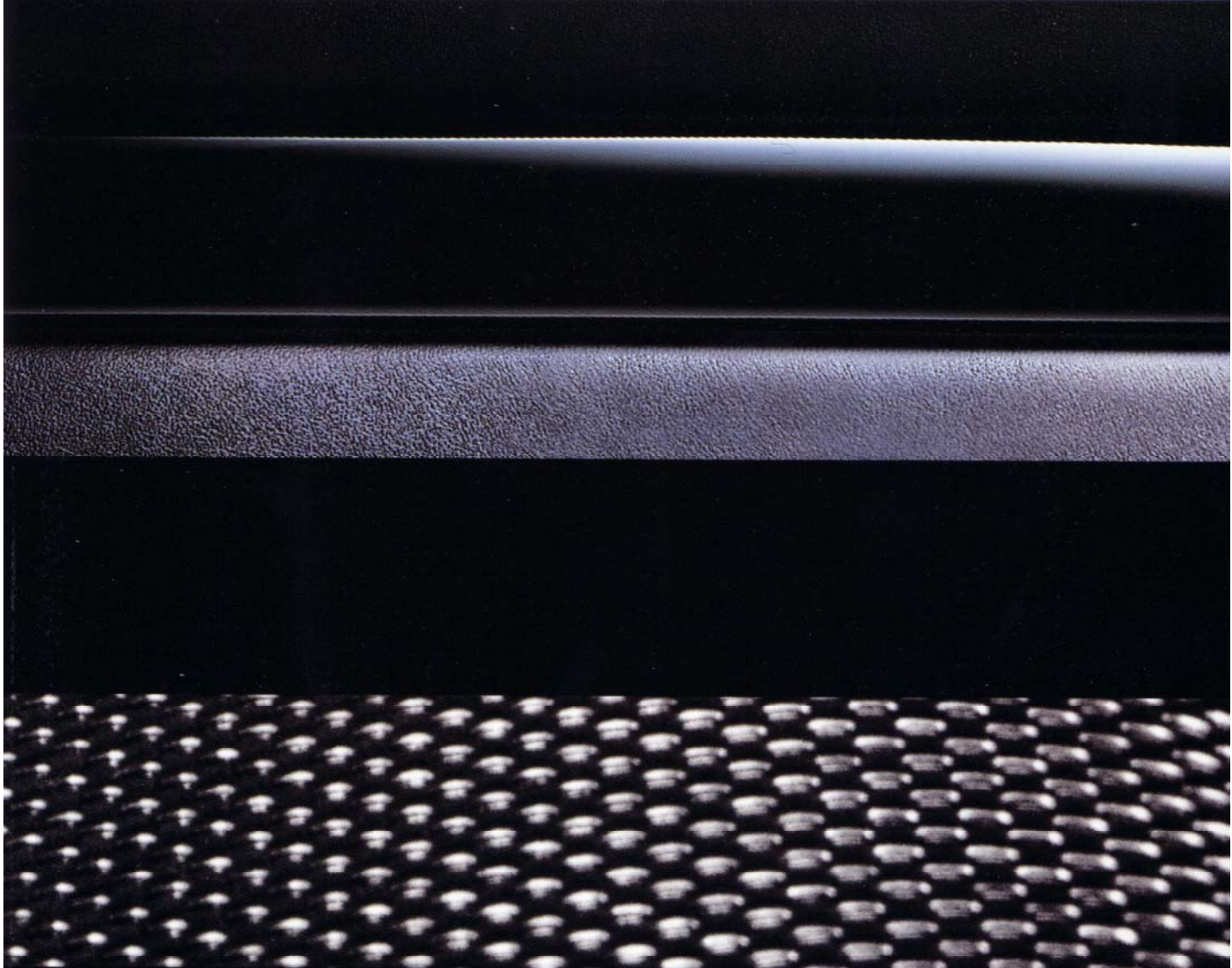


RS 4

D HN UT 620

Model shown is fitted with optional front centre arm rest.





The Audi RS4 Avant quattro is a unique car. A specialist high performance driving machine that is also a stylish Avant with all the practical appeal of five seats and a five door estate. It is also equipped with all the comforts and safety systems expected in a car of this class.

Safety features include driver and front passenger airbags, front seat side airbags and the option of the Audi SIDEGUARD head airbag system.

A high quality audio system with BOSE sound, electronic climate control, heated front seats, anti-theft system and remote door locking are among the extensive items of standard equipment.

Recaro sports seats upholstered in high quality leather as standard, a sports steering wheel and gearstick knob in perforated leather, and either carbon fibre or black piano varnish centre console, instrument panel and door inlays are distinctive interior touches that underline the exclusive character of the RS4 Avant quattro.

Colours and upholstery



Avus Silver, pearl effect C2



Misano Red, pearl effect N9



Nogaro Blue, pearl effect M8



Goodwood Green, pearl effect 6T



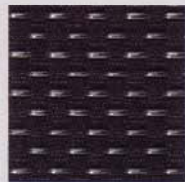
Brilliant Black A2



Imola Yellow 1T



Silk Nappa Leather Silver QS



Pearl Nappa Leather Fabric High Tech RS4-Black/Onyx QR



Valcona Leather Onyx QR

Dashboard inlays



Carbon Fibre 5TU



Piano Varnish Black 5TL

Standard equipment

Airbags, 'full size', for driver and front passenger

Aluminium trim, for side windows, anodised

Anti-lock Braking System (ABS) with Electronic Brake force Distribution (EBD)

Anti-theft alarm system, including ultra-sonic interior monitoring, monitoring of engine and luggage compartments, interior, doors and radio

Audio system

'Symphony' radio system with capacity to store 48 radio preset stations, RDS, integrated single CD player and cassette function

BOSE sound system: 6 high performance loudspeakers, a woofer reflex box and 5 amplifiers producing a total output of 170 watts

Brake system: ventilated disc brakes front and rear, double piston callipers at the front, single at the rear

Bumpers, with integrated fog lights

Cruise control, electronically holds any desired speed (above 25 mph) constantly – until you brake, accelerate or switch off the system

Decorative inlays for the instrument panel, doors and the center console in carbon fibre or piano varnish

Driver's Information System (DIS), digital display for AutoCheck, on-board computer, radio frequencies, external temperature, speed warning, doors and tailgate not fully closed, service intervals and oil pressure

Electric windows, front and rear

Electronic climate control, CFC-free, regulated according to sun's intensity

Electronic Differential Lock (EDL) – traction control

Entry strips in aluminium on all doors, with RS4 inscription

Exhaust tailpipes, twin oval

Exterior mirrors: aluminium housings, heated and electrically adjustable

Front and rear footmats

Front passenger airbag deactivation switch, allows the use of a child's seat on the front passenger seat

Headlight washers, high pressure water system to maintain maximum headlight performance

Head restraints, for all seats

Heated front seats, individually adjustable for the driver and front seat passenger

Heated windscreen washer nozzles and door locks

Instrumentation, specific to RS4

Leather gear knob and gaiter

Leather trimming on door covering, arm rests and door close grips

Manual gearbox, 6-speed, fully synchronised

Model inscription: RS emblem on tailgate, radiator grille, sports steering wheel and on the face of the speedometer

Net partition between luggage and passenger areas

Rear armrest

Rear roof spoiler, colour-keyed

Roof aerial

Roof rails, anodised aluminium

Safety steering column, with maintenance-free rack-and-pinion steering

Standard equipment

Seats:

Recaro sports seats: front seats with accentuated lateral support, electrically adjustable height, reach and lumbar support, manually operated fore and aft adjustment

Split folding rear seats (1/3, 2/3 or completely)

Side airbags for the driver and front seat passenger, integrated into the seat backs

Side rubbing strips painted in vehicle colour

Sports leather steering wheel

Sports suspension, lowered 20cm, with improved direct road contact and sports handling

Sunvisors, folding and swivelling, on driver and front passenger's side with illuminated vanity mirror, third folding sunvisor above rear view mirror

Through-load facility, for practical and secure stowing of long items

Transponder immobiliser, electronic: automatically activated by vehicle key

Upholstery: seat coverings in leather or leather/fabric combination

Wheels:

Four aluminium alloy wheels 8.5 J x 18, 'nine spoke' design, 255/35 ZR18 tyres, including locking wheel bolts

Tyre filling bottle with compressor

Xenon headlights for a bright and even illumination of the road ahead, including headlight washers and automatic range adjustment

Optional equipment (please consult your Audi Centre for prices)

Alcantara pack: steering wheel and gear knob covered in Alcantara

Audio systems

Cassette storage for 4 cassettes, in centre console storage compartment between front seats

CD autochanger for 6 CDs, in luggage compartment

Automatic dipping rear view mirror

Black optic package: roofrails, ornamental vignettes on roof and window cavity anodised in quartz

Brushed matt aluminium or piano varnish inlays to door cappings and dashboard

Colour keyed door mirrors

Front centre armrest

ISOFIX child seat preparation

Load securing net

Satellite navigation system, arrow display in instrument panel plus audio announcements

Satellite navigation system Plus, as satellite navigation system plus a 5" monitor, with map display and integrated television reception module including videotext and a radio receiver (can be combined with a 6 CD autochanger)

SIDEGUARD head airbag system, protects front and rear passengers

Slide and tilt sunroof, electric, tinted single-pane safety glass

Technical data

Engine/electrics

RS4 Avant quattro

Engine type	V6, spark ignition, 5-valve technology, 2 lightweight cylinder heads, three inlet valves, sodium cooled, each with two overhead camshafts (DOHC)
Displacement, cm ³	2671
Max. output, bhp (kW) at rpm	380 (280)/6500
Max. torque, Nm at rpm	440/2500-6000
Engine management	Two turbochargers, fully electronic, sequential multi-point fuel injection with air volume metering, Characteristic-controlled ignition with static high voltage distribution, camshaft adjustment, selective exhaust temperature control, co-ordinated engine torque control
Emission control system	Two air-gap insulated manifolds, two upstream catalyst units located near the engine, two main underfloor catalyst units, selective Lambda control with two heated Lambda sensors

Driveline

Type	Permanent four-wheel drive, Torsen centre differential with automatic lock, Electronic Differential Lock (EDL) with brakes applied at all driven wheels
Clutch	Hydraulically-operated single dry plate clutch with asbestos-free linings. Dual-mass flywheel
Gearbox	6-speed manual, synchromesh on all ratios including reverse

Suspension/steering

Front axle	Independent four-link suspension with virtual steering axis, tubular anti-roll bar, double-tube gas-filled shock absorbers, coil springs, re-bounce stop spring, guide arm with hydraulic damping bearing
Rear axle	Double wishbone rear axle with anti-roll bar
Brake system	Dual-circuit brake system with diagonal split, Anti-lock Brake System (ABS) with Electronic Brake-force Distribution (EBD), brake servo, internally ventilated discs front and rear with two-piston high-efficiency brakes
Wheels	8.5J x 18 light alloy 'nine-spoke' design wheels
Tyres	255/35 ZR18
Steering	Power-assisted, maintenance-free rack and pinion, track-stabilising steering roll radius, turning circle approximately 11.4 metres

Weights/volumes

Unladen weight ¹	kg	1620
Gross weight limit	kg	2170
Roof load limit/nose weight	kg	75
Luggage compartment capacity ²	l	390/1250
Tank capacity	approx. l	62

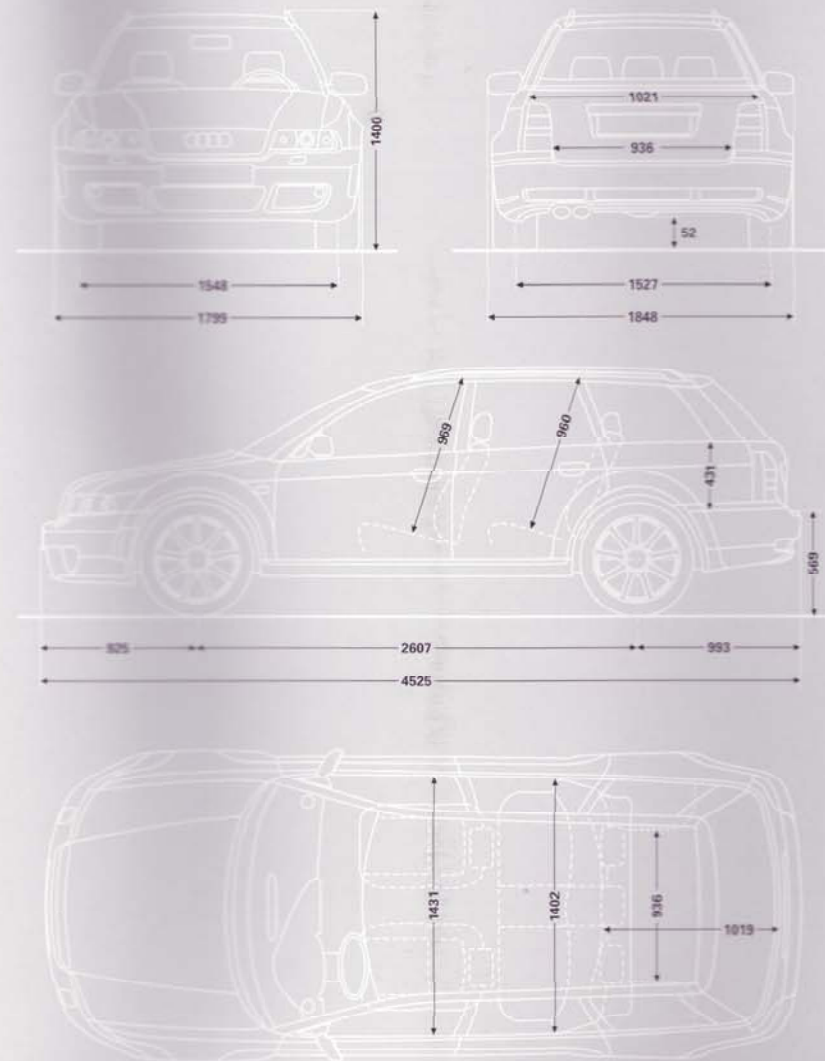
Performance data/fuel consumption

Top speed	mph	155 (electronically limited)
Acceleration 0-62 mph	in secs	4.9
Fuel grade		Premium unleaded 95/98 RON ³
Fuel consumption according to 93/116/EU in mpg ⁴		
- urban		16.6
- extra urban		31.2
- combined		23.5
according to 93/116/EU in l/100 km ⁴		
- urban		17.0
- extra urban		9.0
- combined		12.0
CO ₂ emissions	g/km	288

Notes:

- Through extras the unladen weight and drag coefficient figure for the vehicle can increase, possibly affecting the payload and top speed.
- Measured according to VDA method, using 200 x 100 x 50 mm blocks.
- The use of Super Plus unleaded fuel with an octane number of 98 RON is recommended. 95 RON can be used with a minima reduction in performance and no adverse effects. If neither 98 or 95 RON is available, regular unleaded, at least 91 RON can be used as an emergency measure. Performance data and fuel consumption values in this table have been calculated using Super Plus 19k RON.
- Depending on driving style, road and traffic limitations, environmental factors and vehicle condition, the fuel consumption figures may deviate from those quoted.

Dimensions



Dimensions in millimetres.

The specifications contained in this brochure are for information purposes only, as our products are continually updated and changes may be made to the specifications from time to time. If you require any specific feature you must consult your Audi Centre who is regularly updated with any change in specification. Specifications are subject to change without notice. Photographs in this brochure are for general guidance only. They do not necessarily illustrate the UK specifications of the car. For details of your nearest Audi Centre, please call 0345 699777.

We would like to advise you that telephone calls to Audi Customer Service may be monitored and recorded as part of our training and quality assurance processes. All our monitoring and recording processes meet Ofcom regulations.

The paper in this brochure has been produced from chlorine-free bleached pulp.

AUDI (UK)
Customer Service
PO Box 400
Walsall
WS5 4XX
0345 699777
www.audi.co.uk
Valid from 03.00

Printed in Germany
958/1929.01.25